

90 Series Shell Case

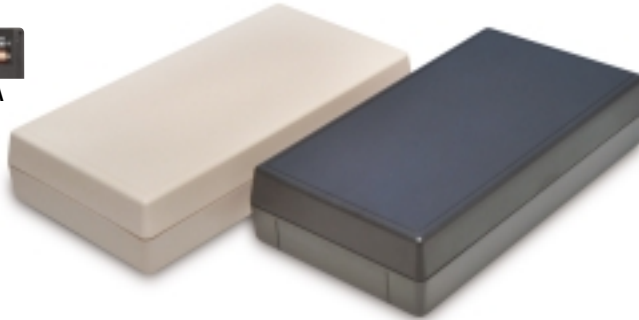
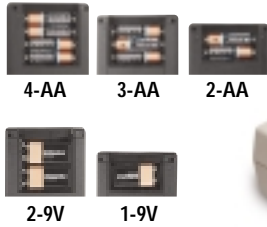
A very versatile shell enclosure with recessed area for membrane keypad.

Battery options include: 2AA, 3AA, 4AA, 1-9V, 2-9V, and no battery.

Additional options: flush top

Battery Options:

- No Battery
- 2 AA cells
- 3 AA cells
- 4 AA cells
- 1 or 2- 9V cells



Color Options:

- PC Bone
- Black
- Custom color matching

Standard Material Options:

- ABS UL 94 VO (fire retardant)
- ABS UL 94 HB standard

Dimension Options:

- (L x W x H)
- 5.7 x 3.6 x 0.8 or 1.20"
- 5.7 x 3.6 x 1.10 or 1.50"
- 5.7 x 3.6 x 1.25 or 1.65"

New!
 LCD window available
 (see page 6 for details)

Case Dimensions	5.7x3.6x0.8"	5.7x3.6x1.2"	5.7x3.6x1.10"	5.7x3.6x1.50"	5.7x3.6x1.25"	5.7x3.6x1.65"
Description	Part No.	Part No.	Part No.	Part No.	Part No.	Part No.
Shell case with NO Battery Compartment	90-41-NO	90-41-NO-E	90-42-NO	90-42-NO-E	90-43-NO	90-43-NO-E
Shell case with 2AA Battery Compartment			90-42-2A	90-42-2A-E	90-43-2A	90-43-2A-E
Shell case with 3AA Battery Compartment			90-42-3A	90-42-3A-E	90-43-3A	90-43-3A-E
Shell case with 4AA Battery Compartment			90-42-4A	90-42-4A-E	90-43-4A	90-43-4A-E
Shell case with 9V Battery Compartment			90-42-9V	90-42-9V-E	90-43-9V	90-43-9V-E
Shell case with 2-9V Battery Compartment			90-42-29V	90-42-29V-E	90-43-29V	90-43-29V-E

Note: for black add BL to part number, for bone add BO to part number

Note: For recessed tops add R

Note: For Flush tops add F

ACCESSORIES

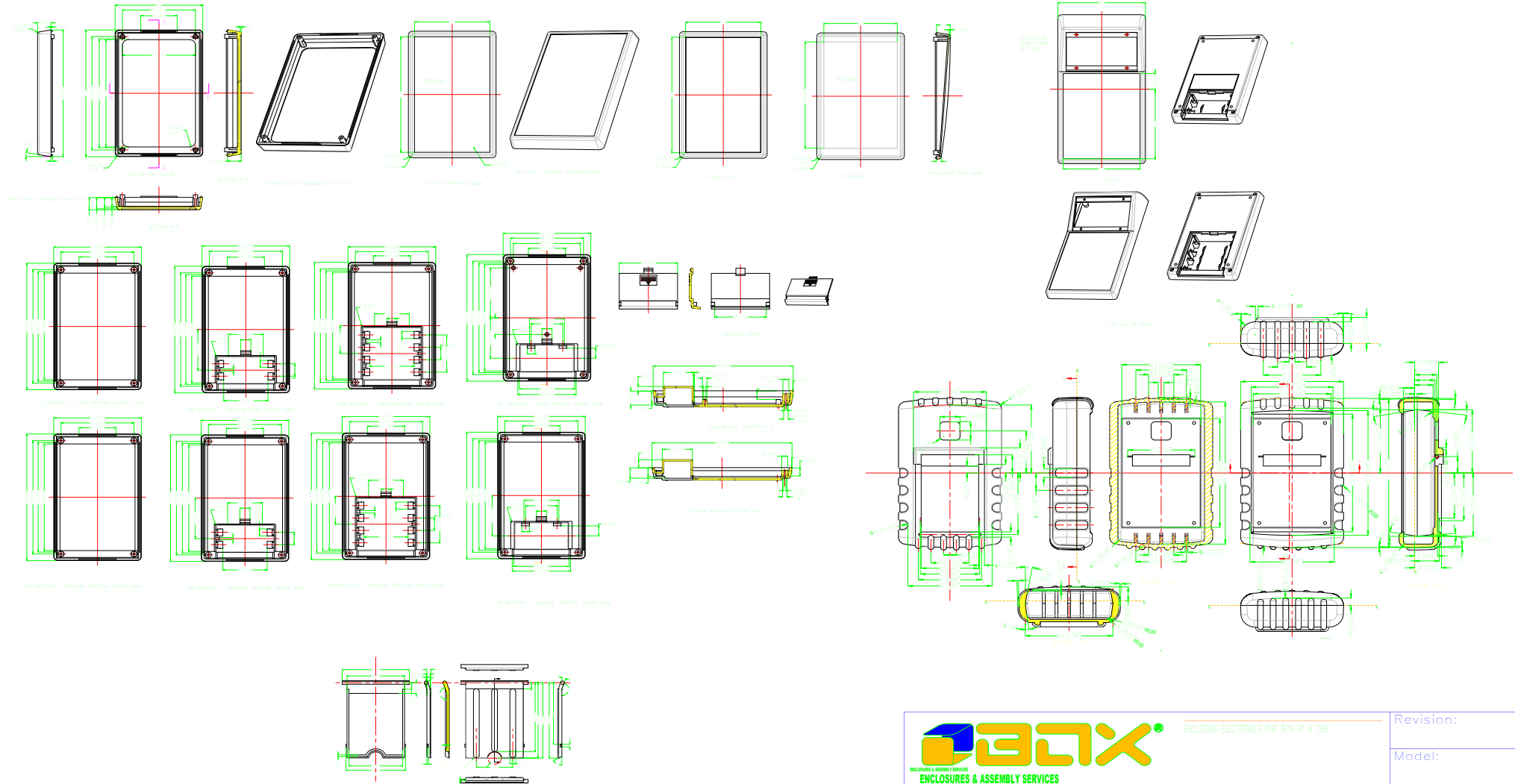
	Light Blue	Dark Blue	Bright Orange	Bright Yellow	Red	Black
Protective Boot w/Integrated tilt bar	Part No.	Part No.	Part No.	Part No.	Part No.	Part No.
	90-RBT-LBL	90-RBT-DBL	90-RBT-ORG	90-RBT-YEL	90-RBT-RED	90-RBT-BLK



	2AA set	3AA set	4AA set	6AA set	9V set
Battery Clip Sets	Part No.	Part No.	Part No.	Part No.	Part No.
	BAT-2A	BAT-3A	BAT-4A	BAT-6A	BAT-9V90

	Bone	Black
Belt Clips	Part No.	Part No.
	CLP-BONE	CLP-BLK

	Black Panel	Bone Panel
Expander Panel	Part No.	Part No.
(increases case height by 0.5 inches)	90-EXPBLK	90-EXPBONE

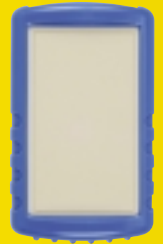




 <p>ENCLOSING ELECTRONICS ONE BOX AT A TIME</p>		Revision:	
		Model:	
Title 90-SERIES		Dwg. No.:	Part No.:
Material:	TOLERANCE all dimension in mm unless otherwise specified.	Color:	Drn. Date Tan zonghaun Apr 10 04
Finish:	x ±0.20 .x ±0.10 .xx ±0.05 ANGLE ±0.5°	Qty:	Chk. Date
Proj. 		A4 Sheet of	App. Date

New for 2004

Featuring eight new product lines with protective rubber boots.



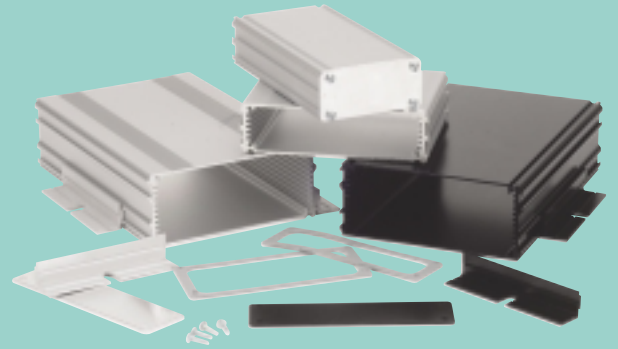
1



NEMA 4 / IP65 Enclosures



Extruded Aluminum



Protective Boots

NEW!



LCD Enclosures

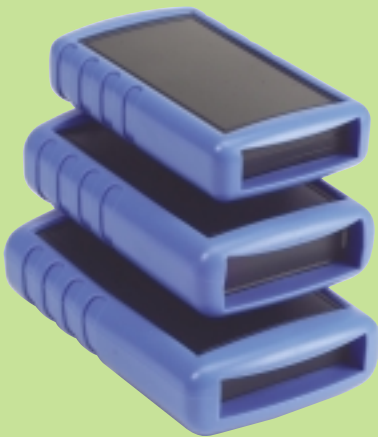


ENCLOSURES & ASSEMBLY SERVICES

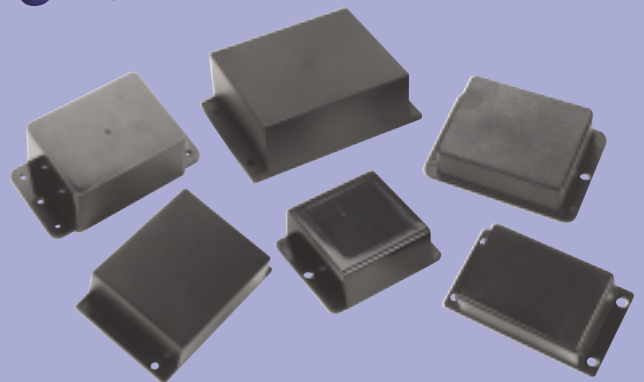
Enclosing electronics one box at a time.



Handheld Enclosures



Flange Cases



See back page for International Distribution Network