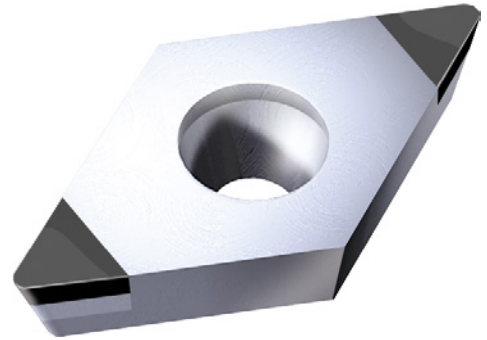


## CBN indexable insert, coated, DCGW

Type of cutting material: ABC25B/F S2

**ATORN**<sup>®</sup>

|  |  |
|--|--|
| <b>Art. No.</b>                                  | <b>17872 222</b>                                 |
| <b>Shape of indexable insert ISO</b>             | D  |
| <b>Clearance angle of indexable insert ISO</b>   | C  |
| <b>Tolerance class of indexable insert ISO</b>   | G  |
| <b>Indexable insert type ISO</b>                 | W  |
| <b>Size of indexable insert ISO</b>              | 07   |
| <b>Thickness of indexable insert ISO</b>         | 02   |
| <b>Corner radius of indexable insert ISO</b>     | 02   |
| <b>ISO name</b>                                  | DCGW 070202                                      |
| <b>Cutting material</b>                          | CBN  |
| <b>Type of cutting material</b>                  | ABC25B/F   |
| <b>ISO-Code Rotating</b>                         | DCGW 070202                                      |
| <b>Machining conditions for indexable insert</b> | Good   |
| <b>Design of the chamfer</b>                     | F (chamfered)                                    |
| <b>Materials group</b>                           | P (primary application), H (primary application) |



### EAN-Code

4050293398779