

15EJT1F ✓ ACTIVE

Corcom | Corcom EJT

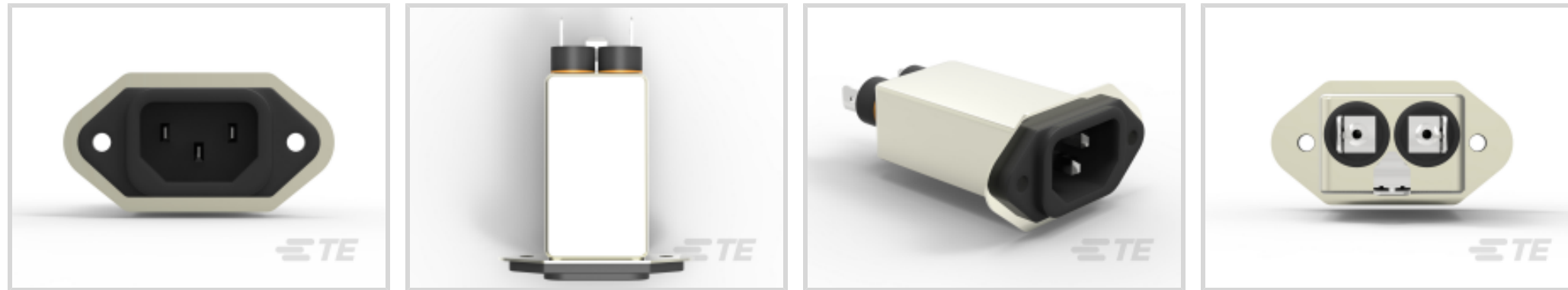
TE Internal #: 4-1609157-4

Corcom EJT, Multi-Function Inlet Filters, Power Line, Vertical, Leakage Current (Max) (120VAC, 60Hz) 250 μ A, 15A Filter Current Rating

[View on TE.com >](#)



EMI Filters > Multi-Function Inlet Filters > CORCOM EJT SERIES IEC FILTERED INLETS



Filter Type: **Power Line**

Mount Angle: **Vertical**

Leakage Current (Max) (120VAC, 60Hz): **250 μ A**

Filter Current Rating: **15 A**

Filter Mount Style: **Extended Flange**

[All CORCOM EJT SERIES IEC FILTERED INLETS \(22\)](#)

Features

Product Type Features

Ground Choke Option	No
Ground Option	None
Filter Type	Power Line
Filter Input Termination Type	IEC
Filter Output Termination Type	.250" FASTON
Filtering Requirements	Filtered
Filter Connector Type	IEC 60320-1 C-14

Electrical Characteristics

Leakage Current (Max) (120VAC, 60Hz)	250 μ A
Filter Current Rating	15 A
Voltage Rating (Max)	250 VAC

Mechanical Attachment

Mount Angle	Vertical
Filter Mount Style	Extended Flange

Product Compliance

[For compliance documentation, visit the product page on TE.com>](#)

EU RoHS Directive 2011/65/EU	Compliant
EU ELV Directive 2000/53/EC	Compliant
China RoHS 2 Directive MIIT Order No 32, 2016	No Restricted Materials Above Threshold
EU REACH Regulation (EC) No. 1907/2006	Current ECHA Candidate List: JAN 2021 (211) Candidate List Declared Against: JUL 2019 (201) SVHC > Threshold: Not Yet Reviewed
Halogen Content	Not Low Halogen - contains Br or Cl > 900 ppm.
Solder Process Capability	Not applicable for solder process capability

Product Compliance Disclaimer

This information is provided based on reasonable inquiry of our suppliers and represents our current actual knowledge based on the information they provided. This information is subject to change. The part numbers that TE has identified as EU RoHS compliant have a maximum concentration of 0.1% by weight in homogenous materials for lead, hexavalent chromium, mercury, PBB, PBDE, DBP, BBP, DEHP, DIBP, and 0.01% for cadmium, or qualify for an exemption to these limits as defined in the Annexes of Directive 2011/65/EU (RoHS2). Finished electrical and electronic equipment products will be CE marked as required by Directive 2011/65/EU. Components may not be CE marked. Additionally, the part numbers that TE has identified as EU ELV compliant have a maximum concentration of 0.1% by weight in homogenous materials for lead, hexavalent chromium, and mercury, and 0.01% for cadmium, or qualify for an exemption to these limits as defined in the Annexes of Directive 2000/53/EC (ELV). Regarding the REACH Regulation, the information TE provides on SVHC in articles for this part number is based on the latest European Chemicals Agency (ECHA) 'Guidance on requirements for substances in articles' posted at this URL: <https://echa.europa.eu/guidance-documents/guidance-on-reach>

Compatible Parts

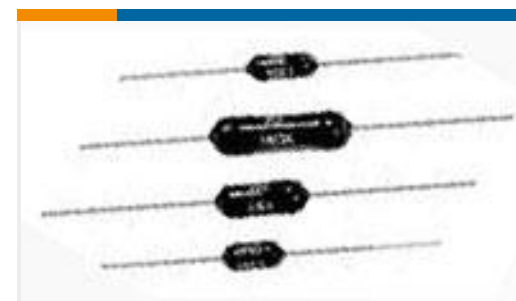


Also in the Series | [Corcom EJT](#)



Multi-Function Inlet Filters(22)

Customers Also Bought

TE Part #1-2291728-1
DYNAMIC 3200 REC AND TAB HSGTE Part #1734366-1
Std USB Type A, VT, T/HTE Part #170823-1
110 FASTON SLEEVE, TAB,
TRANSPARENT, NATTE Part #1217083-1
110 FASTON, PIGGYBACK REC, 22-18
AWG, BRTE Part #1408332-1
QMA STRAIGHT PWB JACKTE Part #103904-1
02 MTE HDR SRRA LATCH W/HLDWNTE Part #1623246-1
CRG0805 1% 51RTE Part #1879666-3
H8 140K 0.1% 15PPMTE Part #YDTS24F25-19PEC001
D38999: Jam Nut, 25-19 Insert,
Electroless Nickel PlatingTE Part #187788N003
SO63-3-00CS2567

Documents

CAD Files

3D PDF

3D

Customer View Model

[ENG_CVM_CVM_4-1609157-4_B.2d_dxf.zip](#)

English

Customer View Model

[ENG_CVM_CVM_4-1609157-4_B.3d_igs.zip](#)



English

Customer View Model

[ENG_CVM_CVM_4-1609157-4_B.3d_stp.zip](#)

English

By downloading the CAD file I accept and agree to the [Terms and Conditions](#) of use.

Datasheets & Catalog Pages

[1654001_CORCOM_PRODUCT_GUIDE](#)

English

[Corcom EJT Flanged Inlet Filter](#)

English

[Corcom Combined Selector Charts](#)

English