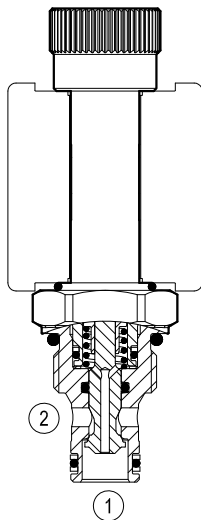


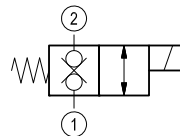
## Solenoid operated valves direct acting poppet 2-way double lock normally closed Common cavity, Size 08

VEDT-08A-A-12.7-NC

OD.11.31.18 - Y - 00



Version 31



### General

Weight	kg (lbs)	0.19 (0.42)
Installation orientation		Optional
Ambient temperature range	°C (°F)	-30 to 60 (-22 to 140)

### Hydraulic

Max. operating pressure	bar (psi)	250 (3600)
Max. flow	l/min.(gpm)	15 (4)
Max. internal leakage	drops/min.	20
Fluid temperature range	°C (°F)	-20 to 80 (-4 to 176)
Response time	ms.	40-60 at nominal flow (oil at 46 cSt)

Fluids Mineral-based or synthetics with lubricating properties at viscosities of 20 to 380 mm<sup>2</sup>/s (cSt)

Installation torque Nm (ft-lbs) 34-41 (25-30)

Recommended degree of fluid contamination Nominal value max. 10µm (NAS 8) ISO 4406 19/17/14

Cavity CA-08A-2N see RE 18325-70

Lines bodies and standard assemblies Please refer to section "Hydraulic integrated circuit" or consult factory

Seal kit code material no. RG08A2010530100 R901101544

Seal kit coil code material no. RG12A1PNBR7010 R934003958

Other technical data See data sheet RE 18350-50

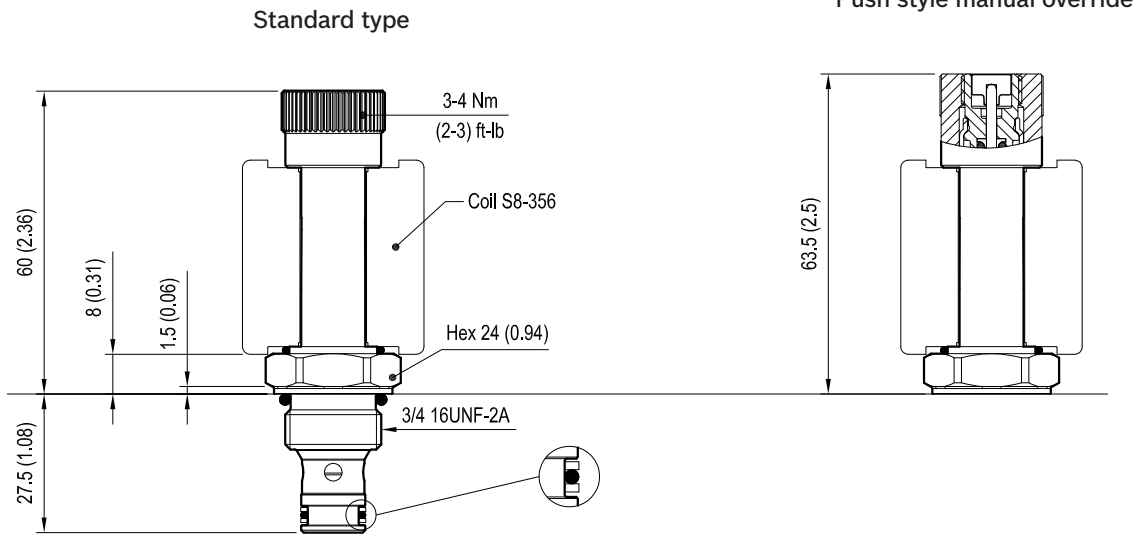
### Electrical

Type of voltage	DC voltage
Coil type	S8-356
Supply voltage	See data sheet RE 18325-90
Nominal voltage	± 10%
Power consumption	W 20
Duty cycle coil	% See performance graphs
Type of protection	See data sheet RE 18325-90

Note: Coils must be ordered separately.

## Dimensions

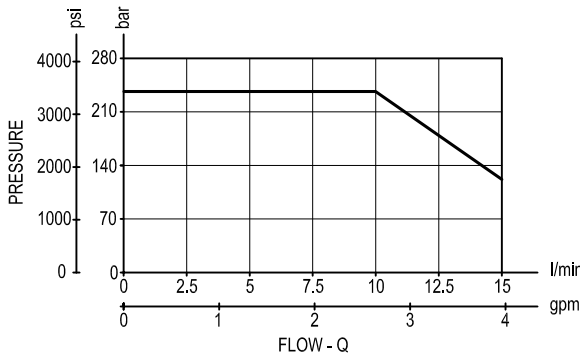
Solenoid operated valves poppet 2-way double lock normally closed



mm (Inches)

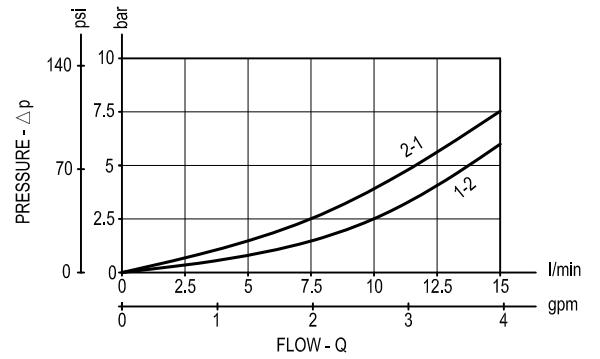
# Performance graphs

Performance limits



version 31

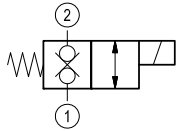
Characteristic curves



### Ordering code

OD.11	*	18	*	00
-------	---	----	---	----

Solenoid operated valves  
poppet 2-way double lock  
normally closed

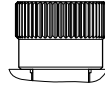


= 31

Common cavity: CA-08A-2N

standard type

2A =



Push style manual override

2B =



Type	Material number	Type	Material number
OD1131182A0000	R934003626		
OD1131182B0000	R934003627		