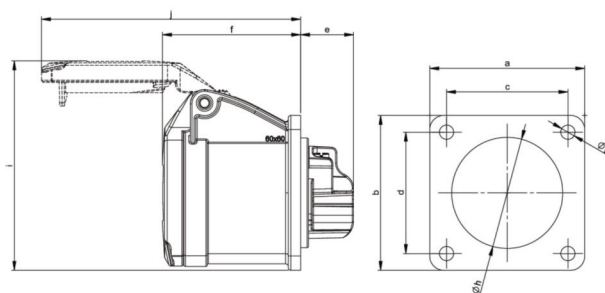


PCE data sheet

article#	313-6f6
article description	CEE-flanged socket straight (60x60mm) 16A 3p 6h IP44/IP54
description long	CEE-flanged socket straight (60x60mm) 16A 3p 6h IP44/IP54 housing material: PA6 rated current: 16A number of poles: 3 (2P+PE) clock-position: 6h rated voltage/frequency: 200-250V~ / 50+60Hz contacts: brass connection technology: screw terminals dimensions (flange/fixing center): 60x60 mm / 47x47 mm IP protection class: IP44/IP54
GTIN (EAN)	9003399043536
country of origin	AT
customs number	85366990
net weight	0.105 kg
packaging quantity	10

ETIM 7.0	EC001317
IEC-amperage	16 A
Voltage acc. EN 60309-2	230 V (50+60 Hz) blue
Number of poles	3
Clock hour position	6
Identification colour	Blue
Degree of protection (IP)	IP54
Connection system	Screwed terminal
Angle of plug	Straight
Material	Plastic
Contact material	CuZn
Surface finish contacts	Untreated
Flange size vertical	60 mm
Drill hole distance vertical	47 mm
Flange size horizontal	60 mm
Drill hole distance horizontal	47 mm

wire flexible	1-2,5 mm ²
wire solid	1-4 mm ²
contact screws	100 Ncm
dismantling length	50 mm
stripping length	10-12 mm



www.manufacturer-safety.info