

- 1
- 2
- 3
- 4
- 5
- 6
- 7
- 8
- 9
- 10
- 11
- 12
- 13
- 14
- 15
- 16
- 17
- 18

MATERIAL

AISI 303 stainless steel.

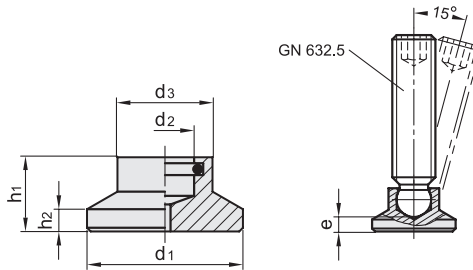
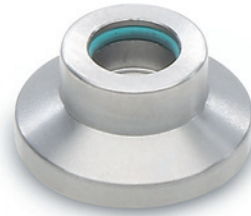
ELASTIC RING

OR rubber FKM type VITON®.

FEATURES AND APPLICATIONS

GN 631.5 thrust pads are used to transmit clamping forces by means of grub screws GN 632.5 (see page 640).

They can be adapted on irregular or non-parallel surfaces and allow the locking preventing the rotating movement of the screw from being exerted directly on the piece to be locked.



Code	Description	d1	d2	d3	h1	h2	e	Set screw GN 632.1/GN 632.5	⚖
GN.12170	GN 631.5-21-4.5	21	4.5	12.8	10	3	6	M6	16
GN.12171	GN 631.5-21-6.1	21	6.1	12.8	10	3	5	M8	16
GN.12172	GN 631.5-21-7.8	21	7.8	12.8	10	3	4.3	M10	14
GN.12173	GN 631.5-21-9.4	21	9.4	12.8	10	3	3.4	M12	13
GN.12175	GN 631.5-25-4.5	25	4.5	13	10.5	3	6.5	M6	22
GN.12176	GN 631.5-25-6.1	25	6.1	13	10.5	3	5.5	M8	20
GN.12177	GN 631.5-25-7.8	25	7.8	13	10.5	3	4.6	M10	20
GN.12178	GN 631.5-25-9.4	25	9.4	13	10.5	3	3.6	M12	39
GN.12180	GN 631.5-32-4.5	32	4.5	14	11	3	7	M6	34
GN.12181	GN 631.5-32-6.1	32	6.1	14	11	3	6	M8	35
GN.12182	GN 631.5-32-7.8	32	7.8	14	11	3	5	M10	33
GN.12183	GN 631.5-32-9.4	32	9.4	14	11	3	4.2	M12	50
GN.12186	GN 631.5-40-6.1	40	6.1	16	13	4	8	M8	67
GN.12187	GN 631.5-40-7.8	40	7.8	16	13	4	7	M10	60
GN.12188	GN 631.5-40-9.4	40	9.4	16	13	4	6.2	M12	65
GN.12191	GN 631.5-50-6.1	50	6.1	16	15.5	4	10.4	M8	116
GN.12192	GN 631.5-50-7.8	50	7.8	16	15.5	4	9.3	M10	115
GN.12193	GN 631.5-50-9.4	50	9.4	16	15.5	4	8.7	M12	114

Standard machine parts