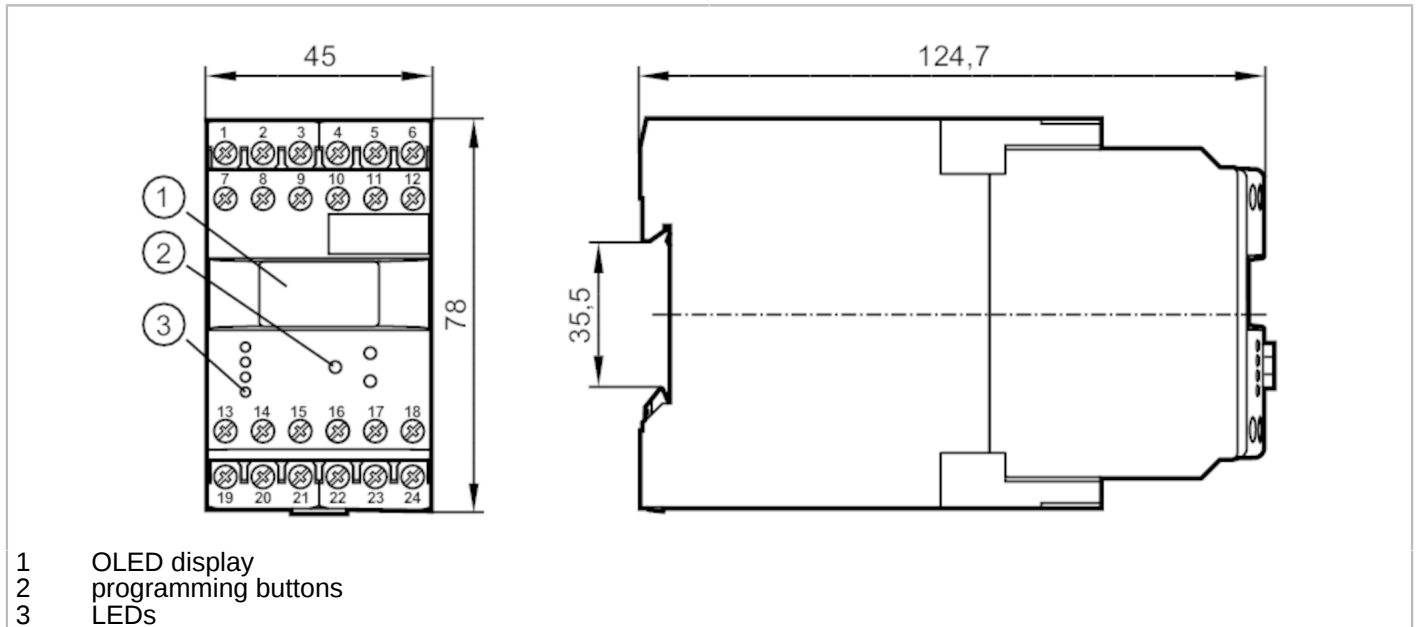


DW2503



Programmable frequency-to-current converter

MONITOR/FA-1 /100-240VAC/DC



- 1 OLED display
- 2 programming buttons
- 3 LEDs



Product characteristics

| | |
|-----------------|-------------------------------|
| Housing | housing for DIN rail mounting |
| Dimensions [mm] | 78 x 45 x 124.7 |

Application

| | |
|-------------|--|
| Application | conversion of pulse sequences into analogue standard signals |
|-------------|--|

Electrical data

| | |
|-------------------------------------|-------------------------------|
| Nominal voltage AC [V] | 110...240 |
| Nominal voltage DC [V] | 27 |
| Nominal voltage tolerance [%] | < 10 |
| Nominal voltage tolerance 2 [%] | 20...10 |
| Nominal frequency AC [Hz] | 50...60 |
| Max. power consumption [VA] | 8 |
| Power consumption [W] | 5 |
| Auxiliary energy for sensors DC [V] | 19.6...27.7; (SELV, ≤ 150 mA) |

Inputs / outputs

| | |
|------------------------------|---|
| Number of inputs and outputs | Number of analogue outputs: 1; Number of relay outputs: 1 |
|------------------------------|---|

Outputs

| | |
|------------------------------|--------|
| Number of relay outputs | 1 |
| Number of analogue outputs | 1 |
| Analogue current output [mA] | 4...20 |
| Analogue voltage output [V] | 0...10 |

Measuring/setting range

| | |
|-------------------------|-----------|
| Setting range Hz [Hz] | 0...10000 |
| Setting range [Imp/min] | 0...60000 |

DW2503



Programmable frequency-to-current converter

MONITOR/FA-1 /100-240VAC/DC

| Operating conditions | | |
|-------------------------------|------------------|---|
| Ambient temperature | [°C] | -40...60 |
| Storage temperature | [°C] | -40...85 |
| Max. relative air humidity | [%] | 80; (40 °C: 50 %) |
| Protection | | IP 50 |
| Protection rating terminals | | IP 20 |
| Tests / approvals | | |
| EMC | EN 61010 | 2011 |
| | EMV 89/336/EWG | |
| | EN 61000-6-2 | 2005 |
| | EN 61000-6-4 | 2007 |
| Mechanical data | | |
| Weight | [g] | 379 |
| Housing | | housing for DIN rail mounting |
| Dimensions | [mm] | 78 x 45 x 124.7 |
| Materials | | plastics |
| Displays / operating elements | | |
| Display | | OLED display, 128 x 64 pixels luminous |
| | switching status | LED, green |
| Remarks | | |
| Remarks | | The unit complies with overvoltage category II; degree of soiling 2 |



Programmable frequency-to-current converter

MONITOR/FA-1 /100-240VAC/DC

Electrical connection

dual-chamber terminals: 2 x ...2.5 mm²; AWG 14

| | |
|----|--------------------------------|
| 1 | 24 V DC supply voltage (L-) |
| 2 | 24 V DC supply voltage (L+) |
| 3 | supply transistor outputs (L+) |
| 4 | sensor signal pnp |
| 5 | DC Sensor supply (L+) |
| 6 | DC Sensor supply (L-) |
| 7 | AC supply voltage (L) |
| 8 | AC supply voltage (N) |
| 9 | not used |
| 10 | sensor signal npn |
| 11 | reset pnp |
| 12 | transistor output pnp |
| 13 | relay common |
| 14 | relay normally open |
| 15 | relay normally closed |
| 16 | not used |
| 17 | not used |
| 18 | not used |
| 19 | not used |
| 20 | not used |
| 21 | not used |
| 22 | analogue output (mA) |
| 23 | analogue output (GND) |
| 24 | analogue output (V) |