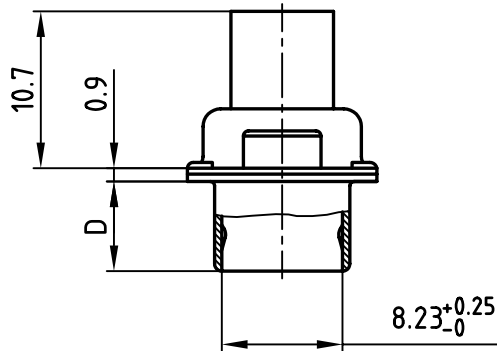
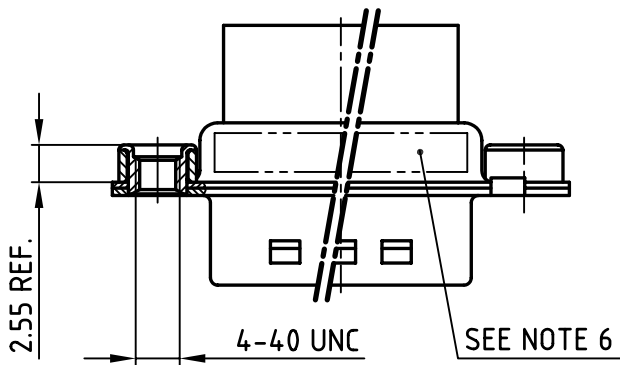
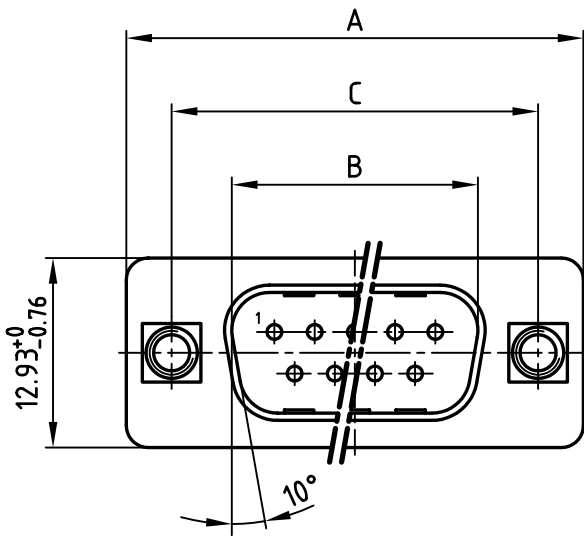


used for: D-SUB

POS.	A $-0.76$	B $+0.25$	C	D $-0.3$	Part-NO.
9	31.19	16.79	25.00 $\begin{smallmatrix} +0.12 \\ -0.13 \end{smallmatrix}$	6.12	DSS1XPXXG04X
15	39.52	25.12	33.30 $\begin{smallmatrix} +0.15 \\ -0.1 \end{smallmatrix}$	6.12	DSS2XPXXG04X
25	53.42	38.84	47.04 $\pm 0.13$	5.99	DSS3XPXXG04X
37	69.70	55.30	63.50 $\pm 0.13$	5.99	DSS4XPXXG04X



Directive 2002/95/EC  
"RoHS"  
Compliant

**NOTES:**

1. METALSHELLS: STEEL; min. 315µin TIN over 40-80µin NICKEL
2. INSULATORS: PBT GF UL 94 V-0, BLACK
3. THREADED INSERT: COPPER ALLOY; min. 200µin TIN over 80µin NICKEL
4. COLLAR: COPPER ALLOY; min. 200µin TIN over 80µin NICKEL
5. MAXIMUM TORQUE VALUE FOR THREAD: 6in.LBS
6. CONNECTOR IS PART MARKED: PART-NO. CONEC ABC

APPROVAL # FREIGABE # DEBLOCAGE # AUTORIZACION # APPROVAL	
CUSTOMER APPROVAL DATE:	
NAME:	TITLE:
COMPANY NAME:	
APPROVAL # FREIGABE # DEBLOCAGE # AUTORIZACION # APPROVAL	

THIS DRAWING MAY NOT BE COPIED OR REPRODUCED IN ANY WAY, AND MAY NOT BE PASSED ON TO A THIRD PARTY WITHOUT WRITTEN PERMISSION.  
 OWNERSHIP AND COPYRIGHT OF CONEC GmbH  
 DO NOT ALTER CAD DRAWING BY HAND

tolerance		 dim. in mm	scale: 2:1
			material: SEE NOTES
2006	date	name	<b>D-SUB MALE</b> 9-37pos. CRIMP STYLE with threaded insert
drawn	29.09.	Lehmenkühler	
appd.	02.10.	Kühle	
norm	DIN 41652		
d-old			
a	Origin		dwg no: AutoCAD 2006
rev.	description	date	name
<b>CONEC</b> ®			DIN-A 4 sh: 1/1
			part no: SEE TABLE

4

3

2

1