

Multi-tube Holder

Series *TM*

Easy arrangement of tubing

Easy loading and firm holding of tube

Possible to separate options depending on number of connecting tubes

Use of flame resistance resin (V-0)



Applicable Tubing

Tube material	Nylon, Soft nylon, Polyurethane
Tube O.D.	ø4, ø6, ø8, ø10, ø12

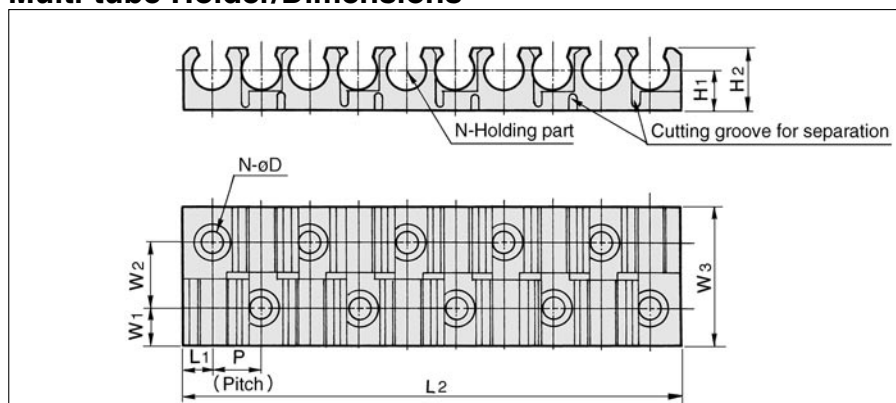
Specifications

Ambient temperature	-20 to 60°C		
Material	Flame resistance polypropylene (UL-94 standard, V-0)		
Colour	Black		
Accessories	For mounting Cross recessed head counter-sunk tapping screw (Black zinc chromate treatment)		
	Part No.	Size (Nominal X Length)	No. of tubings
	TM-04	2 X 6	4
	TM-06	2.6 X 8	
	TM-08		
TM-10	3 X 8		
TM-12			

Model

Tube O.D. (mm)	Part No.	No. of connecting tubes (MAX.)		
		6	8	12
4	TM-04			●
6	TM-06			●
8	TM-08		●	
10	TM-10	●		
12	TM-12	●		

Multi-tube Holder/Dimensions

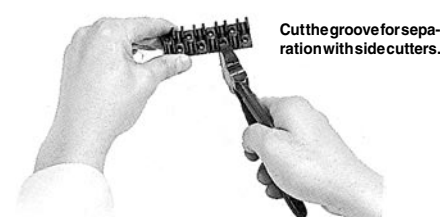


Tube O.D. (mm)	Model	N (No. of holding parts)	P	L1	L2	W1	W2	W3	H1	H2	øD	Mounting screw
												Nominal X Length
4	TM-04	12	6	3.25	72.5	4.5	8	17	5	7.5	2.2	2 X 6
6	TM-06	12	7.5	4.5	91.5	5.5	10	21	6.5	10	2.8	2.6 X 8
8	TM-08	8	9.5	5.5	77.5	6	11	23	7.5	12	2.8	2.6 X 8
10	TM-10	6	12.5	7.5	77.5	6.5	12	25	8.8	14.3	3.2	3 X 8
12	TM-12	6	15	9	93	6.5	12	25	9.8	16.3	3.2	3 X 8

How to Use

⚠ Caution

- ① Cut the multi-tube holder depending on number of tubes to be connected.
<Cutting method>



- ② Install the multi-tube holder to equipment by use of the phillips head recessed, countersunk tapping screw.
③ Lay the tube across the gripper and push on the tube.
④ For removing the tubes, pull up the tubes from the gripper.