

534202B02853G

TO-220, TO-220-single gauge (0.020")

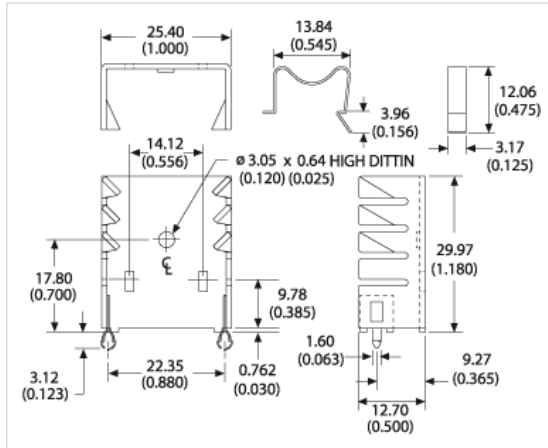


Channel style heat sink with Shur-Lock tabs and device clip

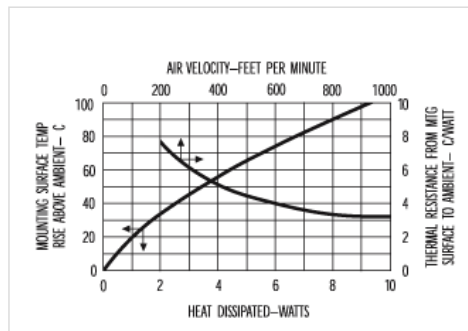
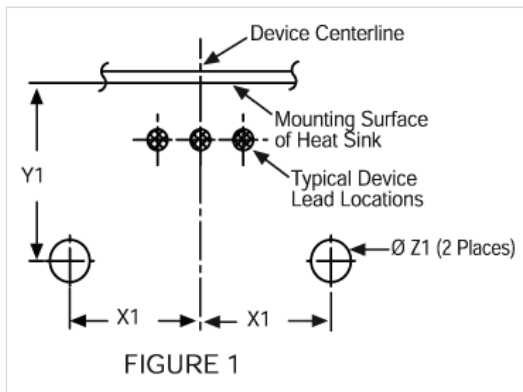
This non-electronic component is functionally unaffected by the normal soldering or reflow processes used for semiconductor circuits. The heat resistance time or heat resistance temperature is not applicable for the component.

Height: 50.80
Mount Orientation: Vertical
Finish: Black Anodize
RoHS: compliant

Thermal Resistance: 13.40



X Dim: 11.18 (0.440) | Y Dim: 8.00 (0.315) | Z Dim: 2.39 (0.094)



Shurlock Tabs