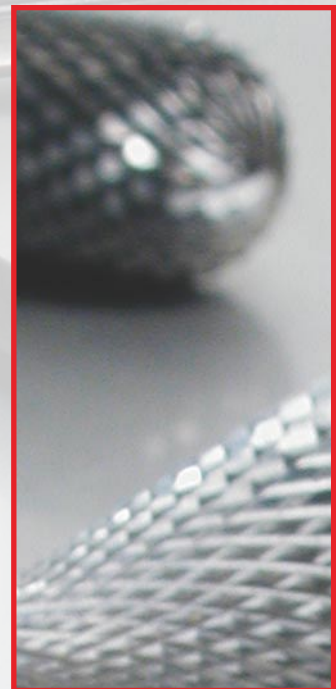




COMPETENCE
IN PRECISION
AND QUALITY

ROTARY BURRS



Tungsten carbide rotary burrs shape A cylinder (ZYA) without end tothing

Finish: Shape A cylinder (ZYA)
without end tothing

Cutting: Cross tothing

Tothing: CT 4

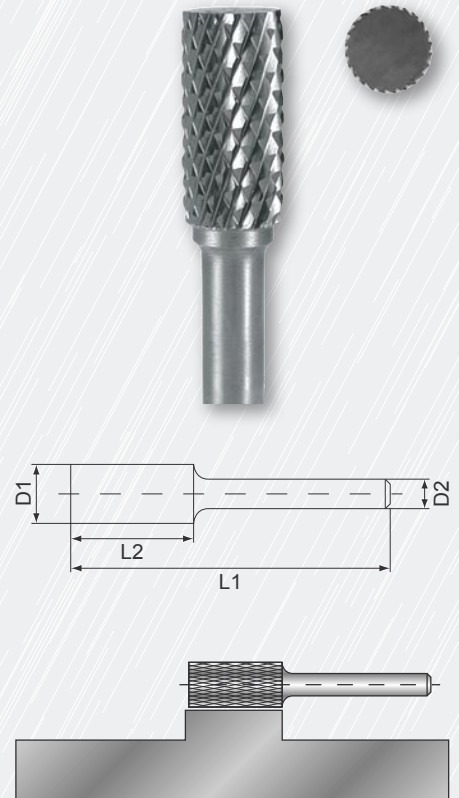
Surface: bright

The high-performance tungsten carbide rotary burrs provide maximum cutting edge stability with a simultaneous high tenacity of the cutting edge. The cross tothing provides a higher cutting capacity compared with the simple tothing. This particularly has a positive effect on materials which are difficult to cut.

Fields of application: for high-alloy steels, non-rusting steels, acid-resistant steels, heat-resistant steels, die-casts and plastics. To de-bur, break edges, trim, pro-cess welding seams, surface processing.

Packing unit:
each in plastic packaging

Ø-D1 mm	L2 mm	Total length L1 min. mm	Shank-Ø D2 mm	Article no.	Price / each €
3,0	14,0	38,0	3,0	116 046	
6,0	18,0	58,0	6,0	116 010	
8,0	18,0	60,0	6,0	116 011	
10,0	20,0	60,0	6,0	116 012	
12,0	25,0	65,0	6,0	116 013	
16,0	25,0	65,0	6,0	116 014	



Tungsten carbide rotary burrs shape A cylinder (ZYA) with end tothing

Finish: Shape A cylinder (ZYA)
with end tothing

Cutting: Cross tothing

Tothing: CT 4

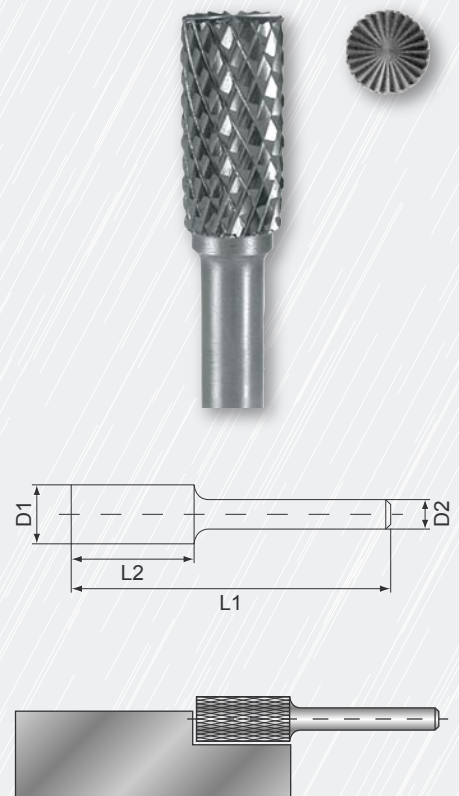
Surface: bright

The high-performance tungsten carbide rotary burrs provide maximum cutting edge stability with a simultaneous high tenacity of the cutting edge. The cross tothing provides a higher cutting capacity compared with the simple tothing. This particularly has a positive effect on materials which are difficult to cut.

Fields of application: for high-alloy steels, non-rusting steels, acid-resistant steels, heat-resistant steels, die-casts and plastics. To de-bur, break edges, trim, pro-cess welding seams, surface processing.

Packing unit:
each in plastic packaging

Ø-D1 mm	L2 mm	Total length L1 min. mm	Shank-Ø D2 mm	Article no.	Price / each €
3,0	14,0	38,0	3,0	116 047	
6,0	18,0	58,0	6,0	116 015	
8,0	18,0	60,0	6,0	116 016	
10,0	20,0	60,0	6,0	116 017	
12,0	25,0	65,0	6,0	116 018	
16,0	25,0	65,0	6,0	116 019	



Tungsten carbide rotary burrs shape C oval (WRC)

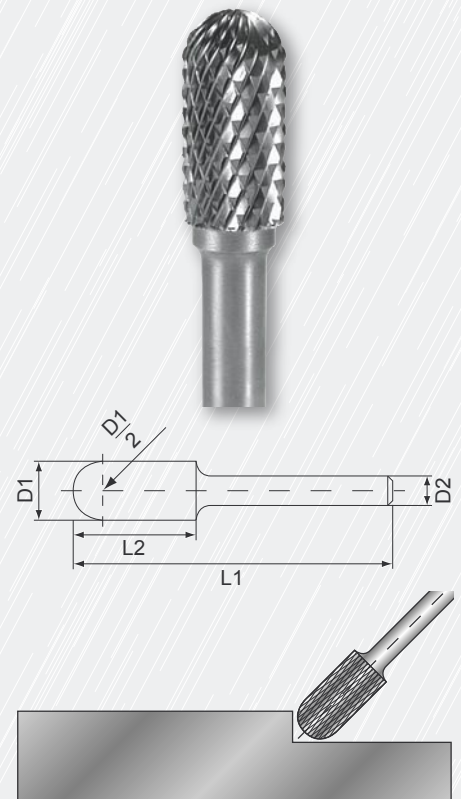
Finish: Shape C oval (WRC)
 Cutting: Cross toothing
 Toothing: CT 4
 Surface: bright

The high-performance tungsten carbide rotary burrs provide maximum cutting edge stability with a simultaneous high tenacity of the cutting edge. The cross toothing provides a higher cutting capacity compared with the simple toothing. This particularly has a positive effect on materials which are difficult to cut.

Fields of application: for high-alloy steels, non-rusting steels, acid-resistant steels, heat-resistant steels, die-casts and plastics. To de-bur, break edges, trim, pro-cess welding seams, surface processing.

Packing unit:
each in plastic packaging

Ø-D1 mm	L2 mm	Total length L1 min. mm	Shank-Ø D2 mm	Article no.	Price / each €
3,0	14,0	38,0	3,0	116 048	
6,0	18,0	56,0	6,0	116 020	
8,0	18,0	60,0	6,0	116 021	
10,0	20,0	60,0	6,0	116 022	
12,0	25,0	65,0	6,0	116 023	
16,0	25,0	65,0	6,0	116 024	



Tungsten carbide rotary burrs shape G tree (SPG)

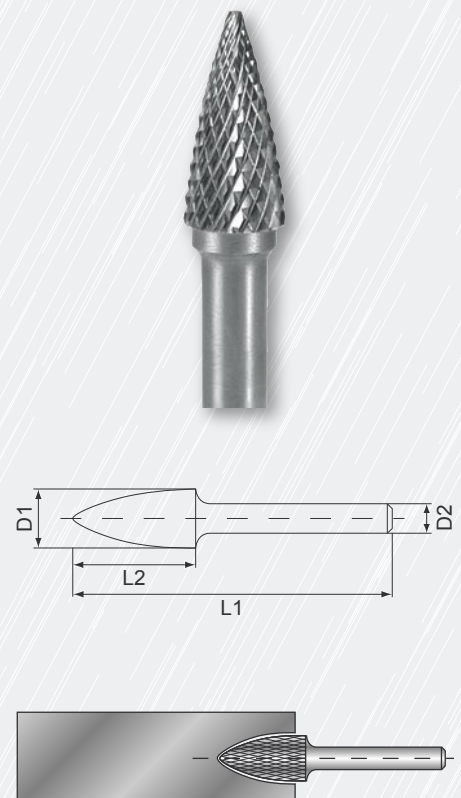
Finish: Shape G tree (SPG)
 Cutting: Cross toothing
 Toothing: CT 4
 Surface: bright

The high-performance tungsten carbide rotary burrs provide maximum cutting edge stability with a simultaneous high tenacity of the cutting edge. The cross toothing provides a higher cutting capacity compared with the simple toothing. This particularly has a positive effect on materials which are difficult to cut.

Fields of application: for high-alloy steels, non-rusting steels, acid-resistant steels, heat-resistant steels, die-casts and plastics. To de-bur, break edges, trim, pro-cess welding seams, surface processing.

Packing unit:
each in plastic packaging

Ø-D1 mm	L2 mm	Total length L1 min. mm	Shank-Ø D2 mm	Article no.	Price / each €
3,0	13,0	38,0	3,0	116 049	
6,0	18,0	58,0	6,0	116 025	
8,0	18,0	60,0	6,0	116 026	
10,0	20,0	60,0	6,0	116 027	
12,0	25,0	65,0	6,0	116 028	
16,0	25,0	70,0	6,0	116 029	



Tungsten carbide rotary burrs shape F ball nose tree (RBF)

Finish: shape F ball nose tree (RBF)

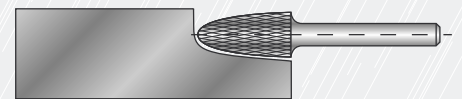
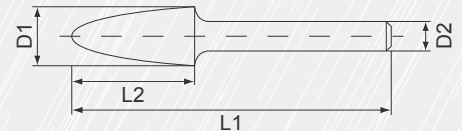
Cutting: Cross toothing

Toothing: CT 4

Surface: bright

The high-performance tungsten carbide rotary burrs provide maximum cutting edge stability with a simultaneous high tenacity of the cutting edge. The cross toothing provides a higher cutting capacity compared with the simple toothing. This particularly has a positive effect on materials which are difficult to cut.

Fields of application: for high-alloy steels, non-rusting steels, acid-resistant steels, heat-resistant steels, die-casts and plastics. To de-bur, break edges, trim, pro-cess welding seams, surface processing.



Packing unit:
each in plastic packaging

Ø-D1 mm	L2 mm	Total length L1 min. mm	Shank-Ø D2 mm	Article no.	Price / each €
3,0	13,0	38,0	3,0	116 050	
6,0	18,0	58,0	6,0	116 030	
8,0	18,0	60,0	6,0	116 031	
10,0	20,0	60,0	6,0	116 032	
12,0	25,0	65,0	6,0	116 033	
16,0	25,0	70,0	6,0	116 034	

Tungsten carbide rotary burrs shape M cone (SKM)

Finish: Shape M cone (SKM)

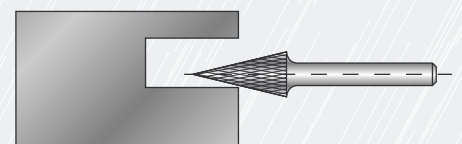
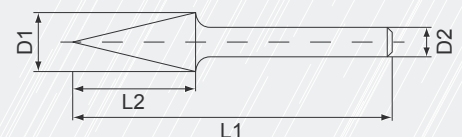
Cutting: Cross toothing

Toothing: CT 4

Surface: bright

The high-performance tungsten carbide rotary burrs provide maximum cutting edge stability with a simultaneous high tenacity of the cutting edge. The cross toothing provides a higher cutting capacity compared with the simple toothing. This particularly has a positive effect on materials which are difficult to cut.

Fields of application: for high-alloy steels, non-rusting steels, acid-resistant steels, heat-resistant steels, die-casts and plastics. To de-bur, break edges, trim, pro-cess welding seams, surface processing.



Packing unit:
each in plastic packaging

Ø-D1 mm	L2 mm	Total length L1 min. mm	Shank-Ø D2 mm	Article no.	Price / each €
3,0	11,0	38,0	3,0	116 051	
6,0	18,0	58,0	6,0	116 035	
8,0	18,0	60,0	6,0	116 036	
10,0	20,0	60,0	6,0	116 037	
12,0	25,0	65,0	6,0	116 038	
16,0	25,0	70,0	6,0	116 039	

Tungsten carbide rotary burrs shape D ball type (KUD)

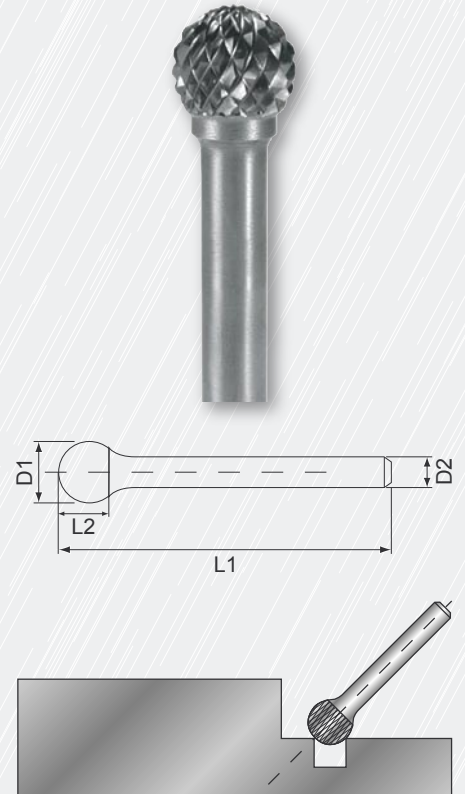
Finish: Shape D ball type (KUD)
Cutting: Cross toothing
Toothing: CT 4
Surface: bright

The high-performance tungsten carbide rotary burrs provide maximum cutting edge stability with a simultaneous high tenacity of the cutting edge. The cross toothing provides a higher cutting capacity compared with the simple toothing. This particularly has a positive effect on materials which are difficult to cut.

Fields of application: for high-alloy steels, non-rusting steels, acid-resistant steels, heat-resistant steels, die-casts and plastics. To de-bur, break edges, trim, pro-cess welding seams, surface processing.

Packing unit:
each in plastic packaging

Ø-D1 mm	L2 mm	Total length L1 min. mm	Shank-Ø D2 mm	Article no.	Price / each €
3,0	2,7	38,0	3,0	116 052	
6,0	5,0	56,0	6,0	116 041	
8,0	7,0	47,0	6,0	116 042	
10,0	9,0	49,0	6,0	116 043	
12,0	11,0	51,0	6,0	116 044	
16,0	15,0	54,0	6,0	116 045	



1.8

Set of tungsten carbide rotary burrs in steel case

Description	Article no.	Price / set €
Set of tungsten carbide rotary burrs 10-piece 2 Rotary burrs shape A cylinder (ZYA) without end toothing Ø D1 10,0 mm + Ø D1 12,0 mm 2 Rotary burrs shape C oval (WRC) Ø D1 10,0 mm + Ø D1 12,0 mm 2 Rotary burrs shape G tree (SPG) Ø D1 10,0 mm + Ø D1 12,0 mm 2 Rotary burrs shape F ball nose tree (RBF) Ø D1 10,0 mm / Ø D1 12,0 mm 1 Rotary burr shape M cone (SKM) Ø D1 12,0 mm 1 Rotary burr shape D ball type (KUD) Ø D1 12,0 mm	116 003	



