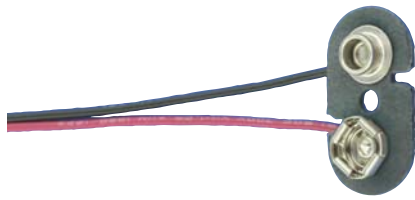


# PREMIUM 9 VOLT BATTERY STRAPS

FIBRE BASE



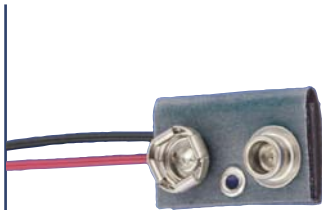
CAT. NO.	*LEAD LENGTH
68	NONE
72-4	4.00 (101.6)
72	7.00 (177.8)
72-8	8.00 (203.2)

**Base Size:**  
1.025 (26.0) x .535 (13.6)  
.062 (1.57) thick  
**Contacts:** Steel, Nickel Plate  
**Wire:** #22 AWG, 7/30 Prebond  
**End Strip:** .375 (9.5) Long, Tinned

\*Tolerance on lead length +/- .250 (6.4)

FIBRE BASE

- Fully Insulated
- Flexible assembly



**Cover Size:**  
.900 (22.9) x .575 (14.6)  
**Contacts:** Steel, Nickel Plate  
**Wire:** #22 AWG, 7/30 Prebond  
**End Strip:** .375 (9.5) Long, Tinned

\*Tolerance on lead length +/- .250 (6.4)

I - STYLE

CAT. NO.	*LEAD LENGTH
83-4	4.00 (101.6)
83	6.50 (165.1)
83-8	8.00 (203.2)

**Cover Size:**  
.900 (22.9) x .575 (14.6)  
**Contacts:** Steel, Nickel Plate  
**Wire:** #22 AWG, 7/30 Prebond  
**End Strip:** .375 (9.5) Long, Tinned

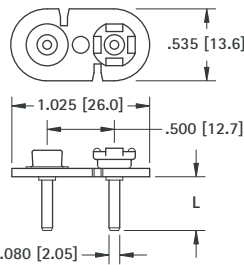
\*Tolerance on lead length +/- .250 (6.4)

T - STYLE

CAT. NO.	*LEAD LENGTH
85-4	4.00 (101.6)
85-6	6.50 (165.1)
85-8	8.00 (203.2)

## VERTICAL 9 VOLT PC SNAP-ON CONTACT

- Space saving, economical
- Excellent mechanical strength
- Low contact resistance
- Durable fibre base
- Wave solderable
- Anti-Wicking Design

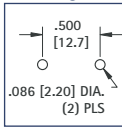


### SPECIFICATIONS

**Base:** .062 (1.57) thick Fibre  
**Contacts:** Steel, Nickel Plate  
**Pins:** Brass, Tin Plate

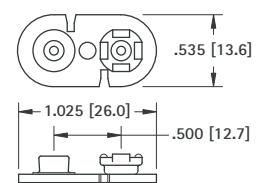
CAT. NO.	L LENGTH
967 (with PC Pins)	.120 (3.0)
968 (with PC Pins)	.400 (10.2)

### Mounting Detail



## 9 VOLT SNAP-ON CONTACT

- Cost saving design
- Ideal for custom applications
- Attach your own terminals and wire leads



### SPECIFICATIONS

**Base:** .062 (1.57) thick Fibre  
**Contacts:** Steel, Nickel Plate

**CAT. NO. 68** (without PC Pins)

## DUAL 9 VOLT BATTERY STRAP

This dual battery strap is pre-wired for connecting two 9 Volt batteries. Base made from fibre material with steel, nickel plated contacts. Wires have tinned copper conductors, PVC insulation and the ends are stripped for easy connection. Wires meet UL/CSA #1061 requirements.

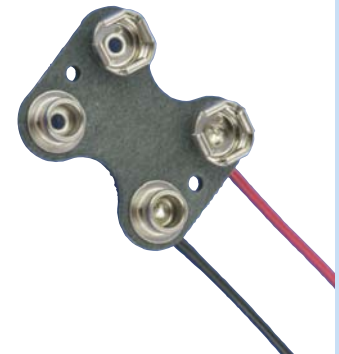
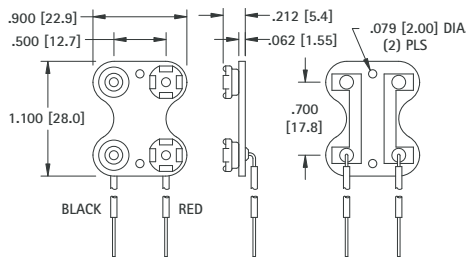
### SPECIFICATIONS

**Contacts:** Steel, Nickel Plate  
**Wire:** #22 AWG, 7/30 Prebond  
**End Strip:** .375 (9.5) Long, Tinned

CAT. NO.	*LEAD LENGTH
227	7.00 (177.8)

\*Tolerance on lead length +/- .250 (6.4)

PARALLEL

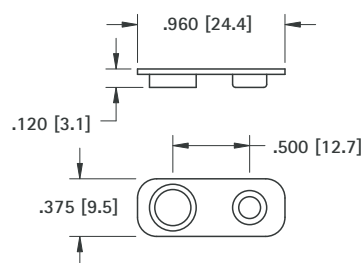


## PROTECTIVE BATTERY CAP

- Protects 9 Volt batteries and battery packs when they are not in use
- Snap-fits onto battery contacts
- Both male and female contacts are covered, minimizing physical damage which can occur during battery handling, shipping and storage
- Shields the battery contacts and reduces the potential of a short circuit between battery poles
- Protects sensitive electronic equipment, systems and circuits, cap prevents unwanted electrical discharges
- Protects the battery contacts from damage due to dust, dirt and contamination

### MATERIAL:

Impact Resistant Polypropylene, Black



**CAT. NO. 96**