

## Base strip - MSTBA 2,5/ 8-G - 1757527

Please be informed that the data shown in this PDF Document is generated from our Online Catalog. Please find the complete data in the user's documentation. Our General Terms of Use for Downloads are valid (<http://phoenixcontact.com/download>)

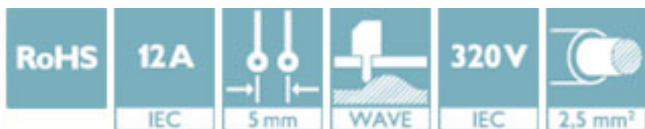
Header, nominal current: 12 A, rated voltage (III/2): 320 V, number of positions: 8, pitch: 5 mm, Color: green, contact surface: Tin, mounting: Wave soldering



The figure shows a 10-position version of the product

### Why buy this product

- Maximum flexibility when it comes to device design – one header for connectors with different connection technologies
- Well-known mounting principle allows worldwide use
- Plug-in direction parallel to the PCB
- Closed contour for optimum stability of the plug-in connection



### Key Commercial Data

Packing unit	100 STK
GTIN	
GTIN	4017918030056
Weight per Piece (excluding packing)	3.090 g
Custom tariff number	85366930
Country of origin	Germany

### Technical data

#### Dimensions

Length [ l ]	12 mm
Pitch	5 mm
Dimension a	35 mm
Width [ w ]	42 mm
Constructional height	8.6 mm
Height [ h ]	12.1 mm
Length of the solder pin	3.5 mm
Pin dimensions	1 x 1 mm

# Base strip - MSTBA 2,5/ 8-G - 1757527

## Technical data

### Dimensions

Hole diameter	1.4 mm
---------------	--------

### General

Range of articles	MSTBA 2,5/...-G
Insulating material group	I
Rated surge voltage (III/3)	4 kV
Rated surge voltage (III/2)	4 kV
Rated surge voltage (II/2)	4 kV
Rated voltage (III/3)	250 V
Rated voltage (III/2)	320 V
Rated voltage (II/2)	400 V
Connection in acc. with standard	EN-VDE
Nominal current $I_N$	12 A
Maximum load current	12 A
Insulating material	PA
Flammability rating according to UL 94	V0
Color	green
Number of positions	8

### Standards and Regulations

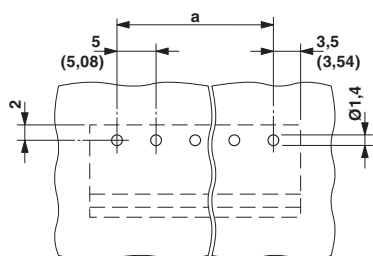
Connection in acc. with standard	EN-VDE
	CSA
Flammability rating according to UL 94	V0

### Environmental Product Compliance

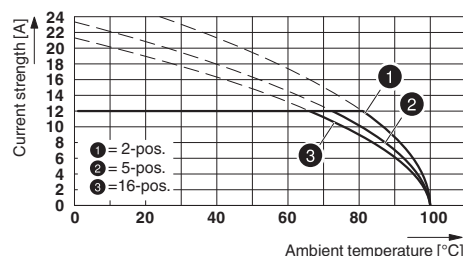
China RoHS	Environmentally friendly use period: unlimited = EFUP-e
	No hazardous substances above threshold values

## Drawings

Drilling diagram



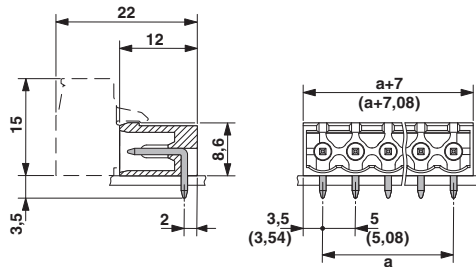
Diagram



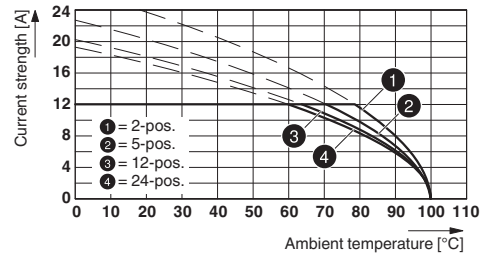
Type: FKCVR 2,5/...-ST with MSTBA 2,5/...-G

# Base strip - MSTBA 2,5/ 8-G - 1757527

Dimensional drawing



Diagram



Type: MSTBP 2,5/...-ST with MSTBA 2,5/...-G

## Classifications

### eCl@ss

eCl@ss 4.0	272607xx
eCl@ss 4.1	27260701
eCl@ss 5.0	27260701
eCl@ss 5.1	27260701
eCl@ss 6.0	27260704
eCl@ss 7.0	27440402
eCl@ss 8.0	27440402
eCl@ss 9.0	27440402

### ETIM

ETIM 3.0	EC001121
ETIM 4.0	EC002637
ETIM 5.0	EC002637
ETIM 6.0	EC002637

### UNSPSC

UNSPSC 6.01	30211810
UNSPSC 7.0901	39121409
UNSPSC 11	39121409
UNSPSC 12.01	39121409
UNSPSC 13.2	39121409

## Approvals

### Approvals

### Approvals

CSA / VDE Gutachten mit Fertigungsüberwachung / IEC60947-5-1 CB Scheme / cULus Recognized / EAC

### Ex Approvals

# Base strip - MSTBA 2,5/ 8-G - 1757527

## Approvals

### Approval details

CSA			13631
		B	D
Nominal current IN		15 A	10 A
Nominal voltage UN		300 V	300 V

VDE Gutachten mit Fertigungsüberwachung		<a href="http://www.vde.com/en/Institute/OnlineService/VDE-approved-products/Pages/Online-Search.aspx">http://www.vde.com/en/Institute/OnlineService/ VDE-approved-products/Pages/Online-Search.aspx</a>	40004701
Nominal current IN		12 A	
Nominal voltage UN		250 V	

IECEE CB Scheme		<a href="http://www.iecee.org/">http://www.iecee.org/</a>	DE1-58978-B1B2
Nominal current IN		12 A	
Nominal voltage UN		250 V	

cULus Recognized		<a href="http://database.ul.com/cgi-bin/XYV/template/LISEXT/1FRAME/index.htm">http://database.ul.com/cgi-bin/XYV/template/LISEXT/1FRAME/index.htm</a>	E60425-19931011
		B	D
Nominal current IN		15 A	10 A
Nominal voltage UN		300 V	300 V

EAC			B.01742
-----	--	--	---------

## Accessories

Accessories

Coding element

## Base strip - MSTBA 2,5/ 8-G - 1757527

### Accessories

Coding star - CR-MSTB - 1734401



Coding section, inserted into the recess in the header or the inverted plug, red insulating material

---

### Filler plug

Accessories - MSTB-BL - 1755477



Keying cap, for forming sections, plugs onto header pin, green insulating material

---

### Labeled terminal marker

Marker card - SK 5/3,8:FORTL.ZAHLEN - 0804183



Marker card, Card, white, labeled, Horizontal: Consecutive numbers 1 - 10, 11 - 20, etc. up to 91 - (99)100, Mounting type: adhesive, for terminal block width: 5 mm, Lettering field: 5 x 3.8 mm

---

### Additional products

Plug - TVFKC 1,5/ 8-ST - 1713897



Plug component, nominal current: 10 A, rated voltage (III/2): 320 V, number of positions: 8, pitch: 5 mm, connection method: Push-in spring connection, Color: green, contact surface: Tin

Printed-circuit board connector - TVFKCL 1,5/ 8-ST - 1715989



Plug component, nominal current: 10 A, rated voltage (III/2): 320 V, number of positions: 8, pitch: 5 mm, connection method: Push-in spring connection, Color: green, contact surface: Tin

## Base strip - MSTBA 2,5/ 8-G - 1757527

### Accessories

#### Plug - QC 1,5/ 8-ST - 1718025



Plug component, nominal current: 12 A, rated voltage (III/2): 630 V, number of positions: 8, pitch: 5 mm, connection method: Displacement connection, Color: green, contact surface: Tin

---

#### Printed-circuit board connector - FKCN 2,5/ 8-ST - 1732807



Plug component, nominal current: 12 A, rated voltage (III/2): 320 V, number of positions: 8, pitch: 5 mm, connection method: Push-in spring connection, Color: green, contact surface: Tin

---

#### Printed-circuit board connector - MSTB 2,5/ 8-ST - 1754562



Plug component, nominal current: 12 A, rated voltage (III/2): 320 V, number of positions: 8, pitch: 5 mm, connection method: Screw connection with tension sleeve, Color: green, contact surface: Tin

---

#### Printed-circuit board connector - MSTB 2,5/ 8-STZ - 1758982



Plug component, nominal current: 12 A, rated voltage (III/2): 320 V, number of positions: 8, pitch: 5 mm, connection method: Screw connection with tension sleeve, Color: green, contact surface: Tin

---

#### Printed-circuit board connector - MSTBP 2,5/ 8-ST - 1765836



Plug component, nominal current: 12 A, rated voltage (III/2): 320 V, number of positions: 8, pitch: 5 mm, connection method: Screw connection with tension sleeve, Color: green, contact surface: Tin

---

## Base strip - MSTBA 2,5/ 8-G - 1757527

### Accessories

#### Plug - SMSTB 2,5/ 8-ST - 1768448

Plug component, nominal current: 12 A, rated voltage (III/2): 320 V, number of positions: 8, pitch: 5 mm, connection method: Screw connection with tension sleeve, Color: green, contact surface: Tin



---

#### Printed-circuit board connector - FRONT-MSTB 2,5/ 8-ST - 1779479

Plug component, nominal current: 12 A, rated voltage (III/2): 320 V, number of positions: 8, pitch: 5 mm, connection method: Front screw connection, Color: green, contact surface: Tin



---

#### Printed-circuit board connector - MSTBT 2,5/ 8-ST - 1779893

Plug component, nominal current: 12 A, rated voltage (III/2): 320 V, number of positions: 8, pitch: 5 mm, connection method: Screw connection with tension sleeve, Color: green, contact surface: Tin



---

#### Printed-circuit board connector - MVSTBW 2,5/ 8-STEH - 1784309

Plug component, nominal current: 12 A, rated voltage (III/2): 320 V, number of positions: 8, pitch: 5 mm, connection method: Screw connection with tension sleeve, Color: green, contact surface: Tin

---

#### Printed-circuit board connector - MVSTBR 2,5/ 8-ST - 1792074

Plug component, nominal current: 12 A, rated voltage (III/2): 320 V, number of positions: 8, pitch: 5 mm, connection method: Screw connection with tension sleeve, Color: green, contact surface: Tin



---

#### Printed-circuit board connector - MVSTBW 2,5/ 8-ST - 1792582

Plug component, nominal current: 12 A, rated voltage (III/2): 320 V, number of positions: 8, pitch: 5 mm, connection method: Screw connection with tension sleeve, Color: green, contact surface: Tin



## Base strip - MSTBA 2,5/ 8-G - 1757527

### Accessories

#### Printed-circuit board connector - FKCT 2,5/ 8-ST - 1909278



Plug component, nominal current: 12 A, rated voltage (III/2): 320 V, number of positions: 8, pitch: 5 mm, connection method: Push-in spring connection, Color: green, contact surface: Tin

#### Printed-circuit board connector - FKCVR 2,5/ 8-ST - 1909773



Plug component, nominal current: 12 A, rated voltage (III/2): 320 V, number of positions: 8, pitch: 5 mm, connection method: Push-in spring connection, Color: green, contact surface: Tin

#### Printed-circuit board connector - FKCVW 2,5/ 8-ST - 1910092



Plug component, nominal current: 12 A, rated voltage (III/2): 320 V, number of positions: 8, pitch: 5 mm, connection method: Push-in spring connection, Color: green, contact surface: Tin

#### Printed-circuit board connector - FKC 2,5/ 8-ST - 1910416



Plug component, nominal current: 12 A, rated voltage (III/2): 320 V, number of positions: 8, pitch: 5 mm, connection method: Push-in spring connection, Color: green, contact surface: Tin

#### Printed-circuit board connector - FKCS 2,5/ 8-ST - 1974795



Plug component, nominal current: 12 A, rated voltage (III/2): 320 V, number of positions: 8, pitch: 5 mm, connection method: Push-in spring connection, Color: green, contact surface: Tin