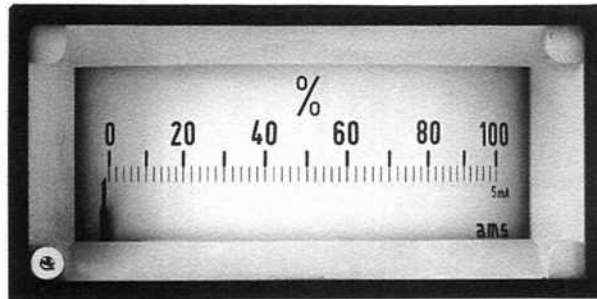


# Rectangular Panel Meters



## Moving coil edgewise meters Moving coil slim-line meters

- Edgewise meters in steel-sheet housing
- Slim-line meters in polycarbonate housing
- Available for mounting vertically or horizontally
- With built-in rectifier for AC input

**RECTANGULAR PANEL METERS**

# Rectangular Panel Meters

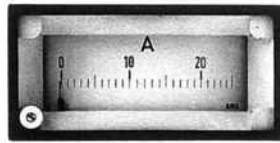
## Edgewise moving coil meters direct current and direct voltage accuracy class 1.5

housing according to **DIN 43700**

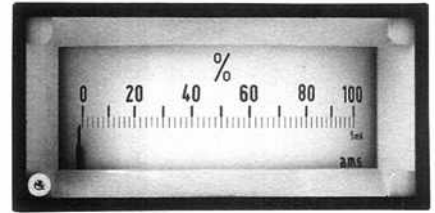
Available housing types:



**Pr 72 x 36**



**Pr 96 x 48**



**Pr 144 x 72**

	<b>Pr 72 x 36</b>	<b>Pr 96 x 48</b>	<b>Pr 144 x 72</b>
<b>Front frame</b>	72 x 36 mm	96 x 48 mm	144 x 72 mm
<b>Scale length approx.</b>	46 mm	61 mm	103 mm
<b>Weight approx.</b>	0.1 kg	0.3 kg	1.2 kg

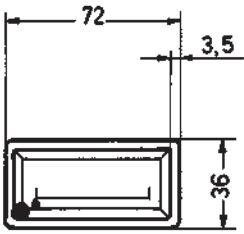
<b>Movement</b>	moving coil with core magnet (immune to magnetic fields)
<b>Bearing</b>	pivot with spring-loaded jewel
<b>Pointer</b>	beam-type knife-edge pointer
<b>Mounting version</b>	choose from <b>horizontal</b> or <b>vertical</b> mounting
<b>Housing</b>	steel sheet, black-painted
<b>Front frame</b>	black, grey on request

**RECTANGULAR PANEL METERS**

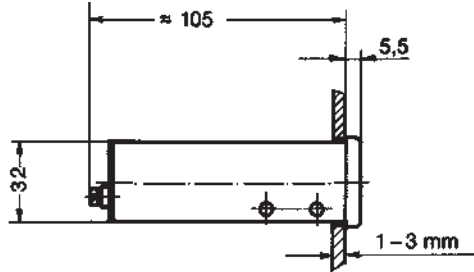
Measuring ranges	Ammeters			Internal resistance /Δ U			Voltsmeters	
		Pr 72 x 36	Pr 96 x 48	Pr 72 x 36	Pr 96 x 48	Pr 144 x 72		
	50 μA	4800 Ω	3900 Ω	6000 Ω	100 mV	} Ri approx. 1000 Ω/V		
	100 μA	3500 Ω	840 Ω	6000 Ω	150 mV			
	150 μA	1500 Ω	590 Ω	2900 Ω	400 mV			
	250 μA	550 Ω	460 Ω	1300 Ω	600 mV			
	400 μA	220 Ω	145 Ω	380 Ω	1 V			
	600 μA	95 Ω	75 Ω	170 Ω	1.5 V			
	1 mA	35 Ω	30 Ω	110 Ω	2.5 V			
	1.5 mA	18 Ω	20 Ω	40 Ω	4 V			
	2.5 mA	10 Ω	7 Ω	17 Ω	6 V			
	4 mA	4 Ω	3 Ω	10 Ω	10 V			
	6 mA	3.5 Ω	2.4 Ω	10 Ω	15 V			
	10 mA	2.5 Ω	2.2 Ω	6 Ω	25 V			
	15 mA	2.2 Ω	2 Ω	4 Ω	40 V			
	20 mA	2.0 Ω	2 Ω	1.5 Ω	60 V			
	25-600 mA	60 mV	60 mV	60 V	100 V			
	1 A	60 mV	60 mV	60 V	150 V			
	1.5 A	60 mV	60 mV	60 V	250 V			
	2.5 A	60 mV	60 mV	60 V	900 V			
	4 A	60 mV	60 mV	60 V	500 V			
	6 A	60 mV	60 mV	60 V	600 V			
x) for operation with a separate shunt	10 A	60 mV	60 mV	60 V				
tolerance of the internal resistance ± 20%	4 -20 A	12 Ω	12 Ω	12 Ω				
	60 mV x)	12 Ω	12 Ω	12 Ω				

# Rectangular Panel Meters

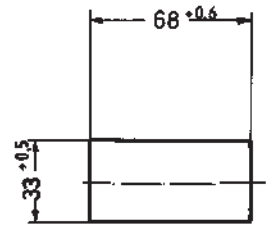
## Edgewise moving coil meters



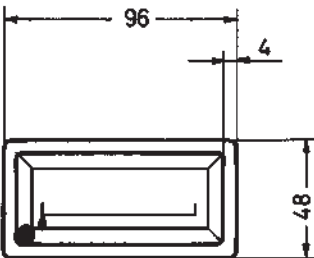
**PR 72x36**



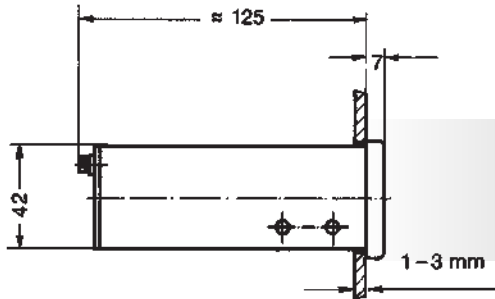
spring fixing acc. to  
DIN 43 853, Form A



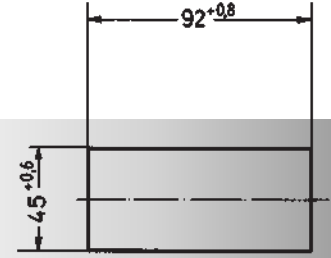
panel cut out



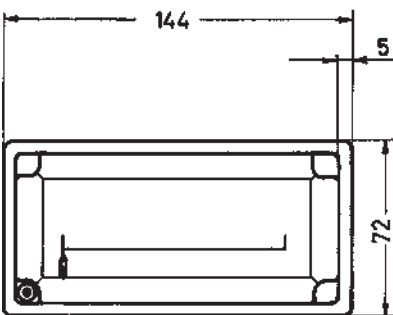
**PR 96x48**



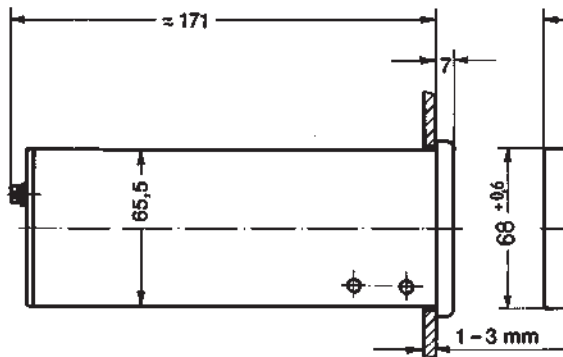
spring fixing acc. to  
DIN 43 853, Form A



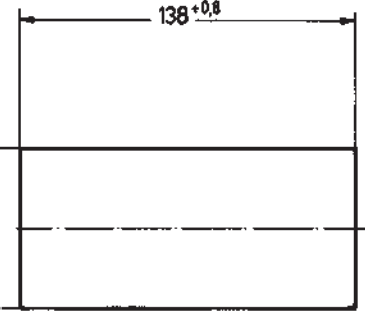
panel cut out



**PR 144x72**



spring fixing acc. to  
DIN 43 853, Form A



panel cut out

**RECTANGULAR PANEL METERS**

# Rectangular Panel Meters

**Slim-line moving coil meters  
direct current and direct voltage  
accuracy class 1.5**

housing according to **DIN 43700**

Available housing types:



**Pr 48 x 24**



**Pr 72 x 24**



**Pr 96 x 24/W**

scale changeable from front

	<b>Pr 48 x 24</b>	<b>Pr 72 x 24</b>	<b>Pr 96 x 24</b>
<b>Front frame</b>	48 x 24 mm	72 x 24 mm	96 x 24 mm
<b>Scale length approx.</b>	32 mm	48 mm	60 mm
<b>Weight approx.</b>	0.08 kg	0.1 kg	0.15 kg

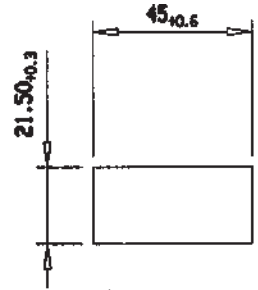
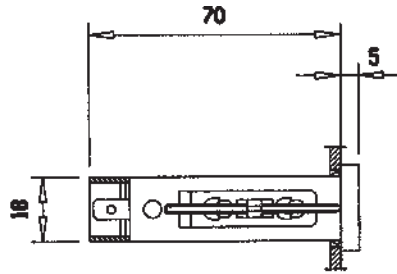
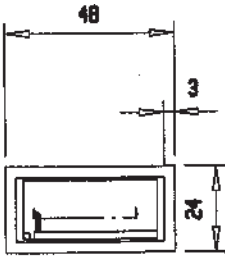
**RECTANGULAR PANEL METERS**

<b>Movement</b>	moving coil with core magnet (immune to magnetic fields)
<b>Bearing</b>	pivot with spring-loaded jewel
<b>Pointer</b>	beam-type pointer
<b>Mounting version</b>	choose from <b>horizontal</b> or <b>vertical</b> mounting
<b>Housing</b>	polycarbonate
<b>Front frame</b>	black, grey on request

Measuring ranges	Ammeters			Internal resistance / $\Delta U$			Voltmeters	
		Pr 48 x 24	Pr 72 x 24	Pr 48 x 24	Pr 72 x 24	Pr 96 x 24		
	50 $\mu$ A	4500 $\Omega$	4500 $\Omega$	4500 $\Omega$	4500 $\Omega$	4500 $\Omega$	100 mV	} Ri approx. 1000 $\Omega$ /V
	100 $\mu$ A	3800 $\Omega$	3800 $\Omega$	3800 $\Omega$	3800 $\Omega$	3800 $\Omega$	150 mV	
	150 $\mu$ A	3800 $\Omega$	3800 $\Omega$	3800 $\Omega$	3800 $\Omega$	3800 $\Omega$	400 mV	
	250 $\mu$ A	1300 $\Omega$	1300 $\Omega$	1300 $\Omega$	1300 $\Omega$	1300 $\Omega$	600 mV	
	400 $\mu$ A	1100 $\Omega$	1100 $\Omega$	1100 $\Omega$	1100 $\Omega$	1100 $\Omega$	1 V	
	600 $\mu$ A	380 $\Omega$	380 $\Omega$	380 $\Omega$	380 $\Omega$	380 $\Omega$	1.5 V	
	1 mA	70 $\Omega$	70 $\Omega$	70 $\Omega$	70 $\Omega$	70 $\Omega$	2.5 V	
	1.5 mA	30 $\Omega$	30 $\Omega$	30 $\Omega$	30 $\Omega$	30 $\Omega$	4 V	
	2.5 mA	13 $\Omega$	13 $\Omega$	13 $\Omega$	13 $\Omega$	13 $\Omega$	6 V	
	4 mA	5 $\Omega$	5 $\Omega$	5 $\Omega$	5 $\Omega$	5 $\Omega$	10 V	
	6 mA	5 $\Omega$	5 $\Omega$	5 $\Omega$	5 $\Omega$	5 $\Omega$	15 V	
	10 mA	3 $\Omega$	3 $\Omega$	3 $\Omega$	3 $\Omega$	3 $\Omega$	25 V	
	15 mA	2.8 $\Omega$	2.8 $\Omega$	2.8 $\Omega$	2.8 $\Omega$	2.8 $\Omega$	40 V	
	20 mA	2.3 $\Omega$	2.3 $\Omega$	2.3 $\Omega$	2.3 $\Omega$	2.3 $\Omega$	60 V	
	25-600 mA	60 mV	60 mV	60 mV	60 mV	60 mV	100 V	
	1 A	-	-	-	-	-	150 V	
	1.5 A	-	-	-	-	-	250 V	
	2.5 A	-	-	-	-	-	400 V	
	4 A	-	-	-	-	-	500 V	
	6 A	-	-	-	-	-		
	10 A	-	-	-	-	-		
x) for operation with a separate shunt	4 -20 A	120 $\Omega$	120 $\Omega$	120 $\Omega$	120 $\Omega$	120 $\Omega$		
tolerance of the internal resistance $\pm 20\%$	60 mV x)	12 $\Omega$	12 $\Omega$	12 $\Omega$	12 $\Omega$	12 $\Omega$		

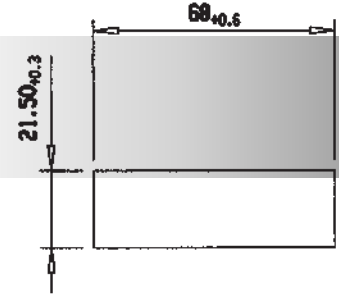
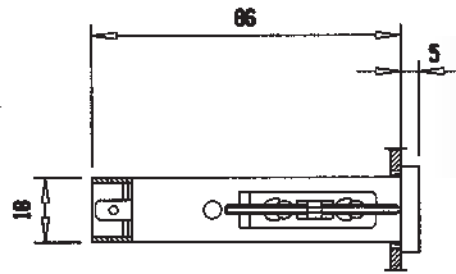
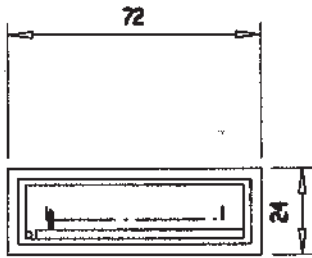
# Rectangular Panel Meters

## Slim-line moving coil meters



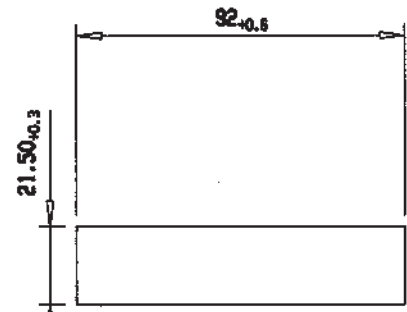
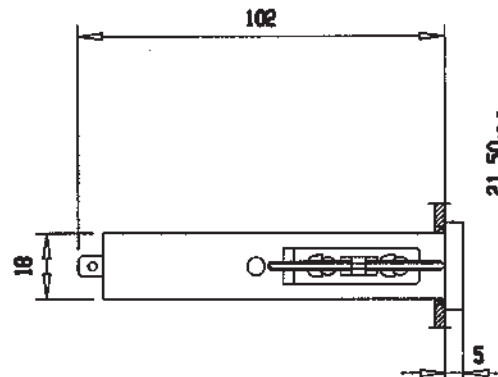
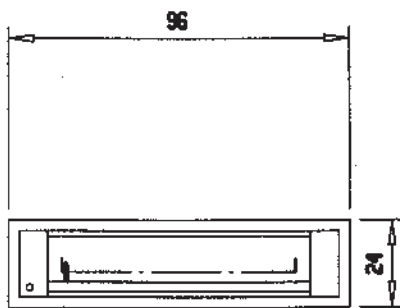
**PR 48 x 24**

Suitable for mosaic-grid mounting



**PR 72 x 24**

Suitable for mosaic-grid mounting



**PR 96 x 24/W**

Suitable for mosaic-grid mounting  
Easy scale change from front

**RECTANGULAR PANEL METERS**

# Rectangular Panel Meters

## Special Designs

### Edgewise Moving Coil Meters

### Slim-Line Moving Coil Meters

#### Housing

<b>Front frame colour</b>	standard: black special colour: grey
<b>Front glass</b>	Pr 72 x 36, Pr 96 x 48, Pr 144 x 72 anti-glare glass
<b>Scale illumination</b>	Pr 96 x 24/W

#### Scales

<b>Coloured scales</b>	scale background black, scale division and numbering white or yellow coloured scale divisions or marks
<b>Division</b>	double division for Pr 72 x 36, Pr 96 x 48, Pr 144 x 72 calibration in different parameter than the measured electrical value

#### Movement

<b>Internal resistance voltmeter</b>	standard approx. 1000 $\Omega/V$ special versions: 2000 $\Omega/V$ 5000 $\Omega/V$ 10,000 $\Omega/V$
<b>Rectifier (for measuring AC)</b>	voltmeter 6 - 600 V ammeter up to 20 mA built-in, from 1 to 20 A with separate current transformer n/0.01 A