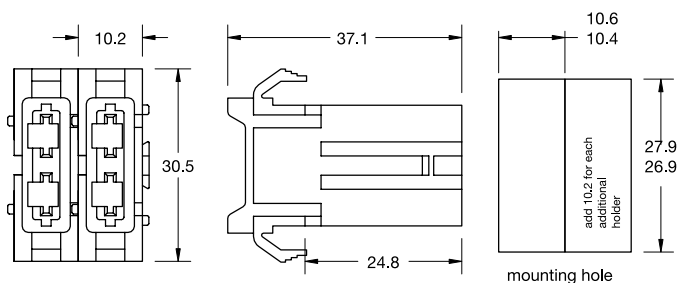


## Blade Fuseholder - Stackable Panel Mount Fuseholder for ATO® Style Blade Fuse



Dimensions in mm / Maße in mm



Intended for use with 32V ATO / FKS Fuses rated up to 20A or 30A.

ATO / FKS-Style Flachsicherungen für Sicherungseinsätze bis 20A oder 30A Nennstrom.

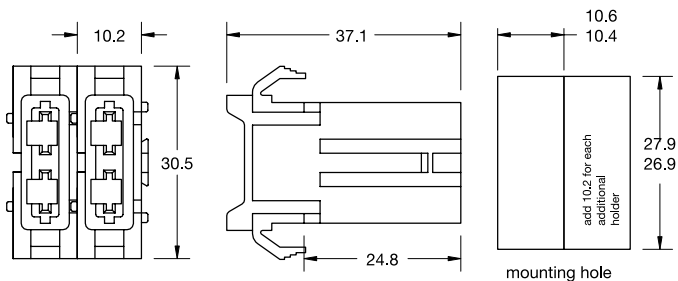
Part Number Artikel-Nr.	Description Beschreibung	Fuse Rating Sicherungs- Nennstrom
01550300_	14AWG/2.1mm <sup>2</sup> stranded black wire	20 A
01550400_	10AWG/5.3mm <sup>2</sup> stranded orange wire	30 A

Last figure of part number = packaging code, see Section "Packaging Index," pg. 157.

## ATO® Panel Mount Holder Components



Dimensions in mm / Maße in mm



Part Number Artikel-Nr.	Description Beschreibung	Fuse Rating Sicherungs- Nennstrom
868-062-000	Housing only, color black - 2700 pcs.	-
913-043	Reeled Terminals A, wire 14AWG/2.1mm <sup>2</sup> - 6000 pcs.	20A
0913043001	Singe Terminals A, wire 14AWG/2.1mm <sup>2</sup> - 1000 pcs.	20A
913-042	Reeled Terminals B, wire 10AWG/5.3mm <sup>2</sup> - 5000 pcs.	30A
0913042001	Singe Terminals B, wire 10AWG/5.3mm <sup>2</sup> - 1000 pcs.	30A