

## Weldon surface chucks

**ATORN®**

### Application

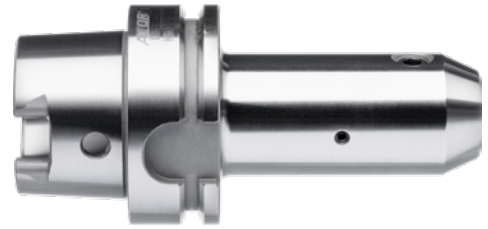
For clamping tools with straight shank and clamping surface in accordance with DIN 1835 B.

### Version

- Alloyed case-hardened steel with tensile strength at the core of at least 950 N/mm<sup>2</sup>
- Case-hardened HRc 60 ± 2 (HV 700 ± 50), hardness depth 0.8 mm ± 0.2 mm
- Taper angle tolerance quality < AT3 in accordance with DIN 7187 and DIN 2080
- All functional surfaces machined
- With Balluff chip hole

### Delivery

Supplied with clamping screw



<b>Art. no.</b>	<b>23157 617</b>
<b>Tool holding device</b>	HSK 63
<b>Clamping diameter</b>	12 mm
<b>Projecting length</b>	130 mm
<b>Length</b>	104 mm
<b>Outer diameter</b>	42 mm
<b>Coolant supply</b>	Internal axial
<b>Balancing quality</b>	G 2.5 at 25 rpm

### EAN-Code

4050293704334