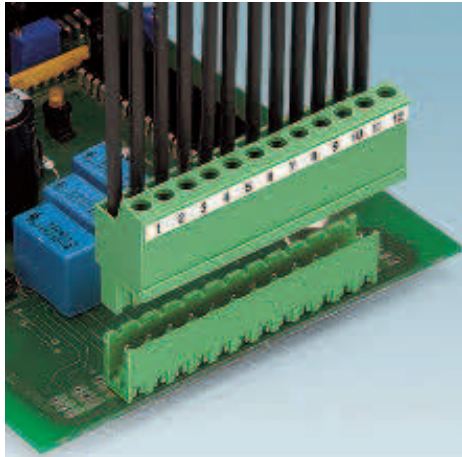


Plug-in connectors for MCR technology - COMBICON control

CLASSIC COMBICON plug-in connectors with 5.0 or 5.08 mm pitch

Single-level headers for wave soldering processes



- Standard pin strip for 320 V (III/2)
- Plug-in direction parallel and vertical to the PCB
- Versions with and without side panel
- Versions with threaded flange
- Versions with release aid
- Versions with engagement noses for locking connectors with self-locking flanges
- Other pin lengths available on request
- For larger numbers of positions up to 24-pos., visit: www.phoenixcontact.net/catalog

Notes:

In accordance with DIN EN 61984, COMBICON connectors have no switching power. During designated use, they must not be plugged in or disconnected when carrying voltage or under load.

COMBICON select

Possible combinations for plug-in connectors can be found in COMBICON select at www.phoenixcontact.net/catalog or starting on page 164.

Mounting screws for MSTBV 2,5/...-GEH-5,08: sheet metal screw ISO 1481-ST 2,2x6,5 C or ISO 7049-ST 2,2x6,5 C. Screw connection only permitted prior to soldering.

1) MSTBV 2,5/...-G and MSTBVA 2,5/...-G from 2 to 12-pos.: insulation material type/insulation material group = PA/I; more than 12-pos.: insulation material type/insulation material group = PBT/IIIa



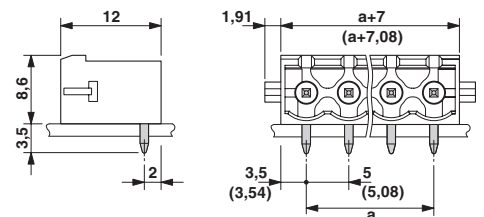
With engagement noses, plug-in direction parallel to the PCB



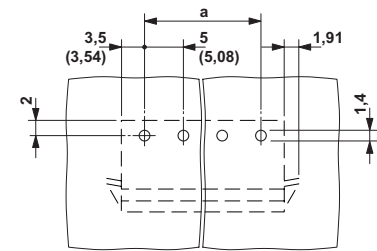
Accessories

For all types	Type	Page
	Marker cards SK 5/3,8 or SK 5,08/3,8	842
	Keying section CR-MSTB Order No. 1734401	38
	Keying tab MSTB-BL Order No. 1755477	861
Nur für MSTBV 2,5/...-G		
	Mounting flange MSTB-BF Order No. 1759981	860

Dimensional drawing



Drilling diagram



Technical data

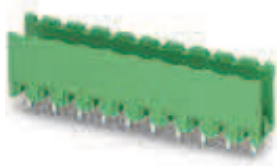
Technical data according to IEC/DIN VDE			
Rated current / conductor cross section	[A] / [mm ²]	12 / -	
Rated insulation voltage for pollution degree 2	[V]	320	
Pitch	[mm]	5 / 5.08	
Insulation coordination			
Surge voltage category / pollution degree		III / 3	III / 2
Rated insulation voltage	[V]	250	320
Rated surge voltage	[kV]	4	4
Approval data (UL/CUL)	Use Group	B	C
Nominal voltage	[V]	250	-
Nominal current	[A]	12	10
Connection capacity AWG	AWG	-	-
Approval data (CSA)	Use Group	B	C
Nominal voltage	[V]	-	-
Nominal current	[A]	-	-
Connection capacity AWG	AWG	-	-
General data			
Type of insulation material / insulation material group		PBT / IIIa ¹	
Inflammability class according to UL 94		V0	
Drill hole diameter / pin dimensions	[mm]	1.4 / 1 x 1 mm	

Ordering data

Type	Order No.	Pcs. / Pkt.
5.0 mm pitch, color: green		
MSTBA 2,5/ 2-G-RN	1944783	50
MSTBA 2,5/ 3-G-RN	1944796	50
MSTBA 2,5/ 4-G-RN	1944806	50
MSTBA 2,5/ 5-G-RN	1944819	50
MSTBA 2,5/ 6-G-RN	1944822	50
MSTBA 2,5/ 7-G-RN	1944835	50
MSTBA 2,5/ 8-G-RN	1944848	50
MSTBA 2,5/ 9-G-RN	1944851	50
MSTBA 2,5/10-G-RN	1944864	50
MSTBA 2,5/11-G-RN	1944877	50
MSTBA 2,5/12-G-RN	1944880	50
MSTBA 2,5/13-G-RN	1944893	50
MSTBA 2,5/14-G-RN	1944903	50
MSTBA 2,5/15-G-RN	1944916	50
MSTBA 2,5/16-G-RN	1944929	50
5.08 mm pitch, color: green		
MSTBA 2,5/ 2-G-5,08-RN	1926015	50
MSTBA 2,5/ 3-G-5,08-RN	1926028	50
MSTBA 2,5/ 4-G-5,08-RN	1926031	50
MSTBA 2,5/ 5-G-5,08-RN	1926044	50
MSTBA 2,5/ 6-G-5,08-RN	1926057	50
MSTBA 2,5/ 7-G-5,08-RN	1926060	50
MSTBA 2,5/ 8-G-5,08-RN	1926073	50
MSTBA 2,5/ 9-G-5,08-RN	1926086	50
MSTBA 2,5/10-G-5,08-RN	1926099	50
MSTBA 2,5/11-G-5,08-RN	1926109	50
MSTBA 2,5/12-G-5,08-RN	1926112	50
MSTBA 2,5/13-G-5,08-RN	1926125	50
MSTBA 2,5/14-G-5,08-RN	1926138	50
MSTBA 2,5/15-G-5,08-RN	1926141	50
MSTBA 2,5/16-G-5,08-RN	1926154	50

Plug-in connectors for MCR technology - COMBICON control

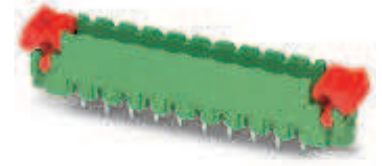
CLASSIC COMBICON plug-in connectors with 5.0 or 5.08 mm pitch



Without side panels,
plug-in direction vertical to the PCB



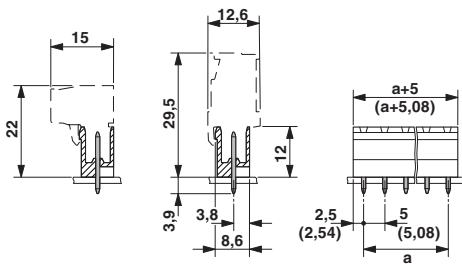
With side panels,
plug-in direction vertical to the PCB



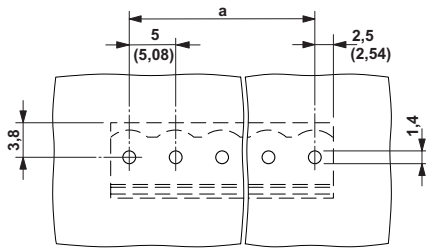
With release aid,
plug-in direction vertical to the PCB



Dimensional drawing



Drilling diagram

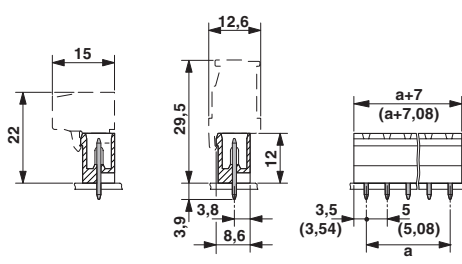


Ordering data

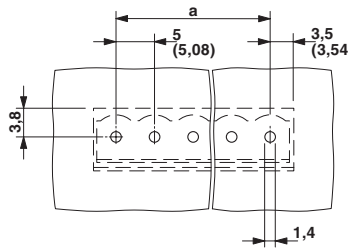
Type	Order No.	Pcs. / Pkt.
5.0 mm pitch, color: green		
MSTBV 2,5/ 2-G	1753437	50
MSTBV 2,5/ 3-G	1753453	50
MSTBV 2,5/ 4-G	1753479	50
MSTBV 2,5/ 5-G	1753495	50
MSTBV 2,5/ 6-G	1753518	50
MSTBV 2,5/ 7-G	1753534	50
MSTBV 2,5/ 8-G	1753550	50
MSTBV 2,5/ 9-G	1753576	50
MSTBV 2,5/10-G	1753592	50
MSTBV 2,5/11-G	1753615	50
MSTBV 2,5/12-G	1753631	50
MSTBV 2,5/13-G	1753657	50
MSTBV 2,5/14-G	1753673	50
MSTBV 2,5/15-G	1753699	50
MSTBV 2,5/16-G	1753712	50
5.08 mm pitch, color: green		
MSTBV 2,5/ 2-G-5,08	1758018	50
MSTBV 2,5/ 3-G-5,08	1758021	50
MSTBV 2,5/ 4-G-5,08	1758034	50
MSTBV 2,5/ 5-G-5,08	1758047	50
MSTBV 2,5/ 6-G-5,08	1758050	50
MSTBV 2,5/ 7-G-5,08	1758063	50
MSTBV 2,5/ 8-G-5,08	1758076	50
MSTBV 2,5/ 9-G-5,08	1758089	50
MSTBV 2,5/10-G-5,08	1758092	50
MSTBV 2,5/11-G-5,08	1758102	50
MSTBV 2,5/12-G-5,08	1758115	50
MSTBV 2,5/13-G-5,08	1758128	50
MSTBV 2,5/14-G-5,08	1758131	50
MSTBV 2,5/15-G-5,08	1758144	50
MSTBV 2,5/16-G-5,08	1758157	50



Dimensional drawing



Drilling diagram

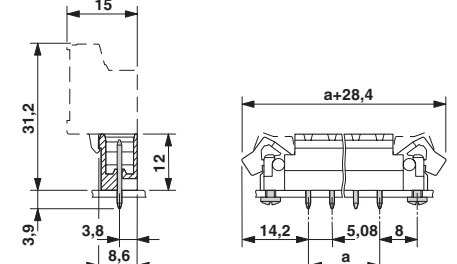


Ordering data

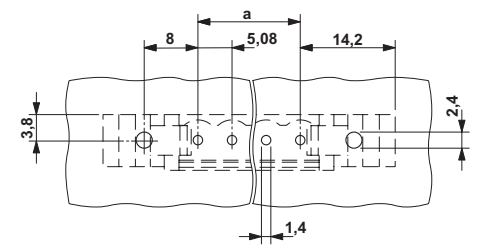
Type	Order No.	Pcs. / Pkt.
5.0 mm pitch, color: green		
MSTBVA 2,5/ 2-G	1755516	50
MSTBVA 2,5/ 3-G	1755529	50
MSTBVA 2,5/ 4-G	1755532	50
MSTBVA 2,5/ 5-G	1755545	50
MSTBVA 2,5/ 6-G	1755558	50
MSTBVA 2,5/ 7-G	1755561	50
MSTBVA 2,5/ 8-G	1755574	50
MSTBVA 2,5/ 9-G	1755587	50
MSTBVA 2,5/10-G	1755503	50
MSTBVA 2,5/11-G	1755590	50
MSTBVA 2,5/12-G	1755600	50
MSTBVA 2,5/13-G	1755613	50
MSTBVA 2,5/14-G	1755626	50
MSTBVA 2,5/15-G	1755639	50
MSTBVA 2,5/16-G	1755642	50
5.08 mm pitch, color: green		
MSTBVA 2,5/ 2-G-5,08	1755736	50
MSTBVA 2,5/ 3-G-5,08	1755749	50
MSTBVA 2,5/ 4-G-5,08	1755752	50
MSTBVA 2,5/ 5-G-5,08	1755765	50
MSTBVA 2,5/ 6-G-5,08	1755778	50
MSTBVA 2,5/ 7-G-5,08	1755781	50
MSTBVA 2,5/ 8-G-5,08	1755794	50
MSTBVA 2,5/ 9-G-5,08	1755804	50
MSTBVA 2,5/10-G-5,08	1755817	50
MSTBVA 2,5/11-G-5,08	1755820	50
MSTBVA 2,5/12-G-5,08	1755833	50
MSTBVA 2,5/13-G-5,08	1755846	50
MSTBVA 2,5/14-G-5,08	1755859	50
MSTBVA 2,5/15-G-5,08	1755862	50
MSTBVA 2,5/16-G-5,08	1755875	50



Dimensional drawing



Drilling diagram



Ordering data

Type	Order No.	Pcs. / Pkt.
5.08 mm pitch, color: green		
MSTBV 2,5/ 2-GEH-5,08	1808463	50
MSTBV 2,5/ 3-GEH-5,08	1808476	50
MSTBV 2,5/ 4-GEH-5,08	1808489	50
MSTBV 2,5/ 5-GEH-5,08	1808492	50
MSTBV 2,5/ 6-GEH-5,08	1808502	50
MSTBV 2,5/ 7-GEH-5,08	1808515	50
MSTBV 2,5/ 8-GEH-5,08	1808528	50
MSTBV 2,5/ 9-GEH-5,08	1808531	50
MSTBV 2,5/10-GEH-5,08	1808544	50
MSTBV 2,5/11-GEH-5,08	1808557	50
MSTBV 2,5/12-GEH-5,08	1808560	50
MSTBV 2,5/13-GEH-5,08	1808573	50
MSTBV 2,5/14-GEH-5,08	1808586	50
MSTBV 2,5/15-GEH-5,08	1808599	50
MSTBV 2,5/16-GEH-5,08	1808609	50