



Figure can vary

**Part no.: 50137340**  
**L300-M41M12B8-MLM24-UCA**  
**Safety locking device**



## Contents

- Technical data
- Dimensioned drawings
- Electrical connection
- Accessories

## Technical data

<b>Basic data</b>	
Series	L300
Contains	1x actuator 1x safety locking device
<b>Functions</b>	
Functions	Locking device with guard interlocking in acc. with EN ISO 14119 (type 4)
Activation mode of safety outputs	Safety outputs active if safety door is closed and locked
Operating principle	Open circuit current principle – Actuator locked if electromagnet is activated
<b>Characteristic parameters</b>	
SIL	3 , IEC 61508
SILCL	3 , IEC/EN 62061
Performance Level (PL)	Up to and including e , EN ISO 13849-1
MTTF <sub>d</sub>	2,725 years , EN ISO 13849-1
PFH <sub>D</sub>	1.17E-9 per hour
Mission time T <sub>M</sub>	20 years , EN ISO 13849-1
Category	4 , EN ISO 13849-1
DC	High
Encoding level	High , EN ISO 14119
<b>Electrical data</b>	
Type of wiring	Single connection
External safeguarding for supply circuit	2A type Gg (or equivalent)
<b>Performance data</b>	
Supply voltage U <sub>B</sub>	24 V , DC , -10 ... 10 % ,
Current consumption, max.	1,200 mA
<b>Inputs</b>	
Number of digital switching inputs	2 Piece(s)
<b>Switching inputs</b>	
Type	Digital switching input
Switching voltage, typ.	24 V
Voltage type	DC
Current consumption, typ.	5 mA
<b>Digital switching input 1</b>	
Function	I4 activation input: electromagnet
<b>Digital switching input 2</b>	
Function	I3 programming input / control input for reset

**Outputs**

Number of safety-related switching outputs (OSSDs) 2 Piece(s)

Number of digital switching outputs 2 Piece(s)

**Safety-related switching outputs**

Type Safety-related switching output OSSD

Voltage type DC

**Safety-related switching output 1**

Switching element Transistor , PNP

**Safety-related switching output 2**

Switching element Transistor , PNP

**Switching outputs**

Type Digital switching output

Voltage type DC

**Switching output 1**

Switching element Transistor , PNP

Function O3 signal output: protective-device closed

**Switching output 2**

Switching element Transistor , PNP

Function O4 signal output: protective-device locked

**Connection**

Number of connections 1 Piece(s)

**Connection 1**

Type of connection Connector

 Function Connection with PLC  
Contact connection  
Voltage supply

Thread size M12

Type Male

Material Metal

No. of pins 8 -pin

Encoding A-coded

**Cable properties**
**Mechanical data**

Housing material Metal

 Housing color Gray  
Red

Type of fastening Through-hole mounting

Side of cable entry From below

Approach speed 0.001 ... 0.5 m/s

Locking force, max. 9,750 N

Mechanical life time 1,000,000 actuation cycles , IEC 60947-5-1 switching cycles

Actuation frequency, max. 600 per hour , IEC 60947-5-1

Extraction force, unlocked actuator 30 N

**RFID sensor data**

 Assured operating distance  $S_{ao}$  2 mm

 Assured cut-out distance  $S_{ar}$  10 mm (actuator locked)  
4 mm (actuator not locked)

 Nominal switching distance  $S_n$  2.5 mm

**Part no.: 50137340 – L300-M41M12B8-MLM24-UCA – Safety locking device**

Repeatability	≤ 10 % S <sub>n</sub>
Max. switching frequency	1 Hz

**Operation and display**

Type of display	LED
Number of LEDs	5 Piece(s)
Operational controls	Standard

**Environmental data**

Ambient temperature, operation	-20 ... 50 °C
Ambient temperature, storage	-40 ... 75 °C

**Certifications**

Degree of protection	IP 67 IP 69K
Certifications	c UL US ECOLAB TÜV Süd

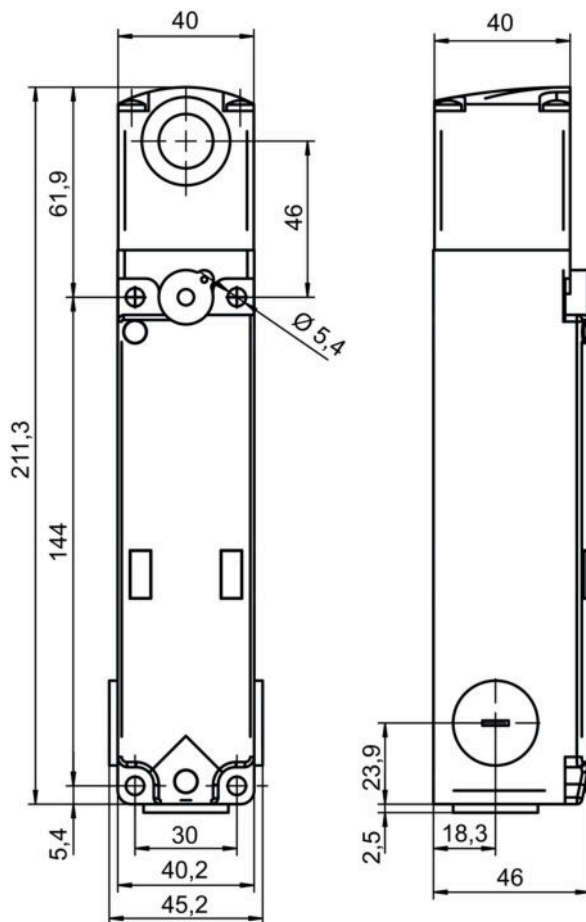
**Classification**

Customs tariff number	85369095
eCl@ss 8.0	27272603
eCl@ss 9.0	27272603
ETIM 5.0	EC002593
ETIM 6.0	EC002593

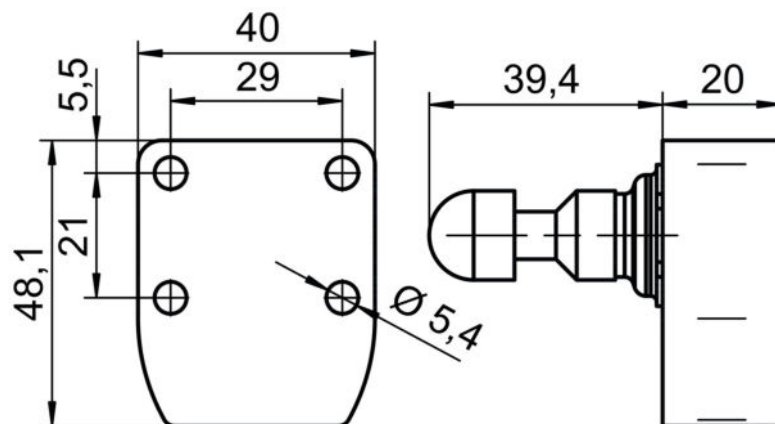
## Dimensioned drawings

All dimensions in millimeters

Safety locking device



Actuator

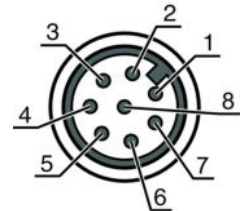


**Electrical connection**

Connection 1	
Type of connection	Connector
Function	Connection with PLC Contact connection Voltage supply
Thread size	M12





Connection 1	
Type	Male
Material	Metal
No. of pins	8 -pin
Encoding	A-coded

Pin	Pin assignment	Conductor color
1	A1 +24 V	White
2	O3 signal output: protective-device closed	Brown
3	A2 +0 V	Green
4	OS1 safe output	Yellow
5	O4 signal output	Gray
6	I3 programming input / control input for reset	Pink
7	OS2 safe output	Blue
8	I4 activation input: electromagnet	Red




## Accessories

### Connection technology - Connection cables

	Part no.	Designation	Article	Description
	50135128	KD S-M12-8A-P1-050	Connection cable	Connection 1: Connector, M12, Axial, Female, A-coded, 8 -pin Connection 2: Open end Shielded: Yes Cable length: 5,000 mm Sheathing material: PUR
	50135129	KD S-M12-8A-P1-100	Connection cable	Connection 1: Connector, M12, Axial, Female, A-coded, 8 -pin Connection 2: Open end Shielded: Yes Cable length: 10,000 mm Sheathing material: PUR
	50135121	KD U-M12-8A-P1-020	Connection cable	Connection 1: Connector, M12, Axial, Female, A-coded, 8 -pin Connection 2: Open end Shielded: No Cable length: 2,000 mm Sheathing material: PUR
	50135122	KD U-M12-8A-P1-050	Connection cable	Connection 1: Connector, M12, Axial, Female, A-coded, 8 -pin Connection 2: Open end Shielded: No Cable length: 5,000 mm Sheathing material: PUR

Part no.: 50137340 – L300-M41M12B8-MLM24-UCA – Safety locking device

## Actuator

	Part no.	Designation	Article	Description
	50132062 **	AC-L300-UCA	Actuator	Code type: Unique code Encoding level: high, EN ISO 14119 Dimensions: 40 mm x 48.1 mm x 59.4 mm Housing color: Red Type of fastening: Through-hole mounting

\*\* Included in delivery contents

### Note

A list with all available accessories can be found on the Leuze electronic website in the Download tab of the article detailed page.