

## Mounting Aids for Gear Racks, Straight Tooth System

**Material:** Steel C45K, tooth quality 8d25.  
Steel 16MnCr5, tooth quality 7h25.  
Stainless steel 1.4305 (AISI 303),  
tooth quality 8d25.

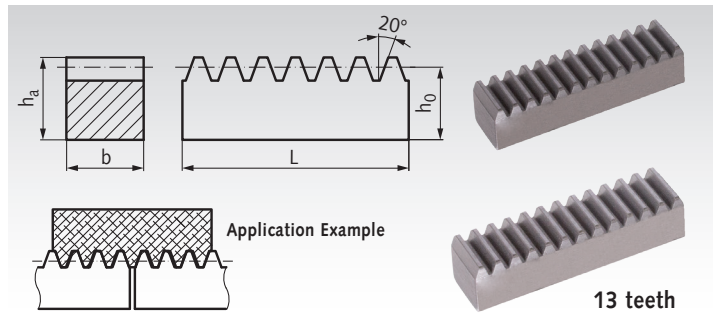


Reference profile 2 DIN 867 / DIN 3972.  
Pressure angle 20°. Tooth quality according to DIN 3967.

Milled teeth. Versions from steel 16MnCr5 have induction hardened teeth, ground at all long surfaces, including teeth.

**All these mounting aids have 13 teeth.**

Other dimensions and designs on request.



Ordering Details: e.g.: Product No. 227 600 00, Mounting Aid for Gear Racks, Module 1.5, 10 x 10 x 60 mm, C45K

Product No.	Module	Pitch mm	b mm	$h_a$ mm	$h_0$ mm	$L \approx$ mm	tooth quality	Material	Weight kg
227 600 00	1,5	4,71	10	10	8,5	60	8 d25	C45K	0,039
228 680 00	1,5	4,71	15	15	13,5	60	7 h25	16MnCr5	0,096
228 996 00	1,5	4,71	15	15	13,5	60	8 d25	1.4305	0,095
205 600 00	1,59	5	15	15	13,4	63	8 d25	C45K	0,101
205 996 00	1,59	5	15	15	13,4	63	8 d25	1.4305	0,101
241 600 00	2	6,28	16	20	18,0	80	8 d25	C45K	0,180
241 680 00	2	6,28	20	20	18,0	80	7 h25	16MnCr5	0,207
241 996 00	2	6,28	20	20	18,0	80	8 d25	1.4305	0,225
242 600 00	2,5	7,85	20	25	22,5	100	8 d25	C45K	0,353
242 996 00	2,5	7,85	25	25	22,5	100	8 d25	1.4305	0,438
243 600 00	3	9,42	25	30	27,0	120	8 d25	C45K	0,637
243 680 00	3	9,42	25	25	22,0	120	7 h25	16MnCr5	0,518
243 996 00	3	9,42	30	30	27,0	120	8 d25	1.4305	0,762
210 600 00	3,18	10	30	30	26,8	127	8 d25	C45K	0,815
210 996 00	3,18	10	30	30	26,8	127	8 d25	1.4305	0,815
244 600 00	4	12,57	30	40	36,0	162	8 d25	C45K	1,37
244 996 00	4	12,57	40	40	36,0	162	8 d25	1.4305	1,81
245 600 00	5	15,71	40	50	45,0	201	8 d25	C45K	2,84
246 600 00	6	18,85	60	60	54,0	241	8 d25	C45K	6,14
248 600 00	8	25,13	80	80	72,0	324	8 d25	C45K	14,3

Production-related tolerances of dimensions  $h_a$  and  $h_0$ :  
module 1.5 - 2: -0.2 mm  
module 2.5 - 4: -0.3 mm  
module 5 - 8: -0.4 mm

Mounting aids for gear racks, helical tooth system: see page 311-313, counterpart for mounting.

## Gear Racks from Plastic, Straight Tooth System, Die-Cast Version

**Material:** Polyacetal, nature white or polyketone (PK), nature, ivory-colored.

Reference profile 2 DIN 867 / DIN 3972. Pressure angle 20°. Moulded version. Usable also under water or other mediums.

**Polyacetal:** Standard quality with high hardness.

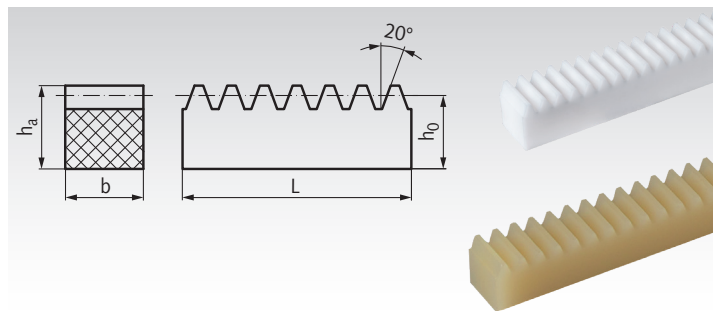
**Polyketone:** Lower friction leads to much larger lifespan, even without lubrication. Much higher safety against tooth breaking, specially at longterm usage.

Plastic gear racks are not straightened.

Temperature Range: -40°C to +140°C due to the load.

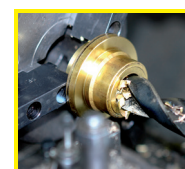
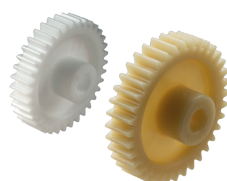
Material reference values page 1057.

Ordering Details: e.g.: Product No. 281 601 00, Gear Rack Polyacetal, Module 0.5, 4x4.5x250 mm



Product No. Polyacetal	Product No. Polyketon	Module	b mm	$h_a$ mm	$h_0$ mm	Nom. Length L mm	Weight Polyacetal g	Weight Polyketon g
281 601 00	281 601 01	0,5	4	4,5	4	250	5,2	4,6
281 602 00	281 602 01	0,5	4	6	5,5	250	7,5	6,8
282 601 00	282 601 01	0,7	6	6,7	6	250	12,0	10,6
283 601 00	283 601 01	1	9	9	8	250	24,8	21,8
284 601 00	284 601 01	1,25	10	11	9,75	250	35,0	30,8
285 601 00	285 601 01	1,5	12	12	10,5	250	42,3	37,2
286 601 00	286 601 01	2	15,4	11	9	250	44,8	39,3
287 601 00	287 601 01	2,5	17	13	10,5	250	58,2	51,1
288 601 00	288 601 01	3	19,4	15	12	250	75,8	66,6

Matching  
Spur Gears  
Page 237



Reworking within  
24h-service possible.  
Custom made parts  
on request.