

Accessories
Silencer (plug in)
10011

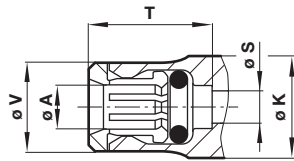

Page 14

Plug (acetal)
11004


Page 14

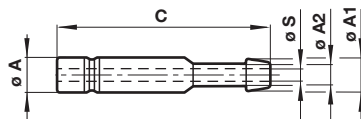
Technical data

Ø A O/D tube	Ø S*2)	Ø T*1)	V	Ø K
4	2,8	14	7,5	10
5	3,4	15	10	11
6	4,4	15,5	11	12
8	6	16,5	13	14
10	7,6	21	14,5	17
12	9,6	24,5	18	20,5
14	11,5	24,5	20	21

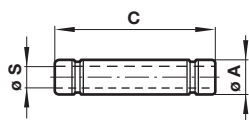


*1) Dimensions here and in the individual tables refer to the collet being in the 'IN' position.

*2) Dimensions here (minimum bore diameter) are common per tube size for all Connectors, elbows and Tees unless otherwise stated.

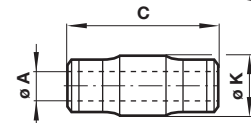
Stem tailpiece adaptor, stem to hose bore
10019


Ø A	Ø A1	Ø A2	C	Ø S	Model
4	4,5	3	34	1,8	100190403
4	6,5	5	34	2,1	100190405
5	6,5	5	35,5	2,8	100190505
6	6,5	5	36	2,8	100190605
6	8	6,5	36	4	100190606
8	8	6,5	37	4,3	100190806
8	9,5	8	38,5	5,5	100190808
10	8	6,5	41,5	4,3	100191006
10	9,5	8	43	5,5	100191008
10	12	10	44	7,3	100191010
12	9,5	8	46,5	5,5	100191208
12	12	10	46,5	7,3	100191210
12	15	12,5	47,5	9,7	100191212
14	15	12,5	47	9,7	100191412

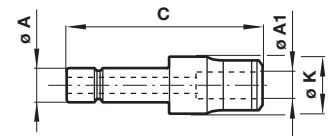
Straight stem connector
10022


Ø A	C	Ø S	Model
4	30	2,6	100220400
5	33	3,4	100220500
6	34	4	100220600
8	36	6	100220800
10	45	7,6	100221000
12	52	9,6	100221200
14	52	11,5	100221400

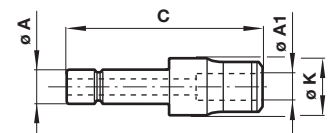
Straight connector, tube to tube
10020

 Dimensions in mm
 Projection/First angle


Ø A	C	Ø K	Model
4	30	10	100200400
5	32	11	100200500
6	33,5	12	100200600
8	35,5	14	100200800
10	44,5	17	100201000
12	51,5	20,5	100201200
14	52,5	21	100201400

Reducing/expanding connector
10023


Ø A	Ø A1	C	Ø K	Model
5	4	33,5	10	100230504
6	4	34	10	100230604
6	5	35	11	100230605
8	4	31	10	100230804
8	5	33	11	100230805
8	6	36,5	12	100230806
10	4	31	12	100231004
10	5	36,5	12	100231005
10	6	37,5	12	100231006
10	8	38	14	100231008
12	4	35	14	100231204
12	5	35	14	100231205
12	6	35	14	100231206
12	8	42	14	100231208
12	10	50	17	100231210
14	6	36,5	16	100231406
14	8	37,5	16	100231408
14	10	46,5	17	100231410
14	12	53,5	20,5	100231412

Reducing/expanding connector
10023


Ø A	Ø A1	C	Ø K	Model
4	6	35	12	100230406
6	8	37,5	14	100230608