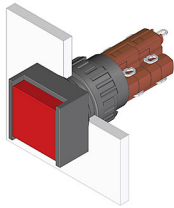


EAO – Your Expert Partner for Human Machine Interfaces

51-152.0252 - Illuminated pushbutton actuator

51-152.0252 - Illuminated pushbutton actuator



Attention: The preview is based on a sample product. This can differ from your current configuration.

Mounting

Mounting cut-out Ø 16 mm
Design raised

Front

Front dimension 18 mm x 18 mm
Front shape square
Front bezel colour black
Front bezel material Plastic

Other Attributes

Weight 0,008 kg

Operating-/Indication part

Lens illumination illuminative

IP-Rating

Front protection IP65

Connection Method

Terminal Solder

Actuator

Switching action Momentary
Housing colour black
Housing material Plastic

Switching element

Switching system Snap-action switching element
Contacts 2 NC + 2 NO
Switching current 5 A
Contact material
Switching voltage 250 V AC

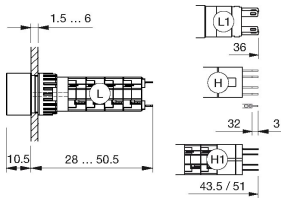
Function

Illuminated pushbutton

EAO – Your Expert Partner for Human Machine Interfaces

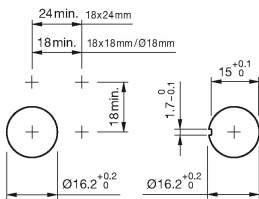
51-152.0252 - Illuminated pushbutton actuator

Dimensions

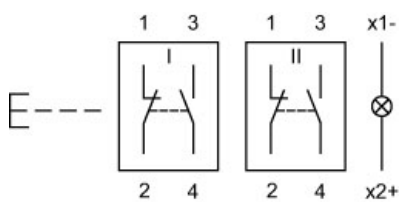


H = Universal terminal 2.0 x 0.5 mm

Mounting cut-outs



Wiring diagram



Legend

Contacts: NC = Normally closed, NO = Normally open
Switching action: B = Momentary