

Dear Customer,

With this INFINEON Technologies Information Note we would like to inform you about the following

**Optimized power terminals for all High Power modules A-series with AISiC base plate**

N° 083/16

## Optimized power terminals for all High Power modules A-series with AISiC base plate

► **Products affected:** All IHM and IHV modules with AISiC base plate  
Please refer to attached affected product list

► **Detailed Change Information:**

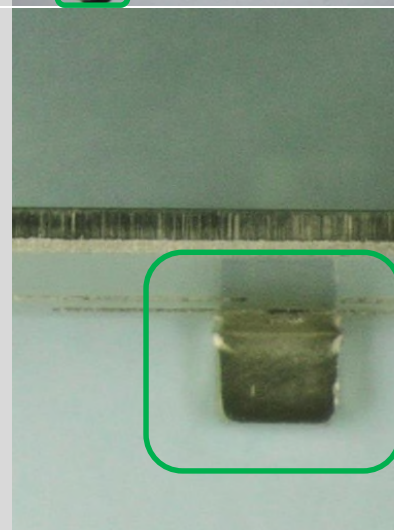
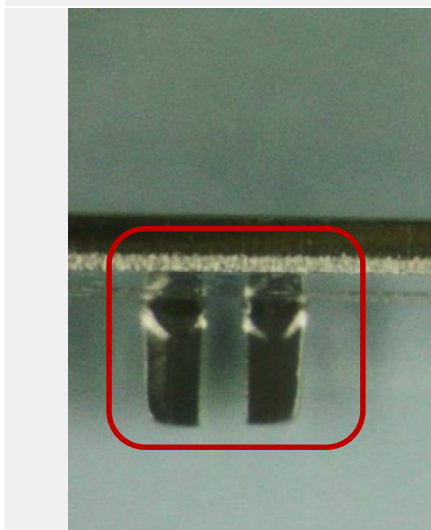
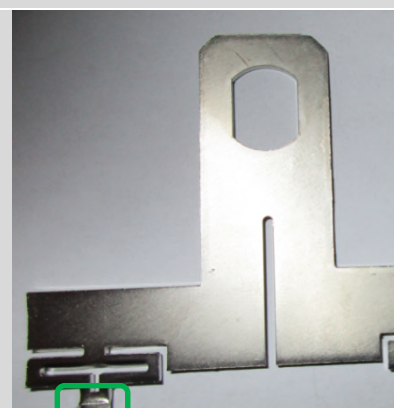
**Subject:** Change of the main terminals from opened feet to closed feet  
Both terminals Collector and Emitter will be changed

**Reason:** Optimisation of production processes

**Description:** Old



New



N° 083/16

- ▶ **Product Identification:** Product Date Code  
The exact date of implementation can be provided on request
- ▶ **Impact of Change:** The above mentioned change will have no impact on the mechanical, electrical and thermal parameters of the modules, according to JEDEC standard JESD46-C: fit, form, function and reliability
- ▶ **Attachments:** Affected product list 1\_cip083\_16.xlsx
- ▶ **Intended start of delivery:** From December 2016 onwards. During the ramp up power terminals of both types may be delivered.

If you have any questions, please do not hesitate to contact your local Sales office.