



Product Change Notification

Date Issued :	November 24, 2023	PCN Number :	514599
Reason for Change :	Change to Product		
Description of Change :	This notification is to inform you about changes that are being made to the part(s) as identified in the list. This change will not affect the Fit, Function, there is slight change in form or appearance of the parts. Or it may result in a change to the specification or raw material.		
Reason for Short Notice :	Special Request		
Assessment of Change :	First Article Inspection		
Planned Implementation Date :	December 22, 2023		
Sample Availability Date:	November 28, 2023		
Internal Molex Qualification Date :	November 30, 2023		
Last date to request Samples by Customer :	December 08, 2023		
Traceability Code Markings / Date :	Product made after planned implementation date can contain the change		

Before Picture

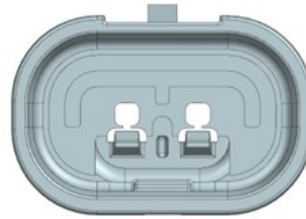
Before Modification

- Customer identified reverse mating of Squba 3.6 W/O KEY connectors.

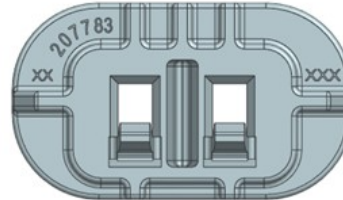
- PLUG HOUSING(2077790002/3/4)



BEFORE MODIFICATION



- RECEPTACLE HOUSING (2077830002/3/4)



Molex Confidential Information
© 2016 Molex – All Rights Reserved. Unauthorized Reproduction/Distribution is Prohibited.

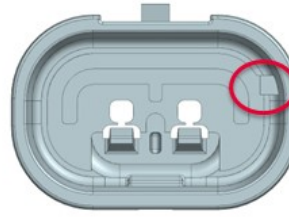
1

After Picture

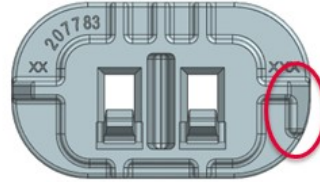
AFTER MODIFICATION

➤ To avoid this issue the below changes have been made :

- A rib has been added to PLUG HOUSING (2077790002/3/4)



- The rib has been modified in RECEPTACLE HOUSING (2077830002/3/4)



Molex Confidential Information
© 2016 Molex – All Rights Reserved. Unauthorized Reproduction/Distribution is Prohibited.

2

RELEASED

Additional Information :

- Product impact: No impact to Fit and function, slight change in Form of the product
- Part Number Impact :

PLUG HOUSING (Non-Sellable)	PLUG ASSEMBLY (Sellable)	RECEPTICAL HOUSING (Non-Sellable)		RECEPTICAL ASSEMBLY (Sellable)		
		Without Key	With KEY	Without KEY	With KEY	
2077790002	2077780002	2077830002	2077830102	2077820002	2077820102	2077820112
2077790003	2077780003	2077830003	2077830202	2077820003	2077820202	2077820212
2077790004	2077780004	2077830004	2077830302	2077820004	2077820302	2077820312
	2077780012		2077830402	2077820012	2077820402	2077820412
	2077780013		2077830502	2077820013	2077820502	2077820512
	2077780014		2077830602	2077820014	2077820602	2077820612
			2077830103		2077820103	2077820113
			2077830203		2077820203	2077820213
			2077830303		2077820303	2077820313
			2077830403		2077820403	2077820413
			2077830503		2077820503	2077820513
			2077830603		2077820603	2077820613
			2077830104		2077820104	2077820114
			2077830204		2077820204	2077820214
			2077830304		2077820304	2077820314
			2077830404		2077820404	2077820414
			2077830504		2077820504	2077820514
			2077830604		2077820604	2077820614

Molex Confidential Information
 © 2016 Molex – All Rights Reserved. Unauthorized Reproduction/Distribution is Prohibited.



3

RELEASED

You may address inquires regarding this PCN by clicking on the below link
mailto:pcn_coordinator@molex.com?subject=PCN_Notification:514599
 or contact your Local Sales Engineer.

Note: While responding, please retain " PCN Notification : **PCN Notification: 514599** " in the e-mail Subject line for faster response.

Molex, LLC
 2222 Wellington Court
 Lisle, IL 60532
 TEL (800) 786-6539
www.molex.com