

## MIRO 6.2 TIMER OFF-DELAY

IN: 24 VDC - OUT: 250 VAC/DC / 6A

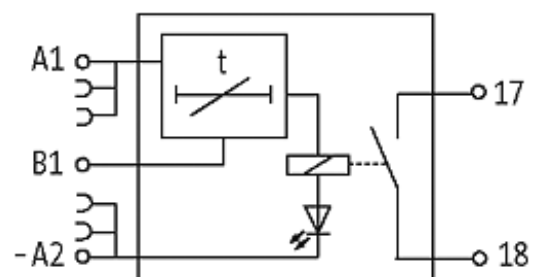
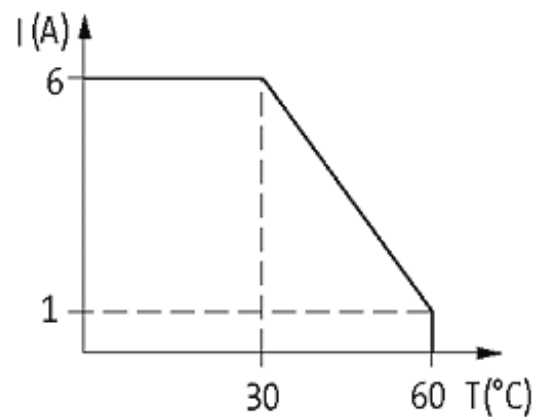
Relay output

Switch-off delay: 3...300 s

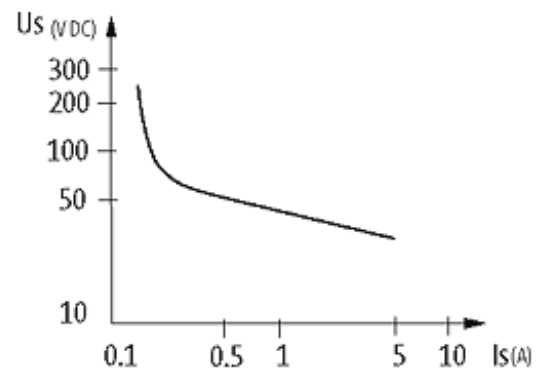
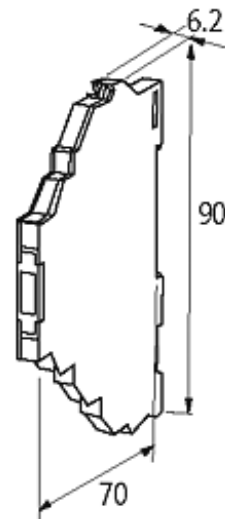
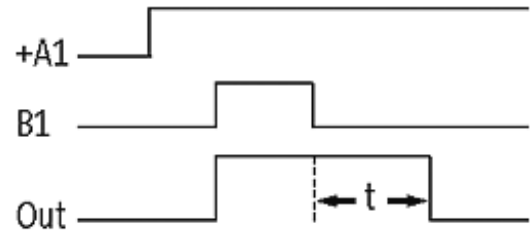
Spring clamp terminals

### [Link to Product](#)

#### Illustration

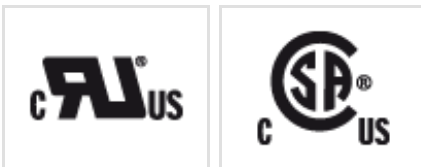


stay connected



Product may differ from Image

### Approvals



### Utilization category

AC-12	6 A (24/110/230 V AC)
AC-15	3 A (24/110/230 V AC)
DC-13	1 A (24 V DC); 0.2 A (110 V DC); 0.1 A (230 V DC)

### Input

Input voltage	24 V DC (+10 -15 %) input A
---------------	-----------------------------

The information in this brochure has been compiled with the utmost care.

Liability for the correctness completeness and topicality of the information is restricted to gross negligence. Version: 05/15

Murrelektronik GmbH | Falkenstraße 3, 71570 Oppenweiler | Fon +49 (71 91) 47-0, Fax +49 (71 91) 47-491000 | shop@murrelektronik.de | shop.murrelektronik.de

Input current	20 mA (input A)
Control voltage	24 V DC (+10 -15 %) input B
Control current	5 mA (input B)

#### General data

Mech./ elect. life	20.000.000 switching cycles/load dependent
Test isolation voltage	4 kV; safe separation (EN 60947-1)
Mounting method	DIN-rail mountable (EN 60715)
Temperature range	0...+55 °C
Dimensions H x W x D	90x12.4x65 mm

#### Output

Output voltage	max. 250 V AC/DC
Output current	max. 6 A
Min. load current	100 mA (12 V DC)
Output rating	max. 1500 VA/120 W
Switching frequency	max. 10 Hz
Contact material	Ag Sn O <sub>2</sub>
Energize/release/contact bounce time	10/15/1.5 ms

#### Commercial data

country of origin	CZ
customs tariff number	85364900
minimum order quantity	1