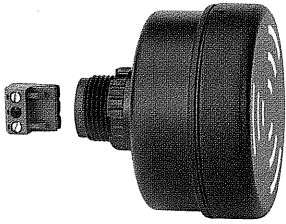


Electr. Installation Multi-Tone

- Loud installation multi-tone sounder for the 22.5 mm control panel programme
- High protection rating IP 65
- Adjustable to 8 different tones
- Adjustable sound output

TECHNICAL SPECIFICATIONS:

Dimensions (Diameter x Depth): 70 mm x 71.6 mm
Housing: PC/ABS-Blend; Deckel: PC
Sound output: max. 100 dB (sound output is adjustable on rear side when mounted)
Tone type: 8 tones adjustable on rear side of the housing



Surface housing (accessory)



Bracket (accessory)

Switch position	Waveform	Frequency	Sound level
Switch position 0		1,6 kHz	86 dB (A)
Switch position 1		1,6 kHz	86 dB (A)
Switch position 2		1,6 kHz	86 dB (A)
Switch position 3		1,6 kHz	88 dB (A)
Switch position 4		3,4 kHz	90 dB (A)
Switch position 5		3,4 kHz	100 dB (A)
Switch position 6		3,4 kHz	96 dB (A)
Switch position 7		3,4 kHz	100 dB (A)

Fixing: Installation mounting for \varnothing 22.5 mm (M 22) with anti-twist device
Connection: Connector plug with screwable connection max. 1.5 mm²
Life duration: > 5,000 hrs

ORDER SPECIFICATIONS:

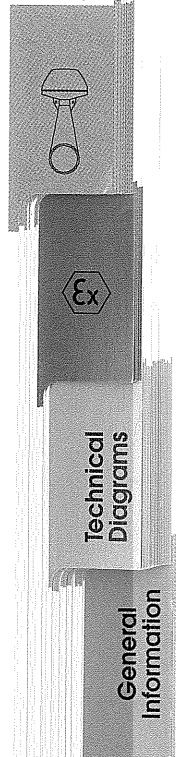
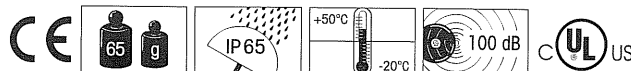
	24 V \cong	115 V ~	230 V ~
Voltage	24 V \cong	115 V ~	230 V ~
Current consumption	80 mA	40 mA	40 mA
	110 000 75	110 000 67	110 000 68

ACCESSORIES:

Bracket with protective cap (IP 54)	975 109 01
Surface housing IP 65 (single)	975 109 02
Surface housing IP 65 (double) for 1 beacon and 1 audible element	975 109 03
Surface housing IP 65 (triple) for 2 beacons and 1 audible element (see page 108)	975 109 04
Surface housing IP 65 (quadruple)	975 109 05

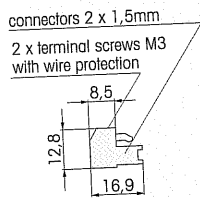
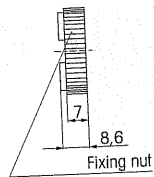
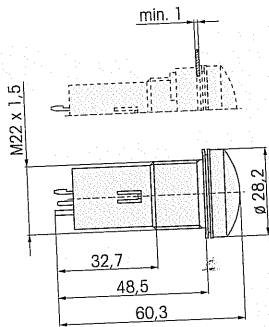
TECHNICAL DIAGRAMS

see page 140

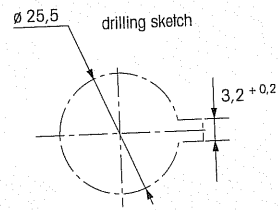
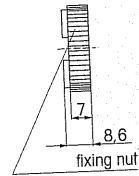
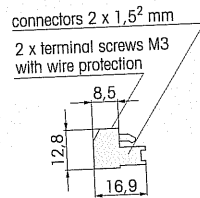
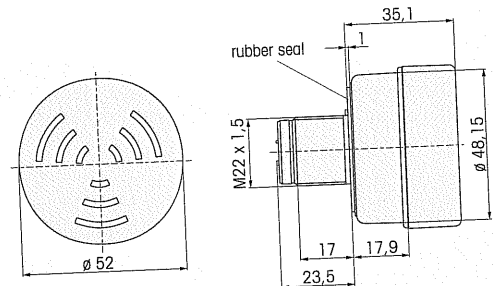


Technical Diagrams

Electronic Installation Buzzer 109



Electronic Installation Buzzer



Electronic Installation Multi-tone Sounder

