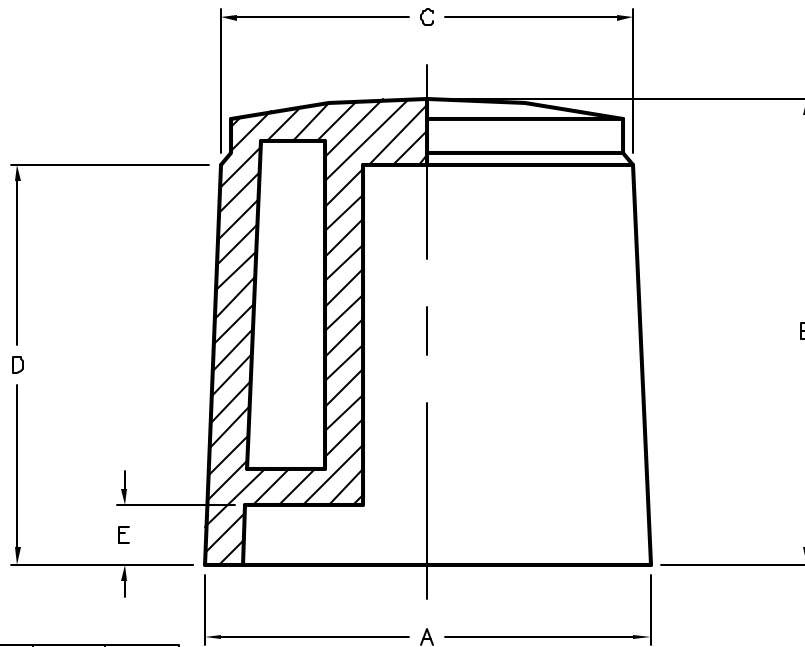
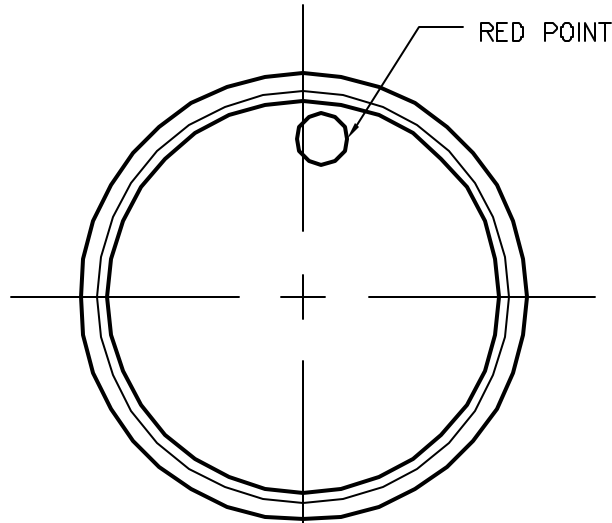




REVISIONS

DOC. NO. SPC-F004 * Effective: 7/8/02 * DCP No: 1398

DCP #	REV	DESCRIPTION	DRAWN	DATE	CHECKD	DATE	APPRVD	DATE
1933	A	RELEASED	EO	08/07/08	JN	03/24/08	JN	03/24/08



Multicomp P/N	A	B	C	D	E
MC21056	20.5	20.0	19.0	17.6	3.0
MC21057	31.0	21.0	30.0	18.5	6.5

SPECIFICATIONS:

1. Material: ABS, Plastic
2. Color: Black
3. Shaft Hole: 18 Teeth

SPC-F004.DWG

TOLERANCES: UNLESS OTHERWISE SPECIFIED, DIMENSIONS ARE FOR REFERENCE PURPOSES ONLY.	DRAWN BY:	DATE:	DRAWING TITLE:		
	EKLAS ODISH	09/07/08	Dial Type Knobs, Knurled Tapered Sides, Dot Indicator, Push On		
	CHECKED BY:	DATE:	SIZE	DWG. NO.	ELECTRONIC FILE
	Jason Nash	03/24/08	A	TA-791	TA-791.DWG
APPROVED BY:	DATE:	SCALE: NTS		U.O.M.: MILLIMETERS	REV
Jason Nash	03/24/08				A
			SHEET: 1 OF 1		

ALL RIGHTS RESERVED. NO PORTION OF THIS PUBLICATION, WHETHER IN WHOLE OR IN PART CAN BE REPRODUCED WITHOUT THE EXPRESS WRITTEN CONSENT OF SPC TECHNOLOGY. DISCLAIMER: ALL STATEMENTS AND TECHNICAL INFORMATION CONTAINED HEREIN ARE BASED UPON INFORMATION AND/OR TESTS WE BELIEVE TO BE ACCURATE AND RELIABLE. SINCE CONDITIONS OF USE ARE BEYOND OUR CONTROL, THE USER SHALL DETERMINE THE SUITABILITY OF THE PRODUCT FOR THE INTENDED USE AND ASSUME ALL RISK AND LIABILITY WHATSOEVER IN CONNECTION THEREWITH.