



CorePro LED PLS



CorePro LED PLS 5W 830 2P G23

The Philips CorePro LED PLS integrates a LED light source into a traditional fluorescent form factor. This product is the ideal solution for uplamping in general lighting applications: it meets basic lighting requirements, offers significant energy savings, and is environment-friendly.

Product data

| General Information | |
|---------------------------------------|--------------------|
| Cap-Base | G23 [G23] |
| Nominal lifetime | 30,000 hour(s) |
| Switching Cycle | 50,000 |
| Lighting Technology | LED |
| Flux measurement reference | Sphere |
| Light Technical | |
| Color Code | 830 [CCT of 3000K] |
| Beam Angle (Nom) | 120 degree(s) |
| Luminous Flux | 520 lumen |
| Color Designation | White (WH) |
| Correlated Color Temperature (Nom) | 3000 K |
| Luminous Efficacy (rated) (Nom) | 104.00 lm/W |
| Color Consistency | <6 |
| Color rendering index (CRI) | 82 |
| LLMF At End Of Nominal Lifetime (Nom) | 70 % |
| Operating and Electrical | |
| Line Frequency | 50 to 60 Hz |
| Input Frequency | 50 to 60 Hz |
| Power Consumption | 5 W |
| Starting Time (Nom) | 0.5 s |

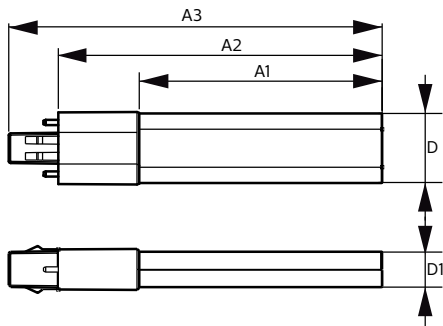
| Warm-up time to 60% light | 0.5 s |
|-------------------------------|--|
| Power Factor (Fraction) | 0.9 |
| Voltage (Nom) | 220-240 V |
| Temperature | |
| Ambient temperature range | -20 °C to 45 °C |
| T-Case Maximum (Nom) | 83 °C |
| Controls and Dimming | |
| Dimmable | No |
| Mechanical and Housing | |
| Bulb Material | Plastic |
| Product Length | 170 mm |
| Bulb Shape | Tube, single-ended |
| Approval and Application | |
| Energy Efficiency Class | F |
| Energy Saving Product | Yes |
| Approval Marks | TUV CE marking RoHS compliance KEMA Keur certificate |
| Energy Consumption kWh/1000 h | 5 kWh |
| EPREL Registration Number | 403566 |

CorePro LED PLS

| | |
|---------------------|-------------------------------|
| CE mark | Yes |
| EU RoHS compliant | Yes |
| Product Data | |
| Full product code | 871869959666800 |
| Order product name | CorePro LED PLS 5W 830 2P G23 |
| Order code | 929001926302 |

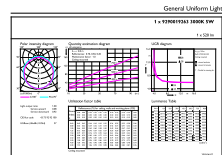
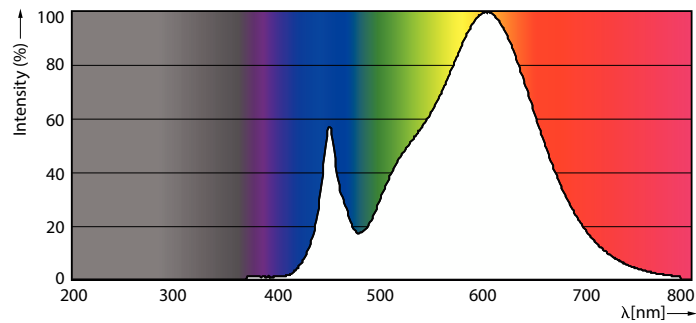
| | |
|---------------------------------|-------------------------------|
| Numerator - Quantity Per Pack | 1 |
| Numerator - Packs per outer box | 20 |
| Material number (12NC) | 929001926302 |
| Full product name | CorePro LED PLS 5W 830 2P G23 |
| EAN/UPC - Case | 87186995966675 |

Dimensional drawing



| Product | D | D1 | A1 | A2 | A3 |
|-------------------------------|---------|---------|--------|--------|--------|
| CorePro LED PLS 5W 830 2P G23 | 31.1 mm | 15.8 mm | 108 mm | 144 mm | 166 mm |

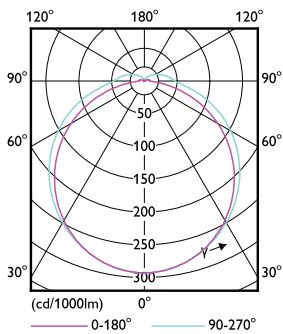
Photometric data



©2022 Philips Lighting B.V. All rights reserved. Page 11

Spectral Power Distribution Colour - CorePro LED PLS 5W 830 2P G23

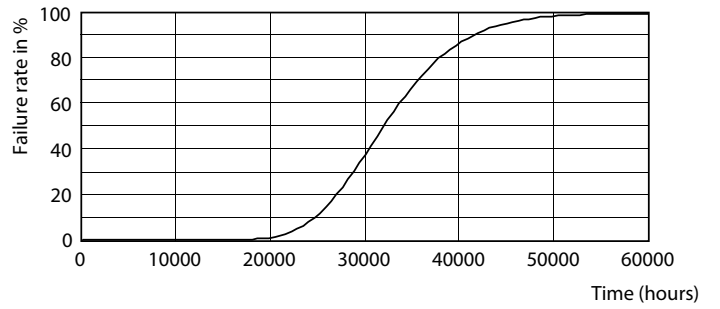
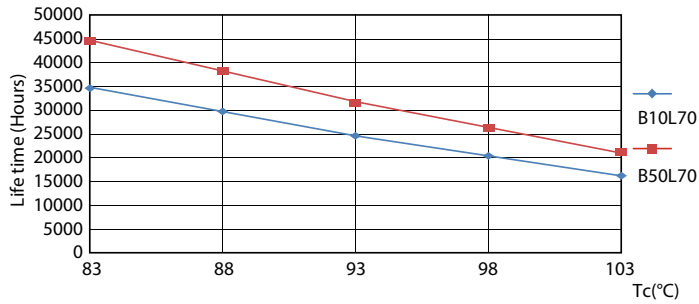
General uniform lighting - CorePro LED PLS 5W 830 2P G23



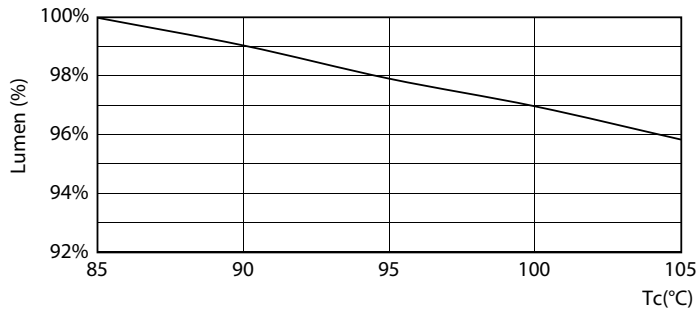
Light Distribution Diagram - CorePro LED PLS 5W 830 2P G23

CorePro LED PLS

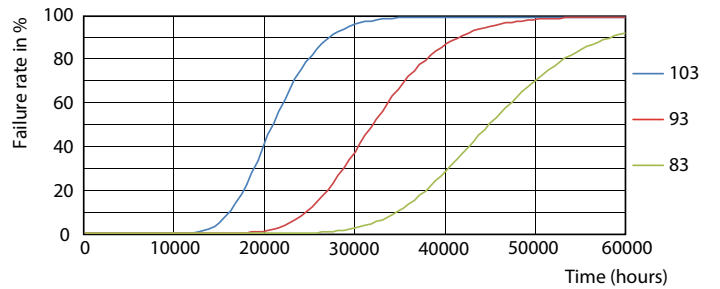
Lifetime



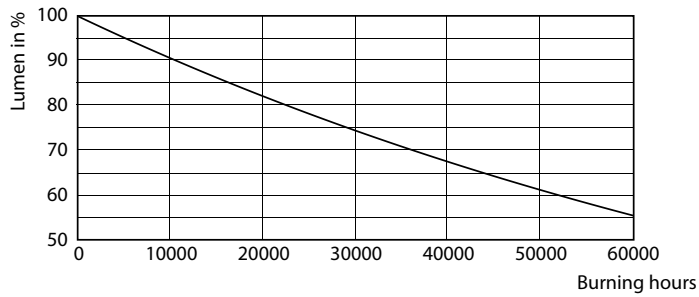
Life Expectancy Diagram - CorePro LED PLS 5W 830 2P G23



Life Expectancy Diagram - CorePro LED PLS 5W 830 2P G23



Lumen Maintenance Diagram - CorePro LED PLS 5W 830 2P G23



Life Expectancy Diagram - CorePro LED PLS 5W 830 2P G23

Lumen Maintenance Diagram - CorePro LED PLS 5W 830 2P G23

