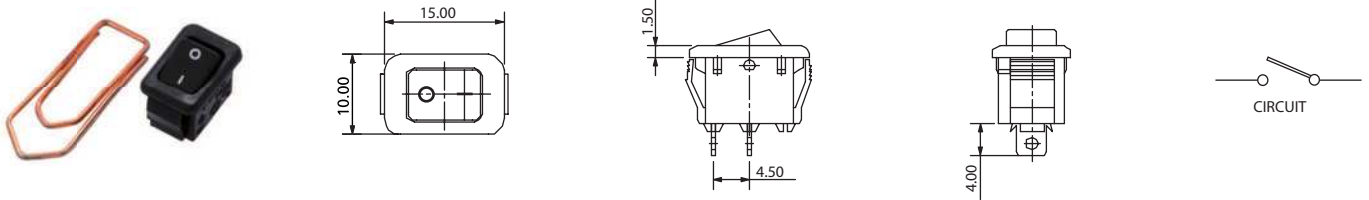


# Rocker Switches

15 x 10 mm SP Ultra Miniature Rocker Switch

RK8 Series



RK8S1D8D \_\_ ON-OFF

TERMINAL	ACTUATOR	ACTUATOR MARKING	PANEL SIZE												
D Solder Tag	8 Flat	<table border="0"> <tr> <td>A</td> <td></td> <td>D</td> <td></td> </tr> <tr> <td>B</td> <td></td> <td>E</td> <td></td> </tr> <tr> <td>C</td> <td></td> <td>F</td> <td></td> </tr> </table>	A		D		B		E		C		F		<p>PANEL CUT-OUT Snap-in mounting</p> <p>Note: The described Front Panel Mounting Hole is a proposal only and not universally valid. We recommend that customers test the applicability of the Front Panel Mounting Hole with switch samples and define the fitting Front Panel Mounting Hole measurements individually.</p>
A		D													
B		E													
C		F													

## How to order:

RK8

- |  |   |
|--|---|
| <p><b>1</b> POLES:<br/>S Single Pole</p> <p><b>2</b> SWITCHING:<br/>1 ON - OFF<br/>2 ON - ON<br/>4 MOM - OFF</p> <p><b>3</b> TERMINAL (See above drawings):<br/>D Solder Tag</p> <p><b>4</b> ACTUATOR (See above drawings):<br/>8 Flat</p> <p><b>5</b> ACTUATOR MARKING:<br/>A See above drawings<br/>B See above drawings<br/>C See above drawings<br/>D See above drawings<br/>E See above drawings<br/>F See above drawings</p> | <p><b>6</b> BASE COLOR:<br/>A Black<br/>H Grey<br/>B White</p> <p><b>7</b> ACTUATOR COLOR:<br/>A Black<br/>H Grey<br/>B White<br/>C Red</p> |
|--|---|

## General Specifications:

### FEATURES

- » Single pole mini size rocker switch
- » Appealing outlook
- » Non illuminated

### MATERIALS

- » Movable Contact: Silver alloy
- » Stationary Contact: Silver alloy
- » Terminals: Silver plated copper
- » Spring: Piano wire

### MECHANICAL

- » Temperature Range: 0°C to +100°C

### ELECTRICAL

- » Electrical Life: 10,000 cycles
- » Rating: 6A 125VAC / 3A 250VAC  
3A 250VAC
- » Initial Contact Resistance: 20m Ω max.
- » Insulation Resistance: 100M Ω min. at 500VDC