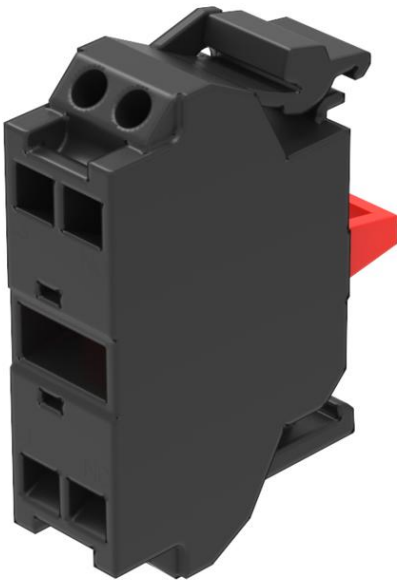


EAO – Your Expert Partner for Human Machine Interfaces

45-312.1Z40 - Switching element

45-312.1Z40 - Switching element



Attention: The preview is based on a sample product. This can differ from your current configuration.

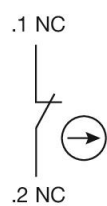
Attribute

Contacts	1 NC
Contact material	Silver
IP Protection	IP20 Terminal
Operating Voltage/Current	
Switching current	10 A
Switching system	Slow-make switching element
Switching voltage	500 V
Switching voltage kind of	AC
Terminal	Spring-type terminal
Weight	0.01 kg
Switching rating	500 V AC @ 10 A

EAO – Your Expert Partner for Human Machine Interfaces

45-312.1Z40 - Switching element

Wiring diagrams



Additional information

Contacts: NC = Normally closed, NO = Normally open
Front mounting