



LOAD FEEDER FUSELESS DIRECT START, AC 400V, SZ S0, 13...20A, AC 230V SPRING-LOADED CONNECTION FOR BUSBAR SYSTEMS 60MM TYPE OF COORDINATION 2, IQ = 150KA (ALSO FULFILLS TYPE OF COORDINATION 1) 1NO+1NC (CONTACTOR)

Figure similar

| | | |
|--|--|--|
| product brand name | | SIRIUS |
| Product designation | | non-fused load feeders 3RA2 |
| Manufacturer article number | | |
| <ul style="list-style-type: none"> • of the supplied contactor • of the supplied circuit-breakers • of the supplied busbar adapter • of the supplied link module | | 3RT2027-2AP00 3RV2021-4BA20 8US1251-5NT11 3RA2921-2AA00 |

General technical data:

| | | |
|--|----|------------|
| Insulation voltage | | |
| <ul style="list-style-type: none"> • with degree of pollution 3 Rated value | V | 690 |
| Shock resistance | | |
| <ul style="list-style-type: none"> • acc. to IEC 60068-2-27 | | 6g / 11 ms |
| Surge voltage resistance Rated value | kV | 6 |
| Type of assignment | | 2 |
| Protection class IP | | |
| <ul style="list-style-type: none"> • on the front | | IP20 |

Main circuit:

| | | |
|--|----|-----------|
| Number of poles for main current circuit | | 3 |
| Adjustable response value current of the current-dependent overload release | A | 14 ... 20 |
| Operating voltage | | |
| <ul style="list-style-type: none"> • Rated value • at AC-3 Rated value maximum | V | 690 |
| | V | 690 |
| Operating frequency Rated value | Hz | 50 ... 60 |
| Operating current | | |

| | | |
|--|-----|--|
| <ul style="list-style-type: none"> • at AC-3 <ul style="list-style-type: none"> — at 400 V Rated value | A | 15.5 |
| Operating power | | |
| <ul style="list-style-type: none"> • at AC-3 <ul style="list-style-type: none"> — at 400 V Rated value — at 500 V Rated value — at 690 V Rated value | W | 7 500 |
| | W | 11 000 |
| | W | 15 000 |
| Control circuit/ Control: | | |
| Control supply voltage with AC | | |
| <ul style="list-style-type: none"> • at 50 Hz Rated value | V | 230 |
| Apparent holding power of the magnet coil with AC | V·A | 9.8 |
| Auxiliary circuit: | | |
| Product expansion Auxiliary switch | | Yes |
| Protective and monitoring functions: | | |
| Trip class | | CLASS 10 |
| Design of the overload circuit breaker | | thermal (bimetallic) |
| Short-circuit: | | |
| Product function Short circuit protection | | Yes |
| Design of the short-circuit trip | | magnetic |
| Conditional short-circuit current (I_q) | | |
| <ul style="list-style-type: none"> • at 400 V acc. to IEC 60947-4-1 Rated value | A | 153 000 |
| Installation/ mounting/ dimensions: | | |
| mounting position | | vertical |
| Mounting type | | for snapping onto 60 mm busbar systems |
| Height | mm | 260 |
| Width | mm | 45 |
| Depth | mm | 164.9 |
| Required spacing | | |
| <ul style="list-style-type: none"> • for grounded parts <ul style="list-style-type: none"> — forwards — Backwards — upwards — at the side — downwards • for live parts <ul style="list-style-type: none"> — forwards — Backwards — upwards — downwards — at the side | mm | 10 |
| | mm | 0 |
| | mm | 30 |
| | mm | 9 |
| | mm | 10 |
| | mm | 10 |
| | mm | 0 |
| | mm | 30 |
| | mm | 10 |
| | mm | 9 |

Connections/ Terminals:

| | | |
|--|--|-------------------------|
| Type of electrical connection | | spring-loaded terminals |
| <ul style="list-style-type: none"> • for main current circuit | | |

Safety related data:

| | | |
|--|---|-------------|
| B10 value with high demand rate acc. to SN 31920 | | 1 000 000 |
| Proportion of dangerous failures | | |
| <ul style="list-style-type: none"> • with high demand rate acc. to SN 31920 | % | 73 |
| Protection against electrical shock | | finger-safe |

Mechanical data:

| | | |
|------------------------------------|--|----|
| Size of the circuit-breaker | | S0 |
| Size of load feeder | | S0 |

Ambient conditions:

| | | |
|--|----|-------------|
| Ambient temperature | | |
| <ul style="list-style-type: none"> • during operation | °C | -20 ... +60 |
| <ul style="list-style-type: none"> • during storage | °C | -50 ... +80 |
| <ul style="list-style-type: none"> • during transport | °C | -50 ... +80 |

Certificates/ approvals:

| | | | |
|---------------------------------|---------------------------------------|----------------------------------|--------------------------|
| General Product Approval | For use in hazardous locations | Declaration of Conformity | Test Certificates |
|---------------------------------|---------------------------------------|----------------------------------|--------------------------|



[Declaration of the Compliance with the order](#)

| | |
|--------------------------|--------------------------|
| Test Certificates | Shipping Approval |
|--------------------------|--------------------------|

[Type Test Certificates/Test Report](#)



| | |
|--------------------------|--------------|
| Shipping Approval | other |
|--------------------------|--------------|



[Environmental Confirmations](#)

[Declaration of Conformity](#)

[other](#)

Further information

Information- and Downloadcenter (Catalogs, Brochures,...)

<http://www.siemens.com/industrial-controls/catalogs>

Industry Mall (Online ordering system)

<http://www.siemens.com/industrymall>

Cax online generator

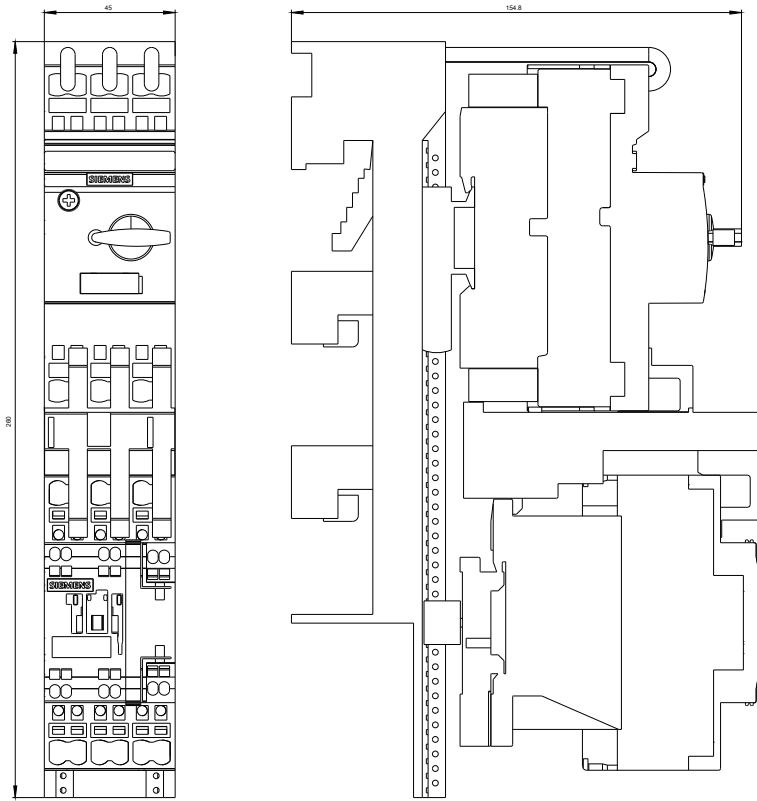
<http://support.automation.siemens.com/WW/CAXorder/default.aspx?lang=en&mfb=3RA21204BH270AP0>

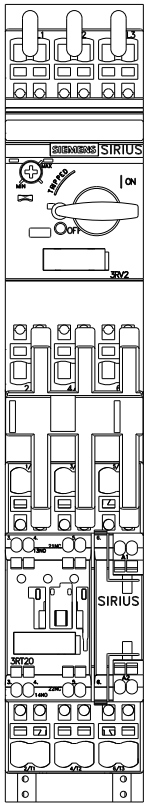
Service&Support (Manuals, Certificates, Characteristics, FAQs,...)

<http://support.automation.siemens.com/WW/view/en/3RA21204BH270AP0/all>

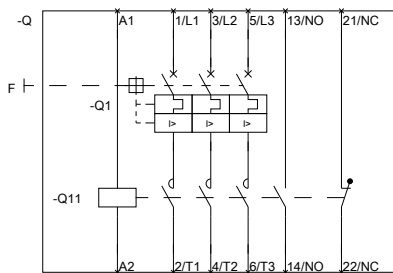
Image database (product images, 2D dimension drawings, 3D models, device circuit diagrams, EPLAN macros, ...)

http://www.automation.siemens.com/bilddb/cax_de.aspx?mfb=3RA21204BH270AP0&lang=en





DREI-PHASEN-HERABZUG, SICHERUNGSL.



DREI-PHASEN-FASZENDESSZ S0

last modified:

11.03.2015