

ST.-LIGHT ELEMENTS LED, RED, AC/DC 24V



Figure similar

General technical data:		
product brand name		SIRIUS
Product component Light source		Yes
Design of the optical signal		continous light
Type of voltage of the operating voltage		AC/DC
Operating voltage		
• 1 for DC Rated value	V	24
• 1 with AC at 50 Hz Rated value	V	24
• 1 with AC at 60 Hz Rated value	V	24
Equipment marking acc. to DIN EN 61346-2		P
Mechanical data:		
Outer diameter of the signal column element	mm	50
Lamp:		
Type of light source		LED
Ambient conditions:		
Ambient temperature during operation	°C	-20 ... +50
Protection class IP		IP54
Height	mm	67
Width	mm	52
Certificates/ approvals:		

General Product Approval	EMC	Declaration of Conformity	Shipping Approval
--------------------------	-----	---------------------------	-------------------



Further information

Information- and Downloadcenter (Catalogs, Brochures,...)

<http://www.siemens.com/industrial-controls/catalogs>

Industry Mall (Online ordering system)

<http://www.siemens.com/industrymall>

Cax online generator

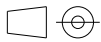
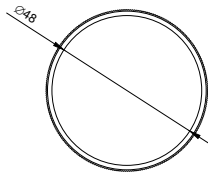
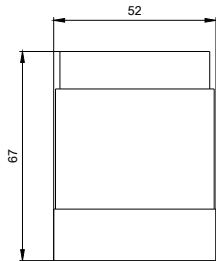
<http://support.automation.siemens.com/WW/CAXorder/default.aspx?lang=en&mlfb=8WD42205AB>

Service&Support (Manuals, Certificates, Characteristics, FAQs,...)

<https://support.industry.siemens.com/cs/ww/en/ps/8WD42205AB>

Image database (product images, 2D dimension drawings, 3D models, device circuit diagrams, EPLAN macros, ...)

http://www.automation.siemens.com/bilddb/cax_de.aspx?mlfb=8WD42205AB&lang=en



W8 4444: 8WD42-..._ALL
W8 8611:

last modified:

15.01.2015