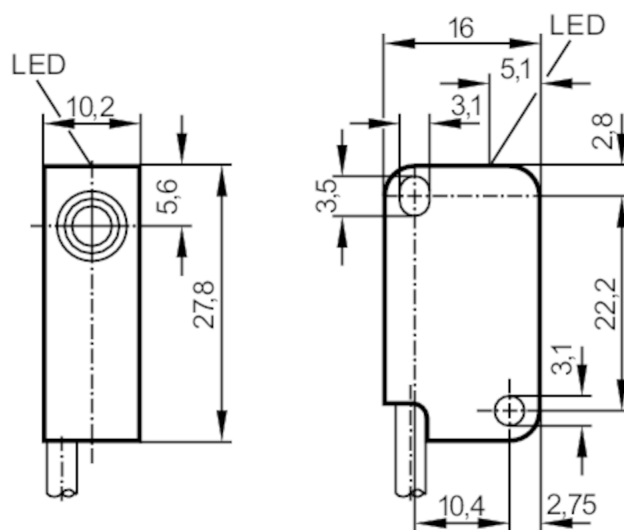




## Inductive sensor

IS-3002-BNKG/6M



## Product characteristics

Electrical design	NPN
Output function	normally closed
Sensing range [mm]	2
Housing	rectangular
Dimensions [mm]	28 x 10 x 16

## Electrical data

Operating voltage [V]	10...36 DC
Current consumption [mA]	15; (24 V)
Protection class	III
Reverse polarity protection	yes

## Outputs

Electrical design	NPN
Output function	normally closed
Max. voltage drop switching output DC [V]	2.5
Permanent current rating of switching output DC [mA]	200
Switching frequency DC [Hz]	800
Short-circuit protection	yes
Overload protection	yes

## Detection zone

Sensing range [mm]	2
Real sensing range $S_r$ [mm]	$2 \pm 10 \%$
Operating distance [mm]	0...1.6

# IS5008



## Inductive sensor

IS-3002-BNKG/6M

Accuracy / deviations			
Correction factor		steel: 1 / stainless steel: 0.7 / brass: 0.4 / aluminium: 0.3 / copper: 0.2	
Hysteresis	[% of Sr]	1...15	
Switch point drift	[% of Sr]	-10...10	
Operating conditions			
Ambient temperature		[°C]	-20...80
Protection			IP 67
Tests / approvals			
EMC	EN 61000-4-2 ESD		4 kV CD / 8 kV AD
	EN 61000-4-3 HF radiated		3 V/m
	EN 61000-4-4 Burst		2 kV
	EN 61000-4-6 HF conducted		3 V
	EN 55011		class B
MTTF	[years]	2791	
Mechanical data			
Weight	[g]	125	
Housing		rectangular	
Mounting		flush mountable	
Dimensions	[mm]	28 x 10 x 16	
Materials		PBT	
Tightening torque		[Nm]	< 0.5; (with washer)
Displays / operating elements			
Display		switching status	1 x LED, yellow
Remarks			
Pack quantity		1 pcs.	

# IS5008



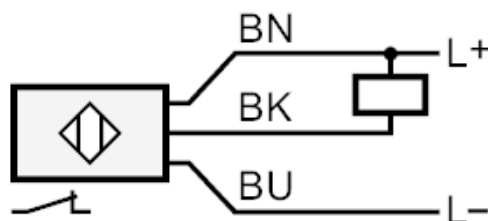
## Inductive sensor

IS-3002-BNKG/6M

### Electrical connection

Cable: 6 m, PVC; 3 x 0.14 mm<sup>2</sup>

### Connection



Core colours :

BN =	brown
BU =	blue
BK =	black