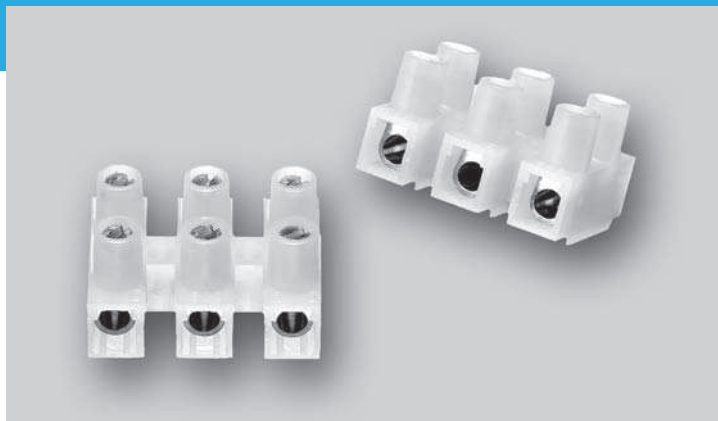


Europa Series Terminal Blocks



500-35

Connection: conductor size 0.5 - 2.5 mm² (with wire protector)
conductor size 0.5 - 6.0 mm² (without wire protector)

Fixing: by screw or rivet size Ø 3.5 mm

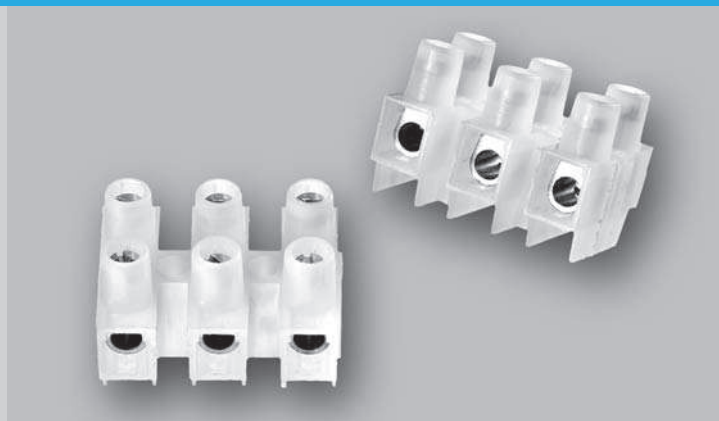
Torque screw: M3: \cup max. 0.5 Nm

Stripping length: 7 - 7.5 mm

Important approvals: VDE, UL

Accessories: slip-on fused connectors (page 81), covers (page 83), luminaires connecting box (page 84), strain reliefs and marking labels (page 85)

Upon request: 7 - 11 pole, center stop MDS, printing, different polyamides (in particular glow wire to EN 60335-1), different screws



500 K 35 with Raised Base

Connection: conductor size 0.5 - 2.5 mm² (with wire protector)
conductor size 0.5 - 6.0 mm² (without wire protector)

Fixing: by screw or rivet size Ø 3.5 mm

Torque screw: M3: \cup max. 0.5 Nm

Stripping length: 7 - 7.5 mm

Important approvals: VDE, UL

Accessories: slip-on fused connectors (page 81), covers (page 83), strain reliefs and marking labels (page 85)

Upon request: 7 - 11 pole, center stop MDS, printing, different polyamides (in particular glow wire to EN 60335-1), different screws

Description	Item	Order Number	PU	Description	Item	Order Number	PU
with Wire Protectors				with Wire Protectors			
1 pole	500/ 1 35 DS	123301	500	1 pole	500 K/ 1 35 DS	123701	500
2 pole	500/ 2 35 DS	123302	1100	2 pole	500 K/ 2 35 DS	123702	1000
3 pole	500/ 3 35 DS	123303	1000	3 pole	500 K/ 3 35 DS	123703	1000
4 pole	500/ 4 35 DS	123304	500	4 pole	500 K/ 4 35 DS	123704	400
5 pole	500/ 5 35 DS	123305	500	5 pole	500 K/ 5 35 DS	123705	500
6 pole	500/ 6 35 DS	123306	500	6 pole	500 K/ 6 35 DS	123706	500
12 pole	500/12 35 DS	123312	50	12 pole	500 K/12 35 DS	123712	40
without Wire Protectors				without Wire Protectors			
1 pole	500/ 1 35	123201	500	1 pole	500 K/ 1 35	123601	500
2 pole	500/ 2 35	123202	1100	2 pole	500 K/ 2 35	123602	1000
3 pole	500/ 3 35	123203	1000	3 pole	500 K/ 3 35	123603	1000
4 pole	500/ 4 35	123204	500	4 pole	500 K/ 4 35	123604	400
5 pole	500/ 5 35	123205	500	5 pole	500 K/ 5 35	123605	500
6 pole	500/ 6 35	123206	500	6 pole	500 K/ 6 35	123606	500
12 pole	500/12 35	123212	50	12 pole	500 K/12 35	123612	40

