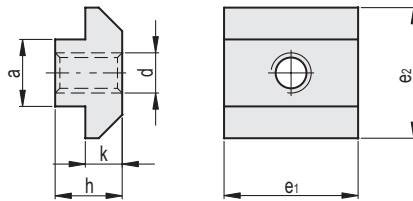
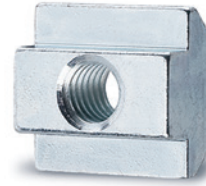
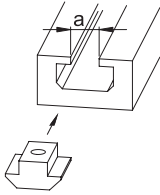


MATERIAL
Zinc-plated steel.

Application example



| Code | Description | a-0.1-0.3 | d | e1 | e2 | h | k+0.1 | △ |
|----------|--------------|-----------|----|----|------|------|-------|----|
| GN.24601 | GN 507-8-M4 | 8 | M4 | 16 | 16 | 6 | 4.2 | 8 |
| GN.24602 | GN 507-8-M5 | 8 | M5 | 16 | 16 | 6 | 4.2 | 12 |
| GN.24603 | GN 507-8-M6 | 8 | M6 | 16 | 16 | 6 | 4.2 | 11 |
| GN.24604 | GN 507-8-M8 | 8 | M8 | 16 | 16 | 6 | 4.2 | 10 |
| GN.24611 | GN 507-10-M4 | 10 | M4 | 20 | 19.5 | 10.5 | 5.5 | 13 |
| GN.24612 | GN 507-10-M5 | 10 | M5 | 20 | 19.5 | 10.5 | 5.5 | 12 |
| GN.24613 | GN 507-10-M6 | 10 | M6 | 20 | 19.5 | 10.5 | 5.5 | 11 |
| GN.24614 | GN 507-10-M8 | 10 | M8 | 20 | 19.5 | 10.5 | 5.5 | 10 |

- 1
- 2
- 3
- 4
- 5
- 6
- 7
- 8
- 9**
- 10
- 11
- 12
- 13
- 14
- 15
- 16
- 17
- 18

Machine elements