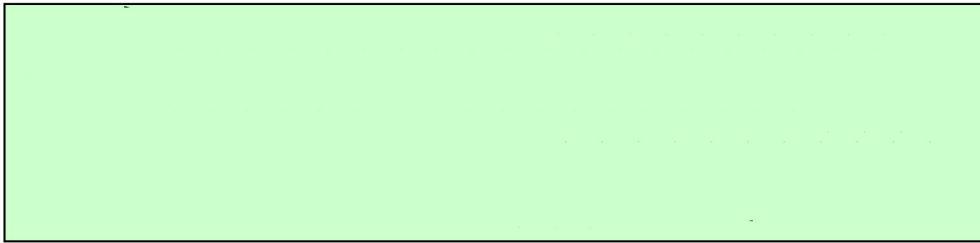


Order code	Manufacturer code	Description
88-3643	M1066	ENCAPS TRANSFORMER 230V 5VA 18V(RC)
88-3658	M1077	ENCAPS TRANSFORMER 230V 10VA 24V(RC)
88-3653	M1072	ENCAPS TRANSFORMER 230V 10VA 7.5V(RC)
88-3661	M2073	ENCAPS TRANSFORMER 230V 10VA 9V+9V(RC)
88-3662	M2074	ENCAPS TRANSFORMER 230V 10VA 12V+12V(RC)
88-3648	M2064	ENCAPS TRANSFORMER 230V 5VA 12V+12V(RC)
88-3650	M2066	ENCAPS TRANSFORMER 230V 5VA 18V+18V(RC)
88-3652	M1071	ENCAPS TRANSFORMER 230V 10VA 6V(RC)
88-3637	M2057	ENCAPS TRANSFORMER 230V 3.2VA 24V+24V RC
88-3640	M1063	ENCAPS TRANSFORMER 230V 5VA 9V(RC)
88-3647	M2063	ENCAPS TRANSFORMER 230V 5VA 9V+9V(RC)
88-3623	M2037	ENCAPS TRANSFORMER 230V 2.3VA 24V+24V RC
88-3626	M1053	ENCAPS TRANSFORMER 230V 3.2VA 9V(RC)
88-3634	M2054	ENCAPS TRANSFORMER 230V 3.2VA 12V+12V RC
88-3606	M2014	ENCAPS TRANSFORMER 230V 1.5VA 12V+12V RC
88-3609	M2017	ENCAPS TRANSFORMER 230V 1.5VA 24V+24V RC
88-3620	M2034	ENCAPS TRANSFORMER 230V 2.3VA 12V+12V RC
88-3664	M2076	ENCAPS TRANSFORMER 230V 10VA 18V+18V(RC)
88-3665	M2077	ENCAPS TRANSFORMER 230V 10VA 24V+24V(RC)
88-3601	M1016	ENCAPS TRANSFORMER 230V 1.5VA 18V(RC)
88-3659	M2071	ENCAPS TRANSFORMER 230V 10VA 6V+6V(RC)
88-3660	M2072	ENCAPS TRANSFORM 230V 10VA 7.5V+7.5V(RC)
88-3663	M2075	ENCAPS TRANSFORMER 230V 10VA 15V+15V(RC)
88-3655	M1074	ENCAPS TRANSFORMER 230V 10VA 12V(RC)
88-3656	M1075	ENCAPS TRANSFORMER 230V 10VA 15V(RC)
88-3657	M1076	ENCAPS TRANSFORMER 230V 10VA 18V(RC)
88-3644	M1067	ENCAPS TRANSFORMER 230V 5VA 24V(RC)
88-3649	M2065	ENCAPS TRANSFORMER 230V 5VA 15V+15V(RC)
88-3651	M2067	ENCAPS TRANSFORMER 230V 5VA 24V+24V(RC)
88-3587	M1006	ENCAPS TRANSFORMER 230V 0.5VA 18V(RC)
88-3641	M1064	ENCAPS TRANSFORMER 230V 5VA 12V(RC)
88-3642	M1065	ENCAPS TRANSFORMER 230V 5VA 15V(RC)
88-3635	M2055	ENCAPS TRANSFORMER 230V 3.2VA 15V+15V RC
88-3603	M2011	ENCAPS TRANSFORMER 230V 1.5VA 6V+6V(RC)
88-3636	M2056	ENCAPS TRANSFORMER 230V 3.2VA 18V+18V RC
88-3629	M1056	ENCAPS TRANSFORMER 230V 3.2VA 18V(RC)
88-3631	M2051	ENCAPS TRANSFORMER 230V 3.2VA 6V+6V(RC)
88-3632	M2052	ENCAPS TRANSFORM 230V 3.2VA 7.5V+7.5V RC
88-3624	M1051	ENCAPS TRANSFORMER 230V 3.2VA 6V(RC)
88-3625	M1052	ENCAPS TRANSFORMER 230V 3.2VA 7.5V(RC)
88-3628	M1055	ENCAPS TRANSFORMER 230V 3.2VA 15V(RC)
88-3616	M1037	ENCAPS TRANSFORMER 230V 2.3VA 24V(RC)
88-3617	M2031	ENCAPS TRANSFORMER 230V 2.3VA 6V+6V(RC)
88-3618	M2032	ENCAPS TRANSFORM 230V 2.3VA 7.5V+7.5V RC
88-3612	M1033	ENCAPS TRANSFORMER 230V 2.3VA 9V(RC)
88-3613	M1034	ENCAPS TRANSFORMER 230V 2.3VA 12V(RC)

	Page 1 of 6
The enclosed information is believed to be correct, Information may change without notice due to product improvement. Users should ensure that the product is suitable for their use. E. & O. E.	Revision A 20/02/2007

Order code	Manufacturer code	Description
88-3615	M1036	ENCAPS TRANSFORMER 230V 2.3VA 18V(RC)
88-3605	M2013	ENCAPS TRANSFORMER 230V 1.5VA 9V+9V(RC)
88-3610	M1031	ENCAPS TRANSFORMER 230V 2.3VA 6V(RC)
88-3611	M1032	ENCAPS TRANSFORMER 230V 2.3VA 7.5V(RC)
88-3597	M1012	ENCAPS TRANSFORMER 230V 1.5VA 7.5V(RC)
88-3598	M1013	ENCAPS TRANSFORMER 230V 1.5VA 9V(RC)
88-3602	M1017	ENCAPS TRANSFORMER 230V 1.5VA 24V(RC)
88-3593	M2005	ENCAPS TRANSFORMER 230V 0.5VA 15V+15V RC
88-3594	M2006	ENCAPS TRANSFORMER 230V 0.5VA 18V+18V RC
88-3596	M1011	ENCAPS TRANSFORMER 230V 1.5VA 6V(RC)
88-3590	M2002	ENCAPS TRANSFORM 230V 0.5VA 7.5V+7.5V RC
88-3591	M2003	ENCAPS TRANSFORMER 230V 0.5VA 9V+9V(RC)
88-3592	M2004	ENCAPS TRANSFORMER 230V 0.5VA 12V+12V RC
88-3588	M1007	ENCAPS TRANSFORMER 230V 0.5VA 24V(RC)
88-3589	M2001	ENCAPS TRANSFORMER 230V 0.5VA 6V+6V(RC)
88-3585	M1004	ENCAPS TRANSFORMER 230V 0.5VA 12V(RC)
88-3645	M2061	ENCAPS TRANSFORMER 230V 5VA 6V+6V(RC)
88-3584	M1003	ENCAPS TRANSFORMER 230V 0.5VA 9V(RC)
88-3586	M1005	ENCAPS TRANSFORMER 230V 0.5VA 15V(RC)
88-3627	M1054	ENCAPS TRANSFORMER 230V 3.2VA 12V(RC)
88-3633	M2053	ENCAPS TRANSFORMER 230V 3.2VA 9V+9V(RC)
88-3639	M1062	ENCAPS TRANSFORMER 230V 5VA 7.5V(RC)
88-3608	M2016	ENCAPS TRANSFORMER 230V 1.5VA 18V+18V RC
88-3621	M2035	ENCAPS TRANSFORMER 230V 2.3VA 15V+15V RC
88-3622	M2036	ENCAPS TRANSFORMER 230V 2.3VA 18V+18V RC
88-3582	M1001	ENCAPS TRANSFORMER 230V 0.5VA 6V(RC)
88-3583	M1002	ENCAPS TRANSFORMER 230V 0.5VA 7.5V(RC)
88-3607	M2015	ENCAPS TRANSFORMER 230V 1.5VA 15V+15V RC



Standard Encapsulated P.C.B. Mounting
Transformers 0.5VA To 55VA
Fully Approved

A comprehensive range of high quality miniature PCB mounting encapsulated mains transformers, with 230v primary windings and a choice of single or twin secondary windings, which can be connected in series / parallel or centre tapped configurations to provide a wide range output voltage / current combinations.

The transformers in the ranges 0.5VA to 2.6VA (ta 70°C) are inherently short circuit proof and all types are certificated, designed and tested to meet the requirements of EN61558 / VDE0570 / ENEC10 / CSA / UL. Manufactured using split bobbin construction and vacuum encapsulation.



**VDE/SEV/UL/CSA/ENEC
Certification Available**

Encapsulated P.C.B Fully Mounting Transformers 0.5VA to 55VA

Single Secondary Winding						Twin Secondary Winding					
VA Rating	Input Volts	Output Volts (RMS)	Pin Connections Pry / Sec	Pin Layout Drawing	Part Number	VA Rating	Input Volts	Output Volts (RMS)	Pin Connections Pry / Sec / Sec	Pin Layout Drawing	Part Number
EI30x5 0.5VA	230v	6v	1+5 / 7+9	1	M1001	EI30x5 0.5VA	230v	6v + 6v	1+5 / 6 + 7 / 9+10	1	M2001
	230v	7.5v	1+5 / 7+9	1	M1002		230v	7.5v + 7.5v	1+5 / 6 + 7 / 9+10	1	M2002
	230v	9v	1+5 / 7+9	1	M1003		230v	9v + 9v	1+5 / 6 + 7 / 9+10	1	M2003
	230v	12v	1+5 / 7+9	1	M1004		230v	12v + 12v	1+5 / 6 + 7 / 9+10	1	M2004
	230v	15v	1+5 / 7+9	1	M1005		230v	15v + 15v	1+5 / 6 + 7 / 9+10	1	M2005
	230v	18v	1+5 / 7+9	1	M1006		230v	18v + 18v	1+5 / 6 + 7 / 9+10	1	M2006
	230v	24v	1+5 / 7+9	1	M1007		230v	24v + 24v	1+5 / 6 + 7 / 9+10	1	M2007
EI30x12.5 1.5VA	230v	6v	1+5 / 7+9	1	M1011	EI30x12.5 1.5VA	230v	6v + 6v	1+5 / 6 + 7 / 9+10	1	M2011
	230v	7.5v	1+5 / 7+9	1	M1012		230v	7.5v + 7.5v	1+5 / 6 + 7 / 9+10	1	M2012
	230v	9v	1+5 / 7+9	1	M1013		230v	9v + 9v	1+5 / 6 + 7 / 9+10	1	M2013
	230v	12v	1+5 / 7+9	1	M1014		230v	12v + 12v	1+5 / 6 + 7 / 9+10	1	M2014
	230v	15v	1+5 / 7+9	1	M1015		230v	15v + 15v	1+5 / 6 + 7 / 9+10	1	M2015
	230v	18v	1+5 / 7+9	1	M1016		230v	18v + 18v	1+5 / 6 + 7 / 9+10	1	M2016
	230v	24v	1+5 / 7+9	1	M1017		230v	24v + 24v	1+5 / 6 + 7 / 9+10	1	M2017
EI30x5 2.0VA	230v	6v	1+5 / 7+9	1	M1021	EI30x5 2.0VA	230v	6v + 6v	1+5 / 6 + 7 / 9+10	1	M2021
	230v	7.5v	1+5 / 7+9	1	M1022		230v	7.5v + 7.5v	1+5 / 6 + 7 / 9+10	1	M2022
	230v	9v	1+5 / 7+9	1	M1023		230v	9v + 9v	1+5 / 6 + 7 / 9+10	1	M2023
	230v	12v	1+5 / 7+9	1	M1024		230v	12v + 12v	1+5 / 6 + 7 / 9+10	1	M2024
	230v	15v	1+5 / 7+9	1	M1025		230v	15v + 15v	1+5 / 6 + 7 / 9+10	1	M2025
	230v	18v	1+5 / 7+9	1	M1026		230v	18v + 18v	1+5 / 6 + 7 / 9+10	1	M2026
	230v	24v	1+5 / 7+9	1	M1027		230v	24v + 24v	1+5 / 6 + 7 / 9+10	1	M2027
EI30x15.5 2.3VA	230v	6v	1+5 / 7+9	1	M1031	EI30x15.5 2.3VA	230v	6v + 6v	1+5 / 6 + 7 / 9+10	1	M2031
	230v	7.5v	1+5 / 7+9	1	M1032		230v	7.5v + 7.5v	1+5 / 6 + 7 / 9+10	1	M2032
	230v	9v	1+5 / 7+9	1	M1033		230v	9v + 9v	1+5 / 6 + 7 / 9+10	1	M2033
	230v	12v	1+5 / 7+9	1	M1034		230v	12v + 12v	1+5 / 6 + 7 / 9+10	1	M2034
	230v	15v	1+5 / 7+9	1	M1035		230v	15v + 15v	1+5 / 6 + 7 / 9+10	1	M2035
	230v	18v	1+5 / 7+9	1	M1036		230v	18v + 18v	1+5 / 6 + 7 / 9+10	1	M2036
	230v	24v	1+5 / 7+9	1	M1037		230v	24v + 24v	1+5 / 6 + 7 / 9+10	1	M2037
EI30x24 2.6VA	230v	6v	1+5 / 7+9	1	M1041	EI30x24 2.6VA	230v	6v + 6v	1+5 / 6 + 7 / 9+10	1	M2041
	230v	7.5v	1+5 / 7+9	1	M1042		230v	7.5v + 7.5v	1+5 / 6 + 7 / 9+10	1	M2042
	230v	9v	1+5 / 7+9	1	M1043		230v	9v + 9v	1+5 / 6 + 7 / 9+10	1	M2043
	230v	12v	1+5 / 7+9	1	M1044		230v	12v + 12v	1+5 / 6 + 7 / 9+10	1	M2044
	230v	15v	1+5 / 7+9	1	M1045		230v	15v + 15v	1+5 / 6 + 7 / 9+10	1	M2045
	230v	18v	1+5 / 7+9	1	M1046		230v	18v + 18v	1+5 / 6 + 7 / 9+10	1	M2046
	230v	24v	1+5 / 7+9	1	M1047		230v	24v + 24v	1+5 / 6 + 7 / 9+10	1	M2047
EI38x13.6 3.2VA	230v	6v	1+5 / 7+9	1	M1051	EI38x13.6 3.2VA	230v	6v + 6v	1+5 / 6 + 7 / 9+10	1	M2051
	230v	7.5v	1+5 / 7+9	1	M1052		230v	7.5v + 7.5v	1+5 / 6 + 7 / 9+10	1	M2052
	230v	9v	1+5 / 7+9	1	M1053		230v	9v + 9v	1+5 / 6 + 7 / 9+10	1	M2053
	230v	12v	1+5 / 7+9	1	M1054		230v	12v + 12v	1+5 / 6 + 7 / 9+10	1	M2054
	230v	15v	1+5 / 7+9	1	M1055		230v	15v + 15v	1+5 / 6 + 7 / 9+10	1	M2055
	230v	18v	1+5 / 7+9	1	M1056		230v	18v + 18v	1+5 / 6 + 7 / 9+10	1	M2056
	230v	24v	1+5 / 7+9	1	M1057		230v	24v + 24v	1+5 / 6 + 7 / 9+10	1	M2057
EI42x14.8 5VA	230v	6v	1+5 / 7+9	1	M1061	EI42x14.8 5VA	230v	6v + 6v	1+5 / 6 + 7 / 9+10	1	M2061
	230v	7.5v	1+5 / 7+9	1	M1062		230v	7.5v + 7.5v	1+5 / 6 + 7 / 9+10	1	M2062
	230v	9v	1+5 / 7+9	1	M1063		230v	9v + 9v	1+5 / 6 + 7 / 9+10	1	M2063
	230v	12v	1+5 / 7+9	1	M1064		230v	12v + 12v	1+5 / 6 + 7 / 9+10	1	M2064
	230v	15v	1+5 / 7+9	1	M1065		230v	15v + 15v	1+5 / 6 + 7 / 9+10	1	M2065
	230v	18v	1+5 / 7+9	1	M1066		230v	18v + 18v	1+5 / 6 + 7 / 9+10	1	M2066
	230v	24v	1+5 / 7+9	1	M1067		230v	24v + 24v	1+5 / 6 + 7 / 9+10	1	M2067

Encapsulated P.C.B Fully Mounting Transformers 0.5VA to 55VA

Single Secondary Winding						Twin Secondary Winding						
VA Rating	Input Volts	Output Volts (RMS)	Pin Connections Pry / Sec	Pin Layout Drawing	Part Number	VA Rating	Input Volts	Output Volts (RMS)	Pin Connections / Sec / Sec	Pry	Pin Layout Drawing	Part Number
EI48x16.8 10VA	230v	6v	1+ 6 / 8 + 11	2	M1071	EI48x16.8 10VA	230v	6v + 6v	1+ 6 / 7+ 8 / 11+12		2	M2071
	230v	7.5v	1+ 6 / 8 + 11	2	M1072		230v	7.5v + 7.5v	1+ 6 / 7+ 8 / 11+12		2	M2072
	230v	9v	1+ 6 / 8 + 11	2	M1073		230v	9v + 9v	1+ 6 / 7+ 8 / 11+12		2	M2073
	230v	12v	1+ 6 / 8 + 11	2	M1074		230v	12v + 12v	1+ 6 / 7+ 8 / 11+12		2	M2074
	230v	15v	1+ 6 / 8 + 11	2	M1075		230v	15v + 15v	1+ 6 / 7+ 8 / 11+12		2	M2075
	230v	18v	1+ 6 / 8 + 11	2	M1076		230v	18v + 18v	1+ 6 / 7+ 8 / 11+12		2	M2076
	230v	24v	1+ 6 / 8 + 11	2	M1077		230v	24v + 24v	1+ 6 / 7+ 8 / 11+12		2	M2077
EI54x18.8 16VA	230v	6v	1+ 5 / 7+ 9	3	M1081	EI54x18.8 16VA	230v	6v + 6v	1+5 / 6 + 7 / 9+10		3	M2081
	230v	7.5v	1+ 5 / 7+ 9	3	M1082		230v	7.5v + 7.5v	1+5 / 6 + 7 / 9+10		3	M2082
	230v	9v	1+ 5 / 7+ 9	3	M1083		230v	9v + 9v	1+5 / 6 + 7 / 9+10		3	M2083
	230v	12v	1+ 5 / 7+ 9	3	M1084		230v	12v + 12v	1+5 / 6 + 7 / 9+10		3	M2084
	230v	15v	1+ 5 / 7+ 9	3	M1085		230v	15v + 15v	1+5 / 6 + 7 / 9+10		3	M2085
	230v	18v	1+ 5 / 7+ 9	3	M1086		230v	18v + 18v	1+5 / 6 + 7 / 9+10		3	M2086
	230v	24v	1+ 5 / 7+ 9	3	M1087		230v	24v + 24v	1+5 / 6 + 7 / 9+10		3	M2087
EI66x23 35VA	230v	6v	1+ 8 / 11+ 14	4	M1091	EI66x23 35VA	230v	6v + 6v	1+8 / 9+10 / 15+16		4	M2091
	230v	7.5v	1+ 8 / 11+ 14	4	M1092		230v	7.5v + 7.5v	1+8 / 9+10 / 15+16		4	M2092
	230v	9v	1+ 8 / 11+ 14	4	M1093		230v	9v + 9v	1+8 / 9+10 / 15+16		4	M2093
	230v	12v	1+ 8 / 11+ 14	4	M1094		230v	12v + 12v	1+8 / 9+10 / 15+16		4	M2094
	230v	15v	1+ 8 / 11+ 14	4	M1095		230v	15v + 15v	1+8 / 9+10 / 15+16		4	M2095
	230v	18v	1+ 8 / 11+ 14	4	M1096		230v	18v + 18v	1+8 / 9+10 / 15+16		4	M2096
	230v	24v	1+ 8 / 11+ 14	4	M1097		230v	24v + 24v	1+8 / 9+10 / 15+16		4	M2097
EI66x34 55VA	230v	6v	1+ 8 / 11+ 14	4	M1101	EI66x34 55VA	230v	6v + 6v	1+8 / 9+10 / 15+16		4	M2101
	230v	7.5v	1+ 8 / 11+ 14	4	M1102		230v	7.5v + 7.5v	1+8 / 9+10 / 15+16		4	M2102
	230v	9v	1+ 8 / 11+ 14	4	M1103		230v	9v + 9v	1+8 / 9+10 / 15+16		4	M2103
	230v	12v	1+ 8 / 11+ 14	4	M1104		230v	12v + 12v	1+8 / 9+10 / 15+16		4	M2104
	230v	15v	1+ 8 / 11+ 14	4	M1105		230v	15v + 15v	1+8 / 9+10 / 15+16		4	M2105
	230v	18v	1+ 8 / 11+ 14	4	M1106		230v	18v + 18v	1+8 / 9+10 / 15+16		4	M2106
	230v	24v	1+ 8 / 11+ 14	4	M1107		230v	24v + 24v	1+8 / 9+10 / 15+16		4	M2107

For conformance reasons transformers with 2x15V & 2x24v outputs should not have their secondaries connected in series.

Transformers with different input and output voltages are available to meet customer's specific requirements. Samples can be supplied within 3 to 7 days. Please contact our sales department for further details or sample requests.

Dimensions

TEMPERATURE CLASS B ta40deg/C		0.6VA	1.8VA	2.4VA	2.8VA	3.4VA						
TEMPERATURE CLASS B ta70deg/C		0.5VA	1.5VA	2.0VA	2.3VA	2.6VA	3.2VA	5.0VA	10VA	16VA	34VA	55VA
WIDTH	A	32.5	32.5	32.5	32.5	32.5	41	44.5	51	56.5	70	70
LENGTH	B	27.5	27.5	27.5	27.5	27.5	34.5	37.7	43.5	48.8	61.2	61.2
HEIGHT	C	15.3	24	26.5	29.5	34.8	27.8	32.5	38	42	49	60
	D	11.5	20	22.5	25.5	31	23	25.7	30.5	35	40	51
	E	20	20	20	20	20	20	25	25	35	35	35
PIN ROW SEPARATION	F	20	20	20	20	20	25	27.5	27.5	30	35	35
MOUNTING DIMENSIONS	G								60	65	77.5	77.5
MOUNTING DIMENSIONS	L									37.5	47.5	47.5
NO' OF MOUNTING LUGS									2	4	4	4
MOUNTING HOLE SIZE	I								4.2	4.2	4.2	4.2
EXTREME DIMENSION	H								68.5	74.6	87	87
PIN DIAMETER	J											
WEIGHT	Kg	0.04	0.07	0.10	0.11	0.14	0.14	0.16	0.24	0.41	0.82	1.10
TRANSFORMER DIAGRAM		A	A	A	A	A	A	A	B	C	D	D

Encapsulated P.C.B Fully Mounting Transformers 0.5VA to 55VA

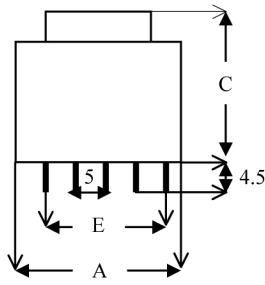


DIAGRAM - A

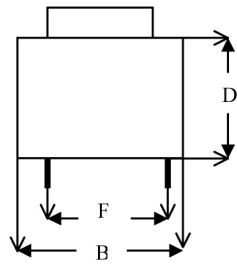


DIAGRAM - B

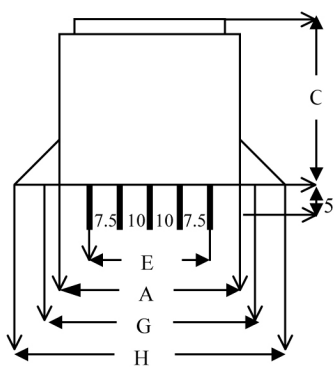
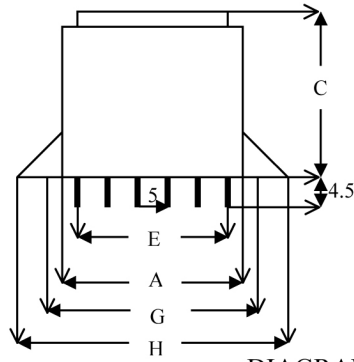


DIAGRAM - C

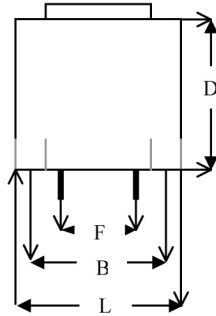
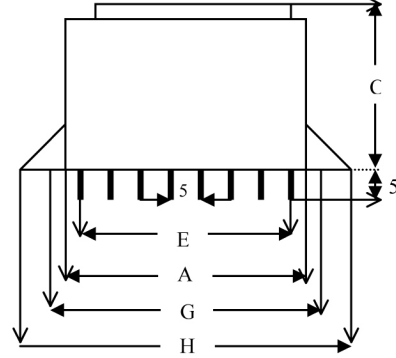
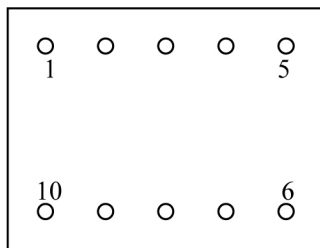


DIAGRAM - D

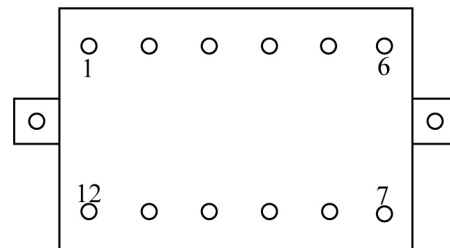


DIMENSIONS (MM)

PIN-OUT CONNECTIONS



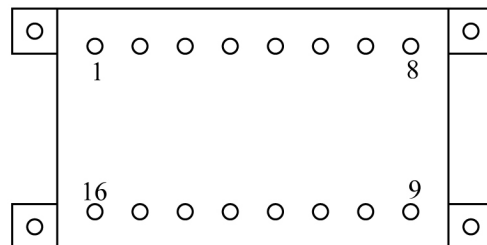
0-5VA TO 5VA (A)



10VA (B)



16VA (C)



35VA AND 55VA (D)