



SIRIUS POSITION SWITCH, PLASTIC 50MM, INCREASED CORROSION PROTECTION, DEVICE CONNECTION 2X (M20X1.5) 1NO/1NC SNAP-ACTION CONTACT, ADJUSTABLE LENGTH TWIST-LEVER, STAINLESS STEEL LEVER WITH PLASTIC ROLLER 19MM, FUNCTIONAL AT -40 DEGREES, SHOCK-AND VIBRATION TEST ACC.TO EN61373, CATEGORY 1B

|  |  |  |
|--|--|--|
| Product designation  |  | standard position switch   |
| <b>Manufacturer article number</b>   |  |  |
| <ul style="list-style-type: none"> <li>• of the supplied basic switch</li> <li>• of the supplied actuator head for position switches</li> <li>• of the supplied operating lever</li> </ul> |  | <a href="#">3SE5242-0HC05-1AJ0</a><br><a href="#">3SE5000-0AK00-1AJ0</a><br><a href="#">3SE5000-0AA62-1AJ0</a> |

| General technical data:  |    |              |
|--|----|--------------|
| <b>Product function</b>  |    |              |
| <ul style="list-style-type: none"> <li>• positive opening</li> </ul>   |    | Yes          |
| <b>Insulation voltage</b>  |    |              |
| <ul style="list-style-type: none"> <li>• Rated value</li> </ul>  | V  | 400          |
| <b>Degree of pollution</b>   |    | class 3      |
| <b>Shock resistance</b>  |    | 30g / 11 ms  |
| <b>Vibration resistance</b>  |    | 0.35 mm / 5g |
| <b>Surge voltage resistance Rated value</b>  | kV | 6            |
| <b>Mechanical service life (switching cycles)</b>  |    |              |
| <ul style="list-style-type: none"> <li>• typical</li> </ul>  |    | 15 000 000   |
| <b>Electrical endurance (switching cycles)</b>   |    |              |
| <ul style="list-style-type: none"> <li>• at AC-15 at 230 V typical</li> </ul>  |    | 100 000      |
| <b>Electrical endurance (switching cycles) with contactor 3RH11, 3RT1016, 3RT1017, 3RT1024, 3RT1025, 3RT1026 typical</b> |    | 10 000 000   |
| <b>Electrical operating cycles in one hour with contactor 3RH11, 3RT1016, 3RT1017, 3RT1024, 3RT1025, 3RT1026</b>         |    | 6 000        |
| <b>Thermal current</b>   | A  | 6            |

|   |     |            |
|---|-----|------------|
| <b>Material of the enclosure of the switch head</b> |     | plastic    |
| <b>Protection class IP</b>                          |     | IP66/IP67  |
| <b>Equipment marking</b>                            |     |            |
| • acc. to DIN EN 61346-2                            |     | B          |
| • acc. to DIN EN 81346-2                            |     | B          |
| <b>Active principle</b>                             |     | mechanical |
| <b>Repeat accuracy</b>                              | mm  | 0.05       |
| Explosion protection category for dust              |     | none       |
| Explosion protection category for gas               |     | none       |
| Minimum actuating torque in activation direction    | N·m | 0.25       |
| <b>Operating current at AC-15</b>                   |     |            |
| • at 230 V Rated value                              | A   | 6          |
| • at 400 V Rated value                              | A   | 4          |
| <b>Operating current</b>                            |     |            |
| • at DC-13 at 125 V Rated value                     | A   | 0.55       |
| • at DC-13 at 400 V Rated value                     | A   | 0.1        |
| <b>Operating current</b>                            |     |            |
| • at DC-13  |     |            |
| — at 24 V Rated value                               | A   | 3          |

#### Enclosure:

|   |  |             |
|---|--|-------------|
| <b>Design of the housing</b>                  |  | block, wide |
| <b>Material of the enclosure</b>              |  | plastic     |
| <b>Coating of the enclosure</b>               |  | Other types |
| <b>Design of the housing acc. to standard</b> |  | No          |

#### Drive Head:

|  |  |  |
|--|--|--|
| <b>Design of the operating mechanism</b> |  | metal lever, adjustable length with closing shape, 100 mm long, plastic roller 19 mm |
| <b>Standard-compliant actuator head</b>  |  | EN 50047, design A   |
| <b>Shape of the switch head</b>          |  | roller   |
| <b>Design of the switching function</b>  |  | positive opening, integrated   |

#### Connections/ Terminals:

|  |  |   |
|--|--|---|
| <b>Type of electrical connection</b>               |  | screw-type terminals  |
| <b>Type of connectable conductor cross-section</b> |  |   |
| • solid  |  | 1x (0.5 ... 1.5 mm <sup>2</sup> ), 2x (0.5 ... 0.75 mm <sup>2</sup> ) |
| • finely stranded with core end processing         |  | 1x (0.5 ... 1.5 mm <sup>2</sup> ), 2x (0.5 ... 0.75 mm <sup>2</sup> ) |
| • finely stranded without core end processing      |  | 1x (0.5 ... 1.5 mm <sup>2</sup> ), 2x (0.5 ... 0.75 mm <sup>2</sup> ) |
| • for AWG conductors                               |  |   |
| — solid  |  | 1x (20 ... 16), 2x (20 ... 18)  |
| — stranded   |  | 1x (20 ... 16), 2x (20 ... 18)  |

#### Mechanical data:

|                         |  |                |
|-------------------------|--|----------------|
| <b>Cable entry type</b> |  | 1x (M20 x 1.5) |
|-------------------------|--|----------------|

### Communication/ Protocol:

Design of the interface

without

### Ambient conditions:

Ambient temperature

- during operation
- during storage

°C

-40 ... +85

°C

-40 ... +90

### Installation/ mounting/ dimensions:

mounting position

any

Mounting type

screw fixing

### Certificates/ approvals:

General Product Approval

Declaration of  
Conformity

Test  
Certificates



CCC



CSA



UL



EG-Konf.

[Special Test  
Certificate](#)

other

[Confirmation](#)

### Further information

Information- and Downloadcenter (Catalogs, Brochures,...)

<http://www.siemens.com/industrial-controls/catalogs>

Industry Mall (Online ordering system)

<http://www.siemens.com/industrymall>

Cax online generator

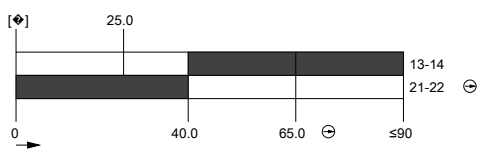
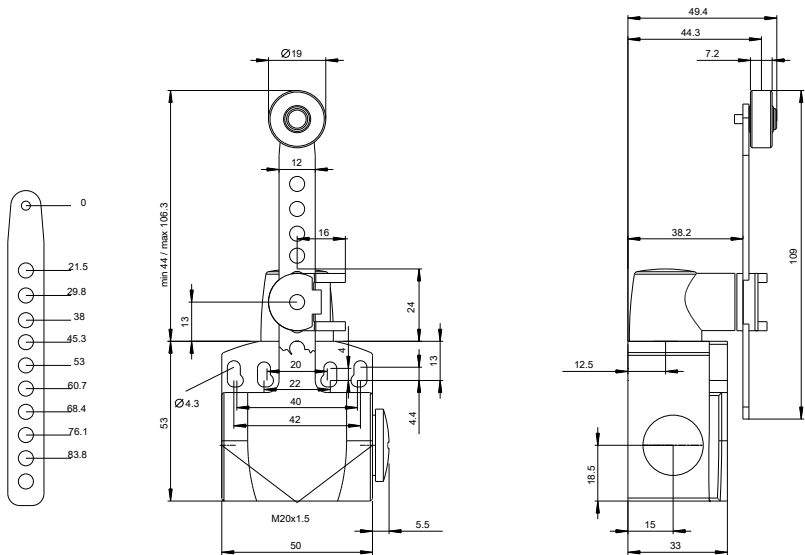
<http://support.automation.siemens.com/WW/CAXorder/default.aspx?lang=en&mlfb=3SE52420HK621AJ0>

Service&Support (Manuals, Certificates, Characteristics, FAQs,...)

<http://support.automation.siemens.com/WW/view/en/3SE52420HK621AJ0/all>

Image database (product images, 2D dimension drawings, 3D models, device circuit diagrams, EPLAN macros, ...)

[http://www.automation.siemens.com/bilddb/cax\\_de.aspx?mlfb=3SE52420HK621AJ0&lang=en](http://www.automation.siemens.com/bilddb/cax_de.aspx?mlfb=3SE52420HK621AJ0&lang=en)



last modified:

09.03.2015