

# MTP/MPO and LC Data Center Cable Solutions >

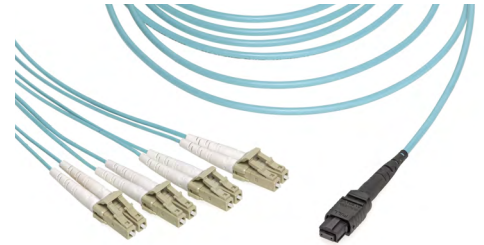
With high-density MTP/MPO and LC connectors, multiple cable configurations and integrated specialty components, Molex Data Center Cable Solutions support the integration of high-performance networks while reducing overall system cost and maintenance

## FEATURES AND ADVANTAGES

**Single-mode and multimode available**  
Support data rates across many applications



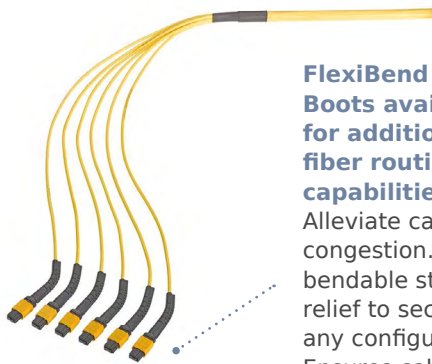
*QSFP Assembly with MPO/MTP Connectors*



*MPO-to-4-LC Breakout Assembly*

**Industry standard MPO interface**  
Simplifies implementation. Compatible with other pre-installed cables

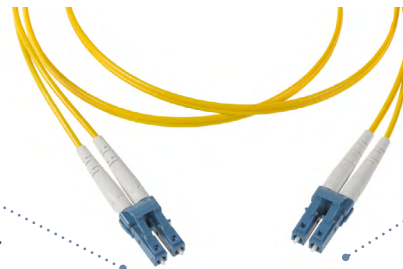
**Push-pull connector housing**  
Provides quick and reliable connections



*6 MPO/MTP Breakout*

**FlexiBend Boots available for additional fiber routing capabilities**  
Alleviate cable congestion. Offers bendable strain relief to secure any configuration. Ensures cable performance over multiple bends in various directions

**Industry-standard LC connector housing**  
Simplifies implementation. Compatible with other pre-installed cables

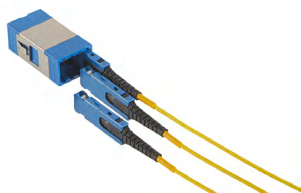


*LCD-to-LCD Cable Assembly*

**Common and proven technologies combined in the LC connector system**  
Uni-boot or duplex boots are available for LC duplex connectors

Low-loss options available	Meets insertion-loss budgets
Cable assemblies 100% insertion-loss tested prior to shipping	Ensures high performance. Reduces customer installation time

## ALSO AVAILABLE:



*SN Adapters and Cable Assemblies*



*CS Adapters and Cable Assemblies*



*Coming Soon: MDC Adapters and Cable Assemblies*

# MTP/MPO and LC Data Center Cable Solutions >

## MARKETS AND APPLICATIONS

### Telecommunications/Networking

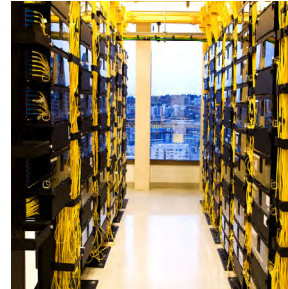
Optical transceivers  
Optical switches and routers  
Structural cabling

### Data Centers

Servers



Data Center Rack



Data Center Servers

## SPECIFICATIONS

### MTP/MPO Cable Assemblies

#### Reference Information

Packaging: Individually bagged  
Mates With: MPO Adapters/QSFP Transceivers  
Use With: MPO Adapters/QSFP Transceivers  
Designed In: Meters  
RoHS: Yes  
Halogen Free: TBD

#### Connector

Type:  
MPO female, aqua for multi-mode  
MPO female, yellow for single-mode low loss

#### Mechanical Properties

Fiber Count: 12 and 24 fiber options  
Operating Temperature: -5 to +70°C  
Durability (min.): 50 mating cycles

### LC Cable Assemblies

#### Reference Information

Packaging: Individually bagged  
Mates With: LC Adapters/SFP Transceivers  
Use With: LC Adapters/SFP Transceivers  
Designed In: Meters  
RoHS: Yes  
Halogen Free: Yes

#### Connector

Ferrule: Zirconia Ceramic  
Housing: Plastic

#### Mechanical Properties

Operating Temperature: -5 to +70°C  
Durability (min.): 250 mating cycles

### Applies to Both LC and MPO Assemblies

#### Fiber

Multimode:  
50/125 μm OM3 Bend-Insensitive  
50/125 μm OM4 Bend-Insensitive  
Single Mode:  
OS2 ITU-T G.657.A1 Bend-Insensitive

# MTP/MPO and LC Data Center Cable Solutions >

## ORDERING INFORMATION

Product Family	Molex Product Number	Description	Fiber Type	Length
LC Cable Assemblies	<a href="#"><u>88537-1501</u></a>	LCD/UPC JPR SM BIF 2.0mm ZPCD PLN	SM	1.0m
	<a href="#"><u>88537-1503</u></a>			3.0m
	<a href="#"><u>88537-1505</u></a>			5.0m
	<a href="#"><u>88537-1510</u></a>			10.0m
	<a href="#"><u>88537-1520</u></a>			20.0m
	<a href="#"><u>88537-3501</u></a>	LCD JPR MM OM3 2.00m ZPCD PLNM	OM3	1.0m
	<a href="#"><u>88537-3503</u></a>			3.0m
	<a href="#"><u>88537-3505</u></a>			5.0m
	<a href="#"><u>88537-3510</u></a>			10.0m
	<a href="#"><u>88537-3520</u></a>			20.0m
	<a href="#"><u>88537-4501</u></a>	LCD JPR MM OM4 2.0mm ZPCD PLNM	OM4	1.0m
	<a href="#"><u>88537-4503</u></a>			3.0m
	<a href="#"><u>88537-4505</u></a>			5.0m
	<a href="#"><u>88537-4510</u></a>			10.0m
	<a href="#"><u>88537-4520</u></a>			20.0m

Product Family	Molex Product Number	Description	Fiber Type	Length
MPO QSFP — Cable Assemblies	<a href="#"><u>88536-6203</u></a>	MTP QSFP JMTP Jumper	SM	3.0m
	<a href="#"><u>88536-6205</u></a>			5.0m
	<a href="#"><u>88536-6210</u></a>			10.0m
	<a href="#"><u>88536-6215</u></a>	MTP QSFP-to-4X LCD		15.0m
	<a href="#"><u>88536-6503</u></a>			3.0m
	<a href="#"><u>88536-6505</u></a>	MTP QSFP Jumper	OM3	5.0m
	<a href="#"><u>88536-6703</u></a>			3.0m
	<a href="#"><u>88536-6705</u></a>			5.0m
	<a href="#"><u>88536-6710</u></a>			10.0m
	<a href="#"><u>88536-6715</u></a>	MTP QSFP-to-4x LCD		15.0m
	<a href="#"><u>88536-6803</u></a>			3.0m
	<a href="#"><u>88536-6805</u></a>			5.0m

# MTP/MPO and LC Data Center Cable Solutions >

## ORDERING INFORMATION

Product Family	Molex Product Number	Description	Fiber Type	Length
MPO Data Center Trunk Cables	<a href="#"><u>106225-0120</u></a>	MPO (F)-to- MPO (F) Trunk Cable 12F	SM	1.0m
	<a href="#"><u>106225-0121</u></a>			3.0m
	<a href="#"><u>106225-0122</u></a>			5.0m
	<a href="#"><u>106225-0123</u></a>			10.0m
	<a href="#"><u>106225-0124</u></a>			15.0m
	<a href="#"><u>106225-0100</u></a>		OM3	1.0m
	<a href="#"><u>106225-0101</u></a>			3.0m
	<a href="#"><u>106225-0102</u></a>			5.0m
	<a href="#"><u>106225-0103</u></a>			10.0m
	<a href="#"><u>106225-0104</u></a>			15.0m

[www.molex.com/link/lc.html](http://www.molex.com/link/lc.html)

[www.molex.com/link/mpodatacentersolutions.html](http://www.molex.com/link/mpodatacentersolutions.html)