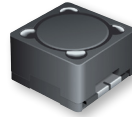




# PRODUCT CHANGE NOTIFICATION

## MAGNETICS



## Bourns® Model SRR1205, SRR1206, and SRR1208 Series Shielded High Power Inductors

### *Manufacturing Site Relocation and Process Changes*

Riverside, California – June 17, 2024 – To accommodate increasing production demands and in the spirit of continuous improvement, effective October 30, 2024, Bourns will relocate the manufacturing site for the Model [SRR1205](#), [SRR1206](#), and [SRR1208](#) Series Shielded High Power Inductors to a facility with higher production capacity. Bourns will also change its marking, testing, and taping processes into one integrated automated process. A list of affected part numbers is included below.

Affected Part Numbers					
SRR1205-2R5ML	SRR1205-121KL	SRR1206-180ML	SRR1206-561KL	SRR1208-330YL	SRR1208-681KL
SRR1205-3R3ML	SRR1205-151KL	SRR1206-220ML	SRR1206-681KL	SRR1208-390YL	SRR1208-821KL
SRR1205-5R0ML	SRR1205-181KL	SRR1206-270ML	SRR1206-821KL	SRR1208-470YL	SRR1208-102KL
SRR1205-7R5ML	SRR1205-221KL	SRR1206-330YL	SRR1206-102KL	SRR1208-560YL	SRR1208-122KL
SRR1205-100ML	SRR1205-271KL	SRR1206-390YL	SRR1206-122KL	SRR1208-680YL	SRR1208-152KL
SRR1205-120ML	SRR1205-331KL	SRR1206-470YL	SRR1206-152KL	SRR1208-820YL	SRR1208-182KL
SRR1205-150ML	SRR1205-391KL	SRR1206-560YL	SRR1208-2R5ML	SRR1208-101KL	SRR1208-222KL
SRR1205-180ML	SRR1205-471KL	SRR1206-680YL	SRR1208-4R5ML	SRR1208-101YL	SRR1208-272KL
SRR1205-220ML	SRR1205-561KL	SRR1206-820YL	SRR1208-6R5ML	SRR1208-121YL	SRR1208-332KL
SRR1205-250ML	SRR1205-681KL	SRR1206-101YL	SRR1208-100ML	SRR1208-151KL	SRR1208-392KL
SRR1205-270ML	SRR1205-821KL	SRR1206-121YL	SRR1208-100MCL	SRR1208-151YL	SRR1208-472KL
SRR1205-330ML	SRR1206-2R5ML	SRR1206-151KL	SRR1208-120ML	SRR1208-181YL	SRR1208-562KL
SRR1205-390ML	SRR1206-3R3ML	SRR1206-181KL	SRR1208-150ML	SRR1208-221KL	SRR1208-682KL
SRR1205-500YL	SRR1206-5R0ML	SRR1206-221KL	SRR1208-180ML	SRR1208-271KL	SRR1208-822KL
SRR1205-560YL	SRR1206-7R5ML	SRR1206-271KL	SRR1208-200ML	SRR1208-331KL	SRR1208-103KL
SRR1205-680YL	SRR1206-100ML	SRR1206-331KL	SRR1208-220ML	SRR1208-391KL	
SRR1205-750YL	SRR1206-120ML	SRR1206-391KL	SRR1208-220MCW	SRR1208-471KL	
SRR1205-101KL	SRR1206-150ML	SRR1206-471KL	SRR1208-270ML	SRR1208-561KL	

Users should verify that the described changes will not impact the performance of the product in their specific applications.

IC24097

The manufacturing site relocation will not result in any product design or material changes. The inductors manufactured at the relocated manufacturing site will meet the same data sheet specifications as those manufactured from the existing site.

The form, fit, function, and country of origin of the affected part numbers will remain the same. The quality and reliability of the affected part numbers should be improved as a result of process change. Traceability will be maintained through lot code and date code.

Samples are available upon request. Bourns recommends that customers test the affected part numbers in their specific applications for verification of satisfactory performance.

**Implementation dates are as follows:**

Date that deliveries of products manufactured at the old manufacturing location and current process will cease: **October 29, 2024**

Date that deliveries of products manufactured at the new manufacturing location and new automated processes will begin: **October 30, 2024**

First date code using the above changes: **2444**

*If you have any questions or need additional information, please feel free to [contact Customer Service/Inside Sales](#).*