



---

---

# SENSOR FEATHERWING

---

---

USER MANUAL

2501000201291

VERSION 1.2

FEBRUARY 15, 2022

\*\*\*\*\*

## **MUST READ**

### **Check for firmware updates**

Before using the product make sure you use the most recent firmware version, data sheet and user manual. This is especially important for Wireless Connectivity products that were not purchased directly from Würth Elektronik eiSos. A firmware update on these respective products may be required.

We strongly recommend to include in the customer system design, the possibility for a firmware update of the product.

## Revision history

Manual version	HW version	Notes	Date
1.0	2.0	Initial version	November 2020
1.1	2.2	Correction of typo in article number in schematic	February 2021
1.2	2.2	Updated github repository links	February 2022

## Abbreviations

Abbreviation	Name	Description
CISPR	Comité International Spécial des Perturbations Radioélectriques	International Special Committee on Radio Interference
EV	Evaluation	
ESD	Electro Static Discharge	
EMC	Electro Magnetic Compatibility	
GND	Ground	
HIGH	High signal level	
IDE	Integrated development environment	
IEC	International Electrotechnical Commission	
JST	Japan Solderless Terminal	
JTAG	Joint Test Action Group	
LED	Light Emitting Diode	
LGA	Land Grid Array	
Li-Po	Lithium-Polymer	
LOW	Low signal level	
MEMS	Micro-Electro Mechanical Systems	
PC	Personal Computer	
PCB	Printed Circuit Board	
SCL	Serial clock	
SDA	Serial data	
SDK	Software Development Kit	
SPI	Serial Peripheral Interface	
VCC		Supply voltage
VDD	Voltage Drain Drain	Supply voltage

# Contents

<b>1</b>	<b>General description</b>	<b>5</b>
1.1	Introduction . . . . .	5
1.2	Block diagram . . . . .	6
1.3	Contents . . . . .	6
<b>2</b>	<b>Functional description</b>	<b>7</b>
2.1	Adafruit Feather . . . . .	7
2.2	Sensor FeatherWing . . . . .	7
2.2.1	WSEN-PADS (2511020213301) . . . . .	7
2.2.2	WSEN-ITDS (2533020201601) . . . . .	8
2.2.3	WSEN-TIDS (2521020222501) . . . . .	8
2.2.4	WSEN-HIDS (2523020210001) . . . . .	8
<b>3</b>	<b>Hardware description</b>	<b>10</b>
3.1	Jumpers . . . . .	10
3.1.1	JP1 . . . . .	10
3.1.2	JP2 . . . . .	10
3.2	Connectors and pin headers . . . . .	11
3.2.1	CON1 . . . . .	12
3.2.2	CON2 and CON3 . . . . .	12
3.2.3	CON4 . . . . .	12
3.2.4	CON5 . . . . .	13
3.2.5	Feather connector . . . . .	13
3.3	Schematics . . . . .	15
3.4	Layout . . . . .	16
<b>4</b>	<b>Software description</b>	<b>18</b>
4.1	Software architecture . . . . .	18
4.2	Installing the tools . . . . .	19
4.2.1	IDE . . . . .	19
4.2.2	Installation steps . . . . .	19
4.3	Hardware Setup . . . . .	20
4.4	Running the quick start example . . . . .	20
<b>5</b>	<b>Regulatory compliance information</b>	<b>21</b>
5.1	Exemption clause . . . . .	21
<b>6</b>	<b>Important notes</b>	<b>22</b>
6.1	General customer responsibility . . . . .	22
6.2	Customer responsibility related to specific, in particular safety-relevant applications . . . . .	22
6.3	Best care and attention . . . . .	22
6.4	Customer support for product specifications . . . . .	22
6.5	Product improvements . . . . .	23
6.6	Product life cycle . . . . .	23
6.7	Property rights . . . . .	23
6.8	General terms and conditions . . . . .	23
<b>7</b>	<b>Legal notice</b>	<b>24</b>
7.1	Exclusion of liability . . . . .	24

7.2	Suitability in customer applications . . . . .	24
7.3	Trademarks . . . . .	24
7.4	Usage restriction . . . . .	24
<b>8</b>	<b>License terms</b>	<b>26</b>
8.1	Limited license . . . . .	26
8.2	Usage and obligations . . . . .	26
8.3	Ownership . . . . .	27
8.4	Firmware update(s) . . . . .	27
8.5	Disclaimer of warranty . . . . .	27
8.6	Limitation of liability . . . . .	27
8.7	Applicable law and jurisdiction . . . . .	28
8.8	Severability clause . . . . .	28
8.9	Miscellaneous . . . . .	28

# 1 General description

## 1.1 Introduction

The Würth Elektronik eiSos Sensor FeatherWing is a sensor development board fully compatible to the popular Adafruit Feather line of development boards. It consists of the following four sensors,

- WSEN-PADS - Absolute pressure sensor (2511020213301)
- WSEN-ITDS - 3-axis acceleration sensor (2533020201601)
- WSEN-TIDS - Temperature sensor (2521020222501)
- WSEN-HIDS - Humidity sensor (2523020210001)

All four sensors are connected over the shared I<sup>2</sup>C bus and hence can be connected to any of the Feather microcontroller boards. The Arduino (C/C++) drivers and examples (see chapter 4) made available makes it easy to build a prototype to kick-start the application development.

The Sensor FeatherWing also has the 4-pin JST QWIIC<sup>®</sup> connector on-board. This enables easy connection to the QWIIC<sup>®</sup> ecosystem of development boards. Additionally, a 6 pin connector enables extension of the FeatherWing with a host of evaluation boards from Würth Elektronik eiSos.

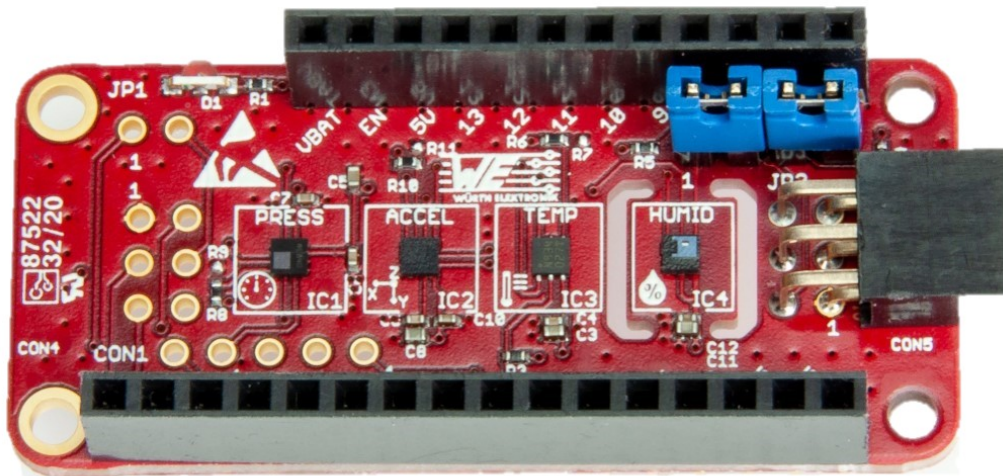


Figure 1: The WE Sensor FeatherWing (2501000201291)

## 1.2 Block diagram

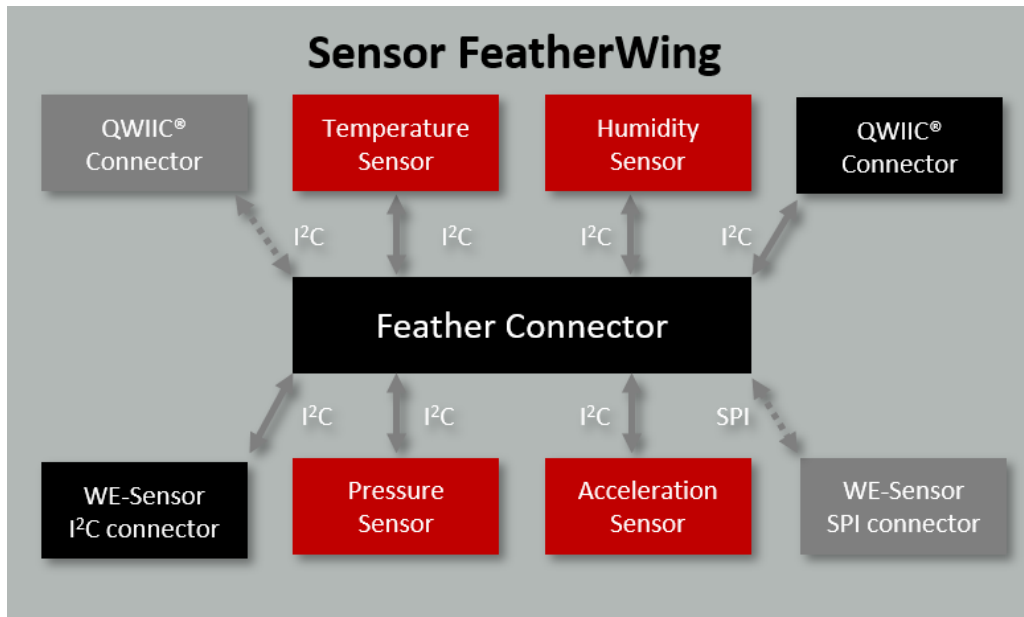


Figure 2: Block diagram - Sensor FeatherWing

## 1.3 Contents

Description	Quantity
WE Sensor FeatherWing	1
QWIIIC® connector	1
2×3 WE-sensor connector (right angled)	1
Packaging: ESD safe bag	2

Table 1: Contents 2501000201291



## 2 Functional description

The Sensor FeatherWing was designed with rapid prototyping in mind. Being fully compatible with the Adafruit ecosystem, this FeatherWing allows the user the flexibility to choose the preferred host microcontroller. The inherent modularity of the ecosystem allows the FeatherWing to be easily integrated into any project.

The next sections provide a brief introduction to Adafruit's Feather ecosystem and details on the sensors present on the FeatherWing.

Feel free to check our youtube channel:

[www.youtube.com/user/WuerthElektronik/videos](http://www.youtube.com/user/WuerthElektronik/videos) for video tutorials, hands-ons and webinars relating to our products.

### 2.1 Adafruit Feather

The Adafruit Feather ecosystem consists of two types of boards apart from a host of accessories:

- **Feather:** Adafruit Feathers are a complete line of development boards from Adafruit that are standalone and stackable. They can be powered either over the on-board micro-USB plugs or using a Li-Po battery. Feathers are portable, flexible and light as their namesake.
- **FeatherWings:** FeatherWings are stackable boards that when used along with a Feather add a certain functionality to the system.

The Feather system with more than 50+ Wings, several different types of accessories and arduino/circuit python based code support provides a perfect ecosystem for rapid prototyping. Please refer to [adafruit.com/feather](http://adafruit.com/feather) for more details on the Adafruit Feather ecosystem.

### 2.2 Sensor FeatherWing

The Sensor FeatherWing consists of four sensors. This section provides details regarding the key features of these sensors.

#### 2.2.1 WSEN-PADS (2511020213301)

The WSEN-PADS is a MEMS based piezo-resistive absolute pressure sensor with an integrated ASIC and an embedded temperature sensor. The fully molded holed LGA package and low current consumption makes this sensor suitable for a range of applications including weather stations, barometers, altimeters and indoor navigation.

#### Key features

- Absolute pressure range : 26 to 126 kPa
- Output data rate : 1 to 200 Hz
- Pressure data resolution : 24-bits
- Current consumption : 4  $\mu$ A
- Programmable pressure threshold and data-ready interrupt

Further details about this sensor can be found under [we-online.de/katalog/en/WSEN-PADS](http://we-online.de/katalog/en/WSEN-PADS)

### 2.2.2 WSEN-ITDS (2533020201601)

The WSEN-ITDS sensor is a 14-bit digital ultra-low-power and high-performance three-axis accelerometer with a digital output interface. Capability of detecting events like free fall, tap recognition, wake up, stationary/motion, activity/inactivity and 6D orientation make the sensor suitable for applications like vibration monitoring, tilt measurement, impact detection and many more.

#### Key features

- Selectable full scale :  $\pm 2g$ ,  $\pm 4g$ ,  $\pm 8g$ ,  $\pm 16g$ ,
- Bandwidth : 400 Hz
- Output data rate : Up to 1600 Hz
- Noise density :  $90 \mu g / \sqrt{Hz}$
- Operating modes : High-performance, Low-power, Normal
- Current consumption :  $16 \mu A$  (Low-power mode)

Further details about this sensor can be found under [we-online.de/katalog/en/WSEN-ITDS](http://we-online.de/katalog/en/WSEN-ITDS)

### 2.2.3 WSEN-TIDS (2521020222501)

The WSEN-TIDS is a high precision silicon-based digital temperature sensor IC with an integrated ASIC and a digital I<sup>2</sup>C interface. A compact UDFN package and fast thermal response make this sensor ideal for a range of applications like environmental monitoring, HVAC, PCB thermal monitoring, industrial control and many more.

#### Key features

- Temperature range :  $-40$  to  $125$  °C
- Output data rate : 25 to 200 Hz
- Temperature data resolution : 16-bits
- Current consumption :  $1.75 \mu A$
- Programmable temperature threshold interrupt

Further details about this sensor can be found under [we-online.de/katalog/en/WSEN-TIDS](http://we-online.de/katalog/en/WSEN-TIDS)

### 2.2.4 WSEN-HIDS (2523020210001)

The WSEN-HIDS is a 16-bit ultra-low power and high-performance humidity sensor with a digital interface. The pre-calibrated sensor in a compact LGA package is suitable for a variety of applications including HVAC systems, white goods, building automation and air conditioning.

## Key features

- Humidity range : 0 to 100 % rH
- Humidity noise : 0.35 % rH RMS
- Output data rate : 1 Hz, 7 Hz and 12.5 Hz
- Current consumption : 8.9  $\mu$ A
- Integrated temperature sensor

Further details about this sensor can be found under [we-online.de/katalog/en/WSEN-HIDS](http://we-online.de/katalog/en/WSEN-HIDS)

### 3 Hardware description

This sections contains a detailed description of the hardware features of the Sensor FeatherWing. The design files for this hardware can be downloaded from [github.com/WurthElektronik/FeatherWings](https://github.com/WurthElektronik/FeatherWings).

#### 3.1 Jumpers

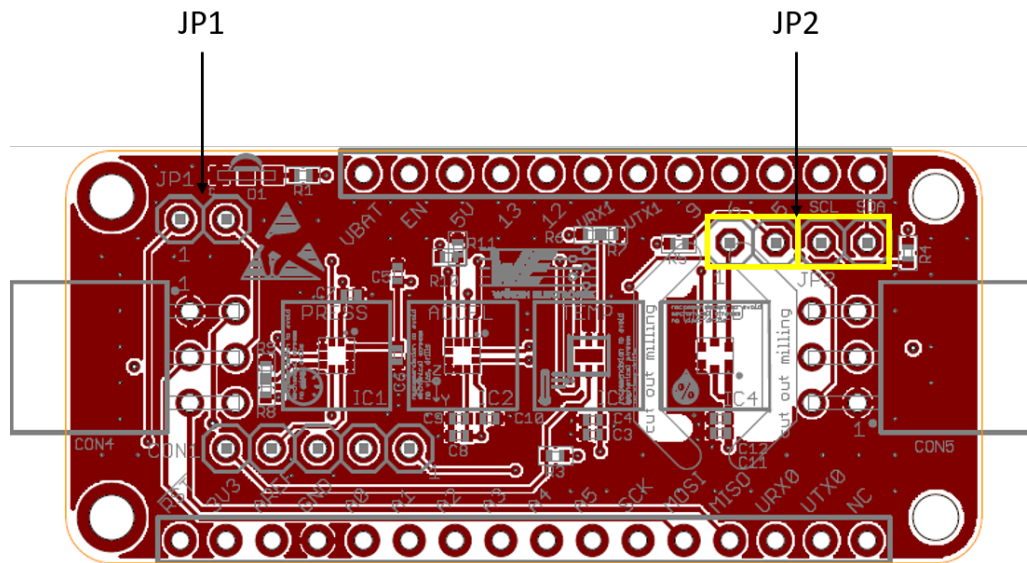


Figure 3: Jumpers and their default state

##### 3.1.1 JP1

This jumper has to be mounted and set when the CON4 is used to connect to a sensor using the SPI interface.

JP1	Function	Jumper set (default)
1,2	SPI_CE(CON4) to GPIOA5	No (Not mounted)

Table 2: Jumper JP1

##### 3.1.2 JP2

The standard I<sup>2</sup>C interface requires the SCL and SDA lines to be pulled up with resistors. These jumpers can be removed in cases where the pull-ups already exist on the I<sup>2</sup>C bus.

JP2	Function	Jumper set (default)
1,2	Connect I <sup>2</sup> C SCL line to a 4.7 k $\Omega$ Pull up resistor	Yes
3,4	Connect I <sup>2</sup> C SDA line to a 4.7 k $\Omega$ Pull up resistor	Yes

Table 3: Jumper JP2



Connector	Function
CON1	Pin header for interrupt lines of the sensors
CON2	QWIIC <sup>®</sup> connector
CON3	QWIIC <sup>®</sup> connector
CON4	2×3 connector for WE sensor EV-boards for SPI
CON5	2×3 connector for WE sensor EV-boards for I <sup>2</sup> C
Feather connector	Standard 16 and 12-pin headers for the Feather ecosystem

Table 4: Connector overview

### 3.2.1 CON1

Connector CON1 is a 1×5 2.54 mm pin header and provides all the interrupt lines that can be optionally connected to the host. This connector is not mounted.

Pin	Function
1	Interrupt of the WSEN-HIDS sensor
2	Interrupt 1 of the WSEN-ITDS sensor
3	Interrupt 0 of the WSEN-ITDS sensor
4	Interrupt of the WSEN-PADS sensor
5	Interrupt of the WSEN-TIDS sensor

### 3.2.2 CON2 and CON3

CON2 (mounted) and CON3 (not mounted) are 4-pin JST connectors that allow interfacing with SparkFun's QWIIC<sup>®</sup> development board ecosystem. CON3 is not mounted and needs to be soldered on in order to be daisy chain-able. The QWIIC<sup>®</sup> ecosystem offers a wide range of development boards and accessories for quick prototyping. Please check [sparkfun.com/qwiic](http://sparkfun.com/qwiic) for details on the QWIIC<sup>®</sup> ecosystem.

Pin	Function
1	I <sup>2</sup> C SCL
2	I <sup>2</sup> C SDA
3	VCC
4	GND

### 3.2.3 CON4

The connector 4 (not mounted) is a 2×2 2.54 mm pitch plug that is compatible with the EV-boards of sensors from Würth Elektronik eiSos using the SPI interface.

Pin	Function
1	GND
2	SPI_SCK (Clock)
3	SPI_MOSI (Master Out Slave In)
4	SPI_CE (Chip Enable)
5	SPI_MISO (Master In Slave Out)
6	VCC

### 3.2.4 CON5

The connector 5 is a 2×3 2.54 mm pitch plug that is compatible with the EV-boards of sensors from Würth Elektronik eiSos using the I<sup>2</sup>C interface.

Pin	Function
1	GND
2	I <sup>2</sup> C SCL
3	I <sup>2</sup> C SDA
4	Not connected
5	Not connected
6	VCC

### 3.2.5 Feather connector

This is the standard set of connectors that is used across the Feather ecosystem. The table below describes the functions of each of the 28 pins as applicable to this FeatherWing.

Pin Number	Pin name	Function
1	$\overline{RST}$	Not connected
2	3V3	3.3V power supply
3	AREF	Not connected
4	GND	Ground
5	A0	Not connected
6	A1	Not connected
7	A2	Not connected
8	A3	Not connected
9	A4	Not connected
10	A5	(Optional) SPI_CE via JP1
11	SCK	SPI clock
12	MOSI	SPI MOSI
13	MISO	SPI MISO
14	U0RX	Not connected
15	U0TX	Not connected
16	NC	Not connected

Pin Number	Pin name	Function
17	SDA	I <sup>2</sup> C SDA
18	SCL	I <sup>2</sup> C SCL
19	5	Not connected
20	6	Not connected
21	9	Not connected
22	U1TX	Not connected
23	U1RX	Not connected
24	12	Not connected
25	13	Not connected
26	5V	Not connected
27	EN	Not connected
28	VBAT	Not connected





### 3.4 Layout

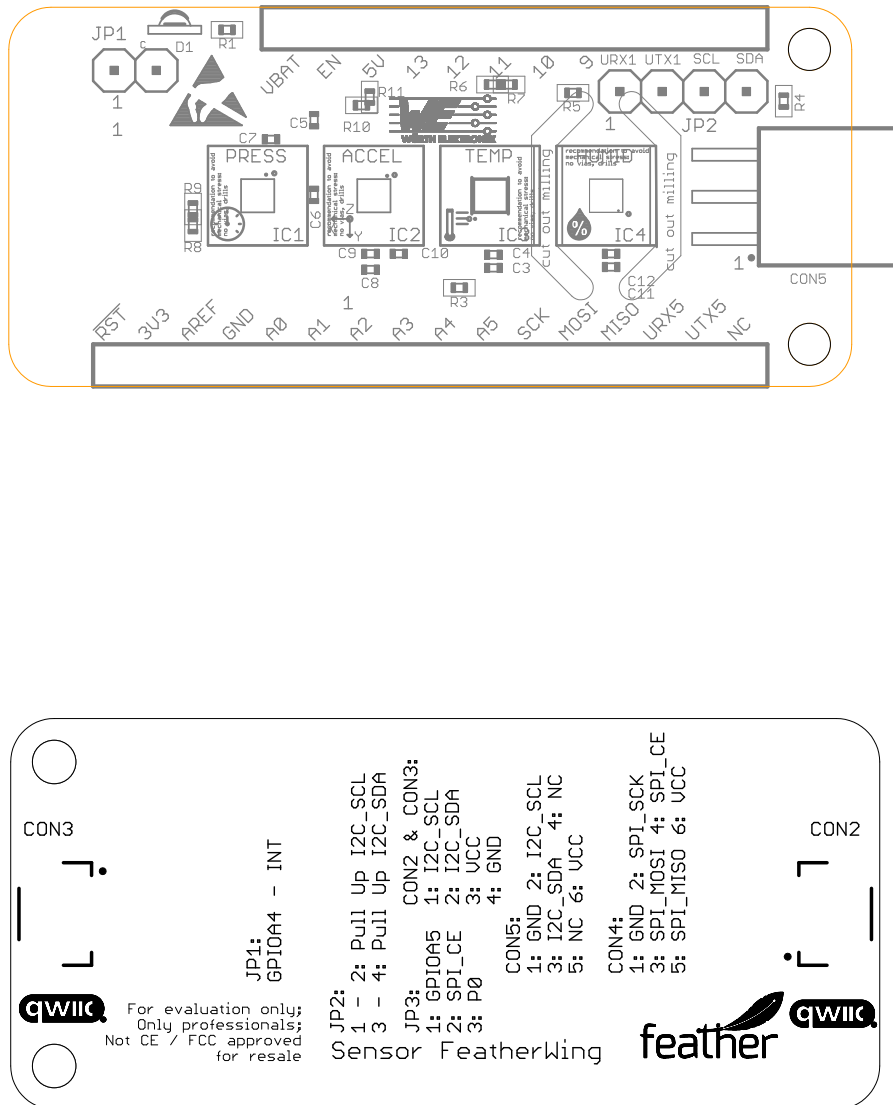


Figure 7: Assembly diagrams

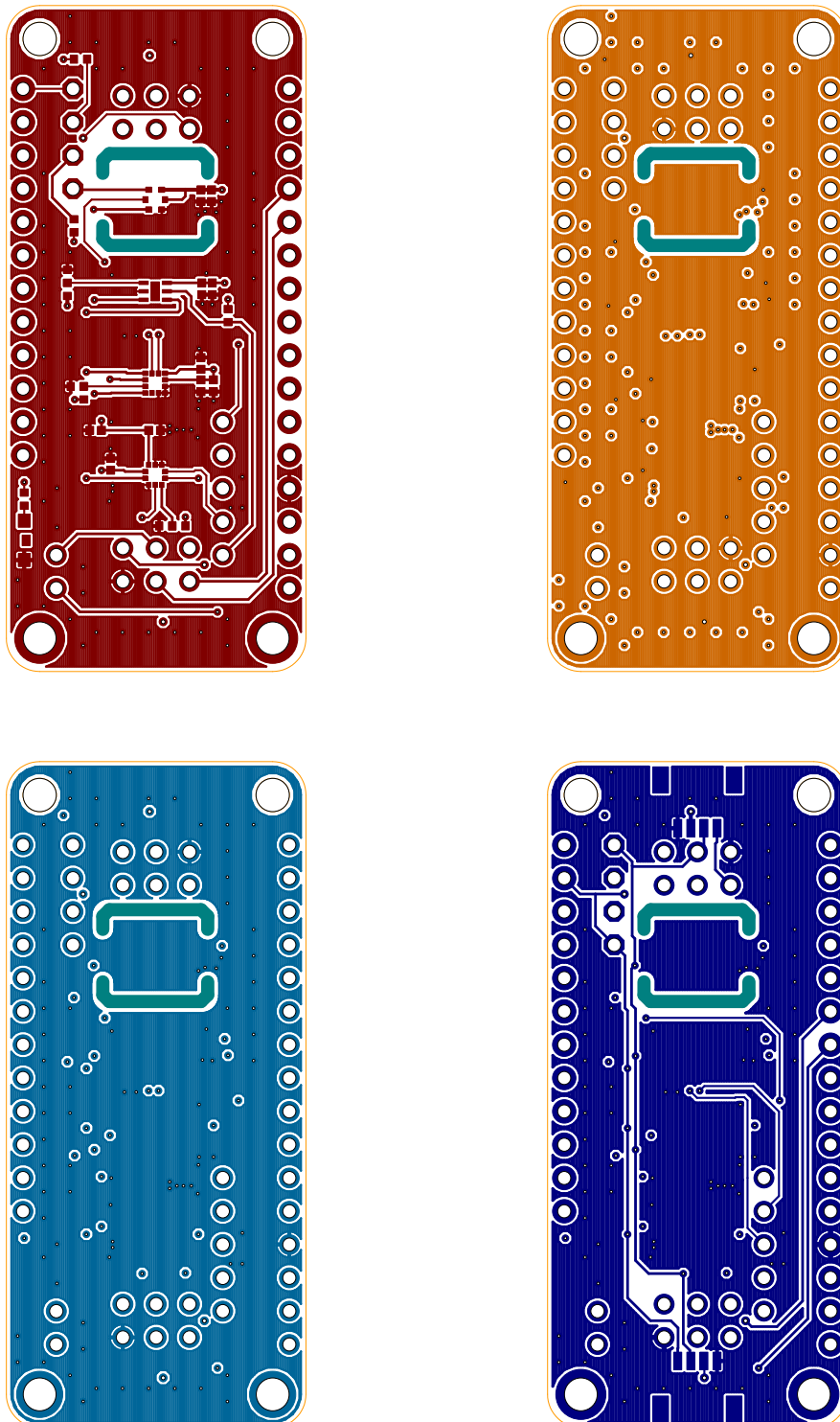


Figure 8: Top, bottom and internal layers

## 4 Software description

Würth Elektronik eiSos provides a software development kit (SDK) with examples to support all the WE FeatherWings. Here are the salient features of the WE FeatherWing SDK.

- The SDK is open-source and well documented.
- It uses popular open-source tool chain including an IDE.
- The examples are written in Arduino-styled C/C++ for quick prototyping.
- The core components of the SDK are written in pure C to enable easy porting to any microcontroller platform.
- Development platform independent (Windows, Linux or MAC).
- Modular structure of the software stack makes it easy to integrate into any project.

The SDK can be accessed on Github at [github.com/WurthElektronik/FeatherWings](https://github.com/WurthElektronik/FeatherWings).

### 4.1 Software architecture

The WE FeatherWing SDK is built up in a modular way using a set of open-source tools to enable complete flexibility for the user.

The figure 9 shows the architecture of the WE FeatherWing SDK.

- **PlatformIO:** is a cross-platform, cross-architecture, multiple framework professional tool for embedded software development. It provides the tool chain necessary for the software development including building, debugging, code-upload and many more. PlatformIO works well on all the modern operating systems and supports a host of development boards including the Feathers from Adafruit. Further details about PlatformIO can be found under [platformio.org](https://platformio.org)
- **Platform interface:** This layer provides abstraction to the peripheral drivers for the platform being used. Currently, this SDK implements an abstraction to the Arduino peripheral drivers for the Feather M0 express platform.
- **WE SDK:** This is a layer of platform-independent pure C drivers for sensors and wireless connectivity modules from Würth Elektronik eiSos. These drivers implement all the necessary functions to utilize full feature set of the sensors and wireless connectivity modules. More details on the SDK and downloads under, [we-online.com/wcs-software](https://we-online.com/wcs-software).
- **Board files:** This layer provides abstraction at a board level and provides functions to configure and control individual FeatherWings from WE.
- **User application:** The SDK currently implements a quick start example for each of the FeatherWings.

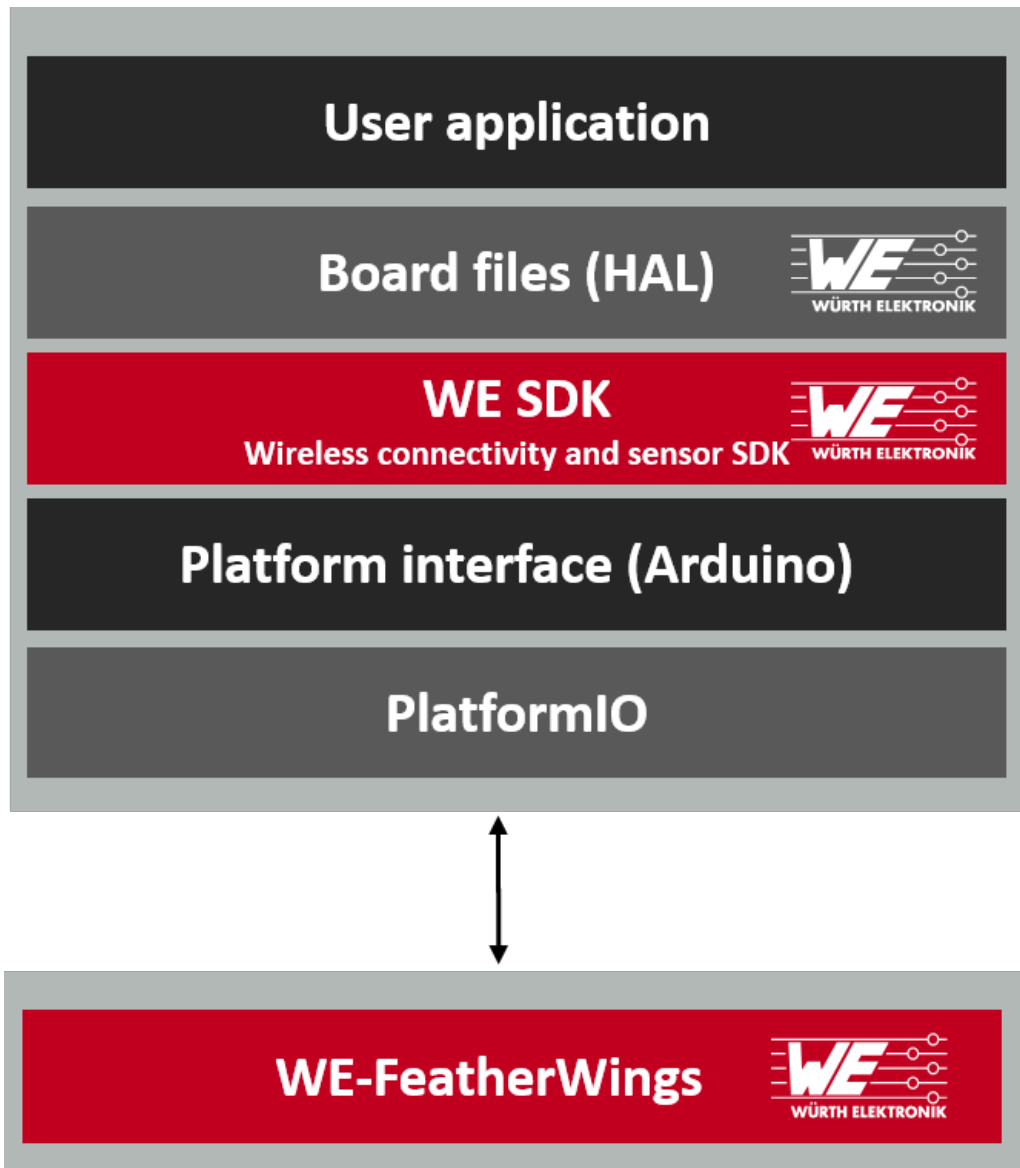


Figure 9: Software architecture

## 4.2 Installing the tools

### 4.2.1 IDE

Although, platformIO provides a versatile command line interface for development, the SDK provides quick start projects for the Visual Studio Code. This popular IDE makes for better code organization as well as code editing. Visual Studio Code is available on all modern operating systems. Support for extensions, built-in Git and a versatile code editor make it a well rounded tool for embedded software development. Please refer to [code.visualstudio.com](https://code.visualstudio.com) for more details on Visual Studio Code.

### 4.2.2 Installation steps

- Install Visual Studio Code on the platform of your choice following the instructions under [code.visualstudio.com/docs](https://code.visualstudio.com/docs)
- Follow the instructions under [platformio.org/install/ide?install=vscod](https://platformio.org/install/ide?install=vscod) to install PlatformIO IDE extension.

### 4.3 Hardware Setup

The quick start examples in the SDK are written to be run on *Adafruit's Feather M0 express*. The hardware setup is as simple as stacking up the FeatherWing on top of the M0 Feather and powering up the board.

### 4.4 Running the quick start example

- Clone or download the WE FeatherWing SDK from Github.  
[github.com/WurthElektronik/FeatherWings](https://github.com/WurthElektronik/FeatherWings)
- Open the workspace of interest with the filename <FeatherWing>.code-workspace in Visual Studio code.
- Build and upload the code from the PlatformIO tab as shown in the Figure 10
- After successful upload, click on Monitor to view the debug logs in the serial terminal (See Figure 10).

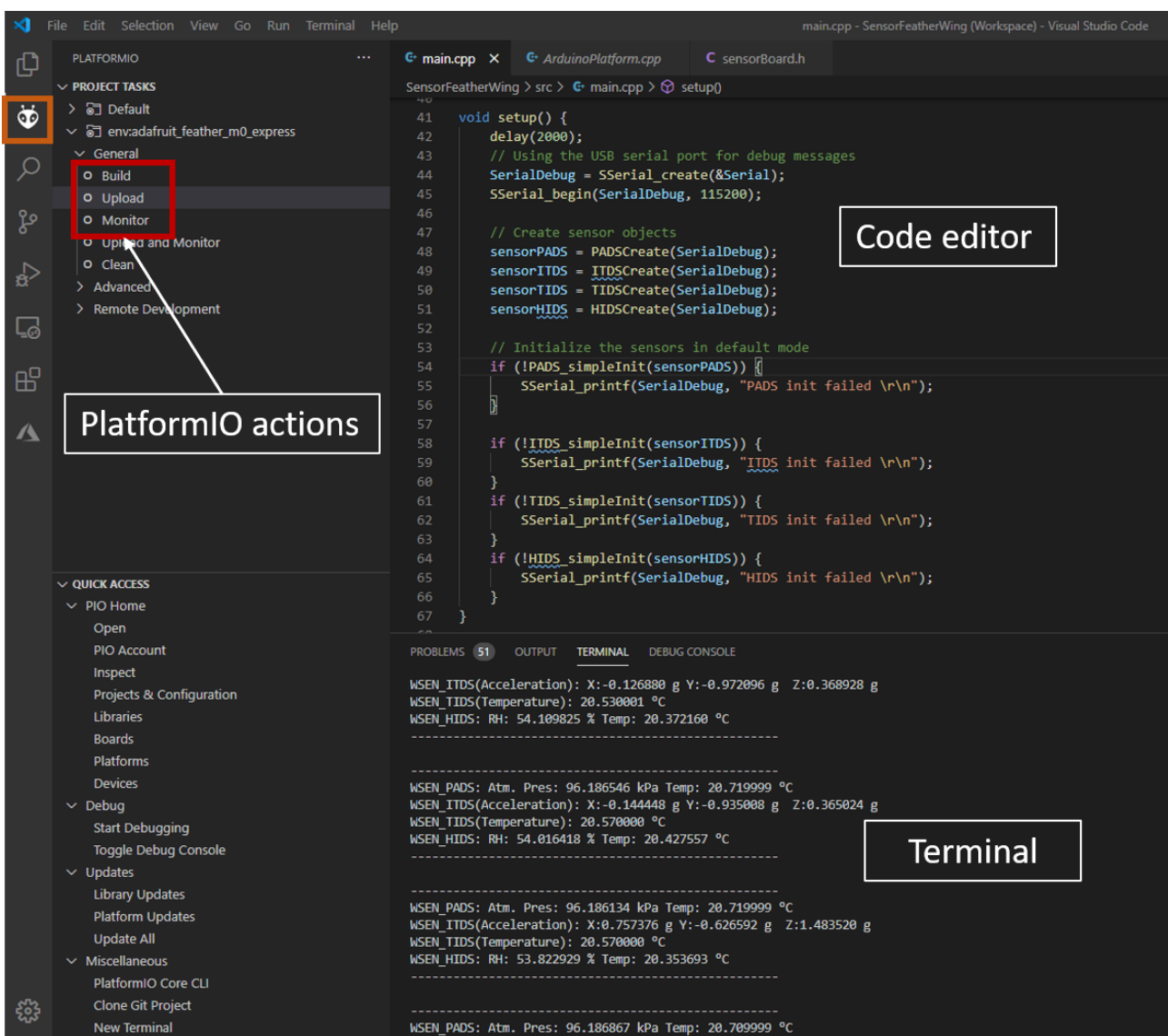


Figure 10: Running the quick start example

## 5 Regulatory compliance information

Pursuant to Article 1 (2.) of the EU directive 2014/53/EU, Article 1 (2.) the directive does not apply to equipment listed in Annex I (4.): custom-built evaluation kits destined for professionals to be used solely at research and development facilities for such purposes.

Nevertheless this evaluation board has been tested to satisfy general EMC requirements. Following standards have been applied:

- IEC 61000-4-3
- IEC 61000-4-4
- IEC 61000-4-6
- CISPR 16-2-1
- CISPR 16-2-3

### 5.1 Exemption clause

Relevant regulation requirements are subject to change. Würth Elektronik eiSos does not guarantee the accuracy of the before mentioned information. Directives, technical standards, procedural descriptions and the like may be interpreted differently by the national authorities. Equally, the national laws and restrictions may vary with the country. In case of doubt or uncertainty, we recommend that you consult with the authorities or official certification organizations of the relevant countries. Würth Elektronik eiSos is exempt from any responsibilities or liabilities related to regulatory compliance.

Notwithstanding the above, Würth Elektronik eiSos makes no representations and warranties of any kind related to their accuracy, correctness, completeness and/or usability for customer applications. No responsibility is assumed for inaccuracies or incompleteness.

## 6 Important notes

The following conditions apply to all goods within the wireless connectivity product range of Würth Elektronik eiSos GmbH & Co. KG:

### 6.1 General customer responsibility

Some goods within the product range of Würth Elektronik eiSos GmbH & Co. KG contain statements regarding general suitability for certain application areas. These statements about suitability are based on our knowledge and experience of typical requirements concerning the areas, serve as general guidance and cannot be estimated as binding statements about the suitability for a customer application. The responsibility for the applicability and use in a particular customer design is always solely within the authority of the customer. Due to this fact, it is up to the customer to evaluate, where appropriate to investigate and to decide whether the device with the specific product characteristics described in the product specification is valid and suitable for the respective customer application or not. Accordingly, the customer is cautioned to verify that the documentation is current before placing orders.

### 6.2 Customer responsibility related to specific, in particular safety-relevant applications

It has to be clearly pointed out that the possibility of a malfunction of electronic components or failure before the end of the usual lifetime cannot be completely eliminated in the current state of the art, even if the products are operated within the range of the specifications. The same statement is valid for all software sourcecode and firmware parts contained in or used with or for products in the wireless connectivity and sensor product range of Würth Elektronik eiSos GmbH & Co. KG. In certain customer applications requiring a high level of safety and especially in customer applications in which the malfunction or failure of an electronic component could endanger human life or health, it must be ensured by most advanced technological aid of suitable design of the customer application that no injury or damage is caused to third parties in the event of malfunction or failure of an electronic component.

### 6.3 Best care and attention

Any product-specific data sheets, manuals, application notes, PCN's, warnings and cautions must be strictly observed in the most recent versions and matching to the products firmware revisions. This documents can be downloaded from the product specific sections on the wireless connectivity homepage.

### 6.4 Customer support for product specifications

Some products within the product range may contain substances, which are subject to restrictions in certain jurisdictions in order to serve specific technical requirements. Necessary information is available on request. In this case, the field sales engineer or the internal sales person in charge should be contacted who will be happy to support in this matter.



## 6.5 Product improvements

Due to constant product improvement, product specifications may change from time to time. As a standard reporting procedure of the Product Change Notification (PCN) according to the JEDEC-Standard, we inform about major changes. In case of further queries regarding the PCN, the field sales engineer, the internal sales person or the technical support team in charge should be contacted. The basic responsibility of the customer as per section 6.1 and 6.2 remains unaffected. All wireless connectivity module driver software "wireless connectivity SDK" and its source codes as well as all PC software tools are not subject to the Product Change Notification information process.

## 6.6 Product life cycle

Due to technical progress and economical evaluation we also reserve the right to discontinue production and delivery of products. As a standard reporting procedure of the Product Termination Notification (PTN) according to the JEDEC-Standard we will inform at an early stage about inevitable product discontinuance. According to this, we cannot ensure that all products within our product range will always be available. Therefore, it needs to be verified with the field sales engineer or the internal sales person in charge about the current product availability expectancy before or when the product for application design-in disposal is considered. The approach named above does not apply in the case of individual agreements deviating from the foregoing for customer-specific products.

## 6.7 Property rights

All the rights for contractual products produced by Würth Elektronik eiSos GmbH & Co. KG on the basis of ideas, development contracts as well as models or templates that are subject to copyright, patent or commercial protection supplied to the customer will remain with Würth Elektronik eiSos GmbH & Co. KG. Würth Elektronik eiSos GmbH & Co. KG does not warrant or represent that any license, either expressed or implied, is granted under any patent right, copyright, mask work right, or other intellectual property right relating to any combination, application, or process in which Würth Elektronik eiSos GmbH & Co. KG components or services are used.

## 6.8 General terms and conditions

Unless otherwise agreed in individual contracts, all orders are subject to the current version of the "General Terms and Conditions of Würth Elektronik eiSos Group", last version available at [www.we-online.com](http://www.we-online.com).

## 7 Legal notice

### 7.1 Exclusion of liability

Würth Elektronik eiSos GmbH & Co. KG considers the information in this document to be correct at the time of publication. However, Würth Elektronik eiSos GmbH & Co. KG reserves the right to modify the information such as technical specifications or functions of its products or discontinue the production of these products or the support of one of these products without any written announcement or notification to customers. The customer must make sure that the information used corresponds to the latest published information. Würth Elektronik eiSos GmbH & Co. KG does not assume any liability for the use of its products. Würth Elektronik eiSos GmbH & Co. KG does not grant licenses for its patent rights or for any other of its intellectual property rights or third-party rights.

Notwithstanding anything above, Würth Elektronik eiSos GmbH & Co. KG makes no representations and/or warranties of any kind for the provided information related to their accuracy, correctness, completeness, usage of the products and/or usability for customer applications. Information published by Würth Elektronik eiSos GmbH & Co. KG regarding third-party products or services does not constitute a license to use such products or services or a warranty or endorsement thereof.

### 7.2 Suitability in customer applications

The customer bears the responsibility for compliance of systems or units, in which Würth Elektronik eiSos GmbH & Co. KG products are integrated, with applicable legal regulations. Customer acknowledges and agrees that it is solely responsible for compliance with all legal, regulatory and safety-related requirements concerning its products, and any use of Würth Elektronik eiSos GmbH & Co. KG components in its applications, notwithstanding any applications-related information or support that may be provided by Würth Elektronik eiSos GmbH & Co. KG. Customer represents and agrees that it has all the necessary expertise to create and implement safeguards which anticipate dangerous consequences of failures, monitor failures and their consequences lessen the likelihood of failures that might cause harm and take appropriate remedial actions. The customer will fully indemnify Würth Elektronik eiSos GmbH & Co. KG and its representatives against any damages arising out of the use of any Würth Elektronik eiSos GmbH & Co. KG components in safety-critical applications.

### 7.3 Trademarks

AMBER wireless is a registered trademark of Würth Elektronik eiSos GmbH & Co. KG. All other trademarks, registered trademarks, and product names are the exclusive property of the respective owners.

### 7.4 Usage restriction

Würth Elektronik eiSos GmbH & Co. KG products have been designed and developed for usage in general electronic equipment only. This product is not authorized for use in equipment where a higher safety standard and reliability standard is especially required or where a failure of the product is reasonably expected to cause severe personal injury or death,

unless the parties have executed an agreement specifically governing such use. Moreover, Würth Elektronik eiSos GmbH & Co. KG products are neither designed nor intended for use in areas such as military, aerospace, aviation, nuclear control, submarine, transportation (automotive control, train control, ship control), transportation signal, disaster prevention, medical, public information network etc. Würth Elektronik eiSos GmbH & Co. KG must be informed about the intent of such usage before the design-in stage. In addition, sufficient reliability evaluation checks for safety must be performed on every electronic component, which is used in electrical circuits that require high safety and reliability function or performance. By using Würth Elektronik eiSos GmbH & Co. KG products, the customer agrees to these terms and conditions.

## 8 License terms

This License Terms will take effect upon the purchase and usage of the Würth Elektronik eiSos GmbH & Co. KG wireless connectivity products. You hereby agree that this license terms is applicable to the product and the incorporated software, firmware and source codes (collectively, "Software") made available by Würth Elektronik eiSos in any form, including but not limited to binary, executable or source code form.

The software included in any Würth Elektronik eiSos wireless connectivity product is purchased to you on the condition that you accept the terms and conditions of this license terms. You agree to comply with all provisions under this license terms.

### 8.1 Limited license

Würth Elektronik eiSos hereby grants you a limited, non-exclusive, non-transferable and royalty-free license to use the software and under the conditions that will be set forth in this license terms. You are free to use the provided Software only in connection with one of the products from Würth Elektronik eiSos to the extent described in this license terms. You are entitled to change or alter the source code for the sole purpose of creating an application embedding the Würth Elektronik eiSos wireless connectivity product. The transfer of the source code to third parties is allowed to the sole extent that the source code is used by such third parties in connection with our product or another hardware provided by Würth Elektronik eiSos under strict adherence of this license terms. Würth Elektronik eiSos will not assume any liability for the usage of the incorporated software and the source code. You are not entitled to transfer the source code in any form to third parties without prior written consent of Würth Elektronik eiSos.

You are not allowed to reproduce, translate, reverse engineer, decompile, disassemble or create derivative works of the incorporated Software and the source code in whole or in part. No more extensive rights to use and exploit the products are granted to you.

### 8.2 Usage and obligations

The responsibility for the applicability and use of the Würth Elektronik eiSos wireless connectivity product with the incorporated Firmware in a particular customer design is always solely within the authority of the customer. Due to this fact, it is up to you to evaluate and investigate, where appropriate, and to decide whether the device with the specific product characteristics described in the product specification is valid and suitable for your respective application or not.

You are responsible for using the Würth Elektronik eiSos wireless connectivity product with the incorporated Firmware in compliance with all applicable product liability and product safety laws. You acknowledge to minimize the risk of loss and harm to individuals and bear the risk for failure leading to personal injury or death due to your usage of the product.

Würth Elektronik eiSos' products with the incorporated Firmware are not authorized for use in safety-critical applications, or where a failure of the product is reasonably expected to cause severe personal injury or death. Moreover, Würth Elektronik eiSos' products with the incorporated Firmware are neither designed nor intended for use in areas such as military, aerospace, aviation, nuclear control, submarine, transportation (automotive control, train control, ship control), transportation signal, disaster prevention, medical, public information network etc. You shall inform Würth Elektronik eiSos about the intent of such usage before design-in stage. In certain customer applications requiring a very high level of safety and in which the malfunction or failure of an electronic component could endanger human life or

health, you must ensure to have all necessary expertise in the safety and regulatory ramifications of your applications. You acknowledge and agree that you are solely responsible for all legal, regulatory and safety-related requirements concerning your products and any use of Würth Elektronik eiSos' products with the incorporated Firmware in such safety-critical applications, notwithstanding any applications-related information or support that may be provided by Würth Elektronik eiSos. YOU SHALL INDEMNIFY WÜRTH ELEKTRONIK EISOS AGAINST ANY DAMAGES ARISING OUT OF THE USE OF WÜRTH ELEKTRONIK EISOS' PRODUCTS WITH THE INCORPORATED FIRMWARE IN SUCH SAFETY-CRITICAL APPLICATIONS.

### 8.3 Ownership

The incorporated Firmware created by Würth Elektronik eiSos is and will remain the exclusive property of Würth Elektronik eiSos.

### 8.4 Firmware update(s)

You have the opportunity to request the current and actual Firmware for a bought wireless connectivity Product within the time of warranty. However, Würth Elektronik eiSos has no obligation to update a modules firmware in their production facilities, but can offer this as a service on request. The upload of firmware updates falls within your responsibility, e.g. via ACC or another software for firmware updates. Firmware updates will not be communicated automatically. It is within your responsibility to check the current version of a firmware in the latest version of the product manual on our website. The revision table in the product manual provides all necessary information about firmware updates. There is no right to be provided with binary files, so called "Firmware images", those could be flashed through JTAG, SWD, Spi-Bi-Wire, SPI or similar interfaces.

### 8.5 Disclaimer of warranty

THE FIRMWARE IS PROVIDED "AS IS". YOU ACKNOWLEDGE THAT WÜRTH ELEKTRONIK EISOS MAKES NO REPRESENTATIONS AND WARRANTIES OF ANY KIND RELATED TO, BUT NOT LIMITED TO THE NON-INFRINGEMENT OF THIRD PARTIES' INTELLECTUAL PROPERTY RIGHTS OR THE MERCHANTABILITY OR FITNESS FOR YOUR INTENDED PURPOSE OR USAGE. WÜRTH ELEKTRONIK EISOS DOES NOT WARRANT OR REPRESENT THAT ANY LICENSE, EITHER EXPRESS OR IMPLIED, IS GRANTED UNDER ANY PATENT RIGHT, COPYRIGHT, MASK WORK RIGHT, OR OTHER INTELLECTUAL PROPERTY RIGHT RELATING TO ANY COMBINATION, MACHINE, OR PROCESS IN WHICH THE WÜRTH ELEKTRONIK EISOS' PRODUCT WITH THE INCORPORATED FIRMWARE IS USED. INFORMATION PUBLISHED BY WÜRTH ELEKTRONIK EISOS REGARDING THIRD-PARTY PRODUCTS OR SERVICES DOES NOT CONSTITUTE A LICENSE FROM WÜRTH ELEKTRONIK EISOS TO USE SUCH PRODUCTS OR SERVICES OR A WARRANTY OR ENDORSEMENT THEREOF.

### 8.6 Limitation of liability

Any liability not expressly provided by Würth Elektronik eiSos shall be disclaimed. You agree to hold us harmless from any third-party claims related to your usage of the Würth Elektronik eiSos' products with the incorporated Firmware, software and source code. Würth

Elektronik eiSos disclaims any liability for any alteration, development created by you or your customers as well as for any combination with other products.

## 8.7 Applicable law and jurisdiction

Applicable law to this license terms shall be the laws of the Federal Republic of Germany. Any dispute, claim or controversy arising out of or relating to this license terms shall be resolved and finally settled by the court competent for the location of Würth Elektronik eiSos' registered office.

## 8.8 Severability clause

If a provision of this license terms is or becomes invalid, unenforceable or null and void, this shall not affect the remaining provisions of the terms. The parties shall replace any such provisions with new valid provisions that most closely approximate the purpose of the terms.

## 8.9 Miscellaneous

Würth Elektronik eiSos reserves the right at any time to change this terms at its own discretion. It is your responsibility to check at Würth Elektronik eiSos homepage for any updates. Your continued usage of the products will be deemed as the acceptance of the change.

We recommend you to be updated about the status of new firmware and software, which is available on our website or in our data sheet and manual, and to implement new software in your device where appropriate.

By ordering a wireless connectivity product, you accept this license terms in all terms.

## List of Figures

1	The WE Sensor FeatherWing (2501000201291) . . . . .	5
2	Block diagram - Sensor FeatherWing . . . . .	6
3	Jumpers and their default state . . . . .	10
4	Connectors on the top . . . . .	11
5	Connectors at the bottom . . . . .	11
6	Schematics . . . . .	15
7	Assembly diagrams . . . . .	16
8	Top, bottom and internal layers . . . . .	17
9	Software architecture . . . . .	19
10	Running the quick start example . . . . .	20

## List of Tables

1	Contents 2501000201291 . . . . .	6
2	Jumper JP1 . . . . .	10
3	Jumper JP2 . . . . .	10
4	Connector overview . . . . .	12





# more than you expect



**Internet  
of Things**



**Monitoring  
& Control**



**Automated Meter  
Reading**

**Contact:**

Würth Elektronik eiSos GmbH & Co. KG  
Division Wireless Connectivity & Sensors

Max-Eyth-Straße 1  
74638 Waldenburg  
Germany

Tel.: +49 651 99355-0  
Fax.: +49 651 99355-69  
[www.we-online.com/wireless-connectivity](http://www.we-online.com/wireless-connectivity)

