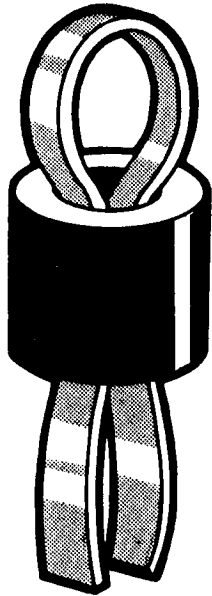


PCB Connectors

Order code	Manufacturer code	Description
17-1810	203	1.5MM BLACK TEST TERMINAL(100)
17-1815	207	1.5MM RED TEST TERMINAL (100)
17-1820	208	1.5MM GREEN TEST TERMINAL(100)
17-1825	103	2.15MM BLACK TEST TERMINAL (100)
17-1830	107	2.15MM RED TEST TERMINAL (100)
17-1835	108	2.15MM GREEN TEST TERMINAL (100)
17-1840	303	2.4MM BLK.TEST TERMINAL (100)

PCB Connectors	Page 1 of 2
The enclosed information is believed to be correct, Information may change 'without notice' due to product improvement. Users should ensure that the product is suitable for their use. E. & O. E.	Revision A 04/07/2003



TECHNICAL SPECIFICATIONS

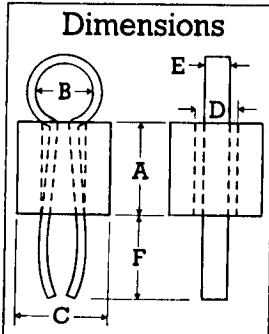
Material

Bead: Boro Silicate Sintered Glass
 Tag: Phosphor Bronze BS 2873 Solder Tinned

GLASS BEAD

COEFF	DENSITY	VISCOSITY			LOG (OHM.CM)			DIELECTRIC	
		POISE °C			DC. RESISTIVITY			PROPERTIES	
TERM. EXPN × 10 ⁻⁶ /°C	g/cc	14.6	13	7.6	TR	250°C 350°C		AT 1 MHZ AT 20°C	
4.94	2.27	10	10	10	100	10.1	8.2	CONST	LOSS ANGLE
		475	515	719	365			5.7	0.003

NOTE: COEFFICIENT OF EXPANSION IS QUOTED FOR THE RANGE 50°-300°C



DIMENSIONS	(Large)		(Small)		(Long Legged)	
	MM	INCHES	MM	INCHES	MM	INCHES
A	2.84-3.10 / 0.112-0.122		3.05-3.30 / 0.120-0.130		2.84-3.10 / 0.112-0.122	
B	2.03-2.16 / 0.080-0.085		1.30-1.50 / 0.051-0.059		2.03-2.16 / 0.080-0.085	
C	2.87-3.12 / 0.113-0.123		2.21-2.47 / 0.087-0.097		2.87-3.12 / 0.113-0.123	
D	1.50-1.75 / 0.059-0.069		1.07-1.32 / 0.042-0.052		1.50-1.75 / 0.059-0.069	
E	0.8	0.032	0.5	0.020	0.8	0.032
F	2.78	7/64	2.78	7/64	3.57	9/64
Board Size	1.59	1/16	1.59	1/16	2.38	3/32
Hole Size	1.32	0.052	1.0	1/16	1.32	0.052
Hole Centre	3.20	0.125	2.5	0.100	3.20	0.125