



**Model Number**

**BT43-RG-01**

Activator for F25 series including protective housing and mounting plate

**Features**

- **High-visibility valve position display**
- **Suitable for right and left rotating drives**
- **Protection against contamination and damage**
- **Actuator to mount without tool**

**Technical data**

**General specifications**

Ring diameter ≤ 32 mm

**Nominal ratings**

Valve status indicator  
red = CLOSED  
green = OPEN

**Ambient conditions**

Ambient temperature -25 ... 70 °C (-13 ... 158 °F)

**Mechanical specifications**

Shaft diameter ≤ 31 mm  
Shaft height 20 mm and 30 mm  
Mounting hole pattern 30 x 80 mm

**Material**

Housing PC  
Actuator PBT  
Spacer element PP  
Mounting screw Stainless steel 1.4305 / AISI 303 , 2 cylinder head screws ( Mounting plate )

Activation target Stainless steel 1.4305 / AISI 303 (integrated)

Mass 107 g

**General information**

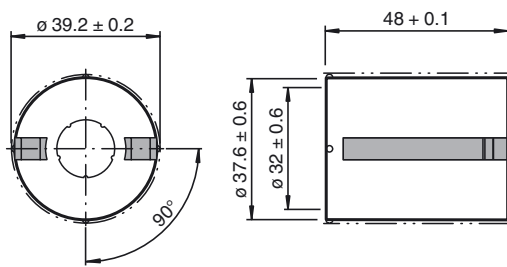
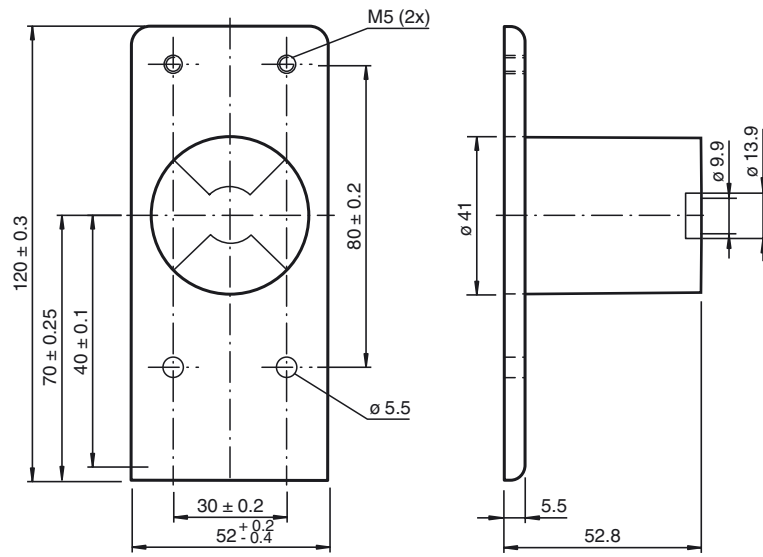
Scope of delivery  
1 Activator for F25 series  
1 Spacer element for 20 mm shaft height  
1 Spacer element for 30 mm shaft height  
1 Protective cover  
1 Mounting plate with 2 cylinder head screws M5 X 13  
2 cylinder head screws M5x30 for F25 mounting  
2 cylinder head screws M5x45 for F25K mounting

**Compliance with standards and directives**

Standard conformity  
Standards VDI / VDE 3845

Release date: 2016-07-18 15:22 Date of issue: 2016-07-18 264864\_eng.xml

Dimensions



with Spacer element for 20 mm shaft height

with Spacer element for 30 mm shaft height

