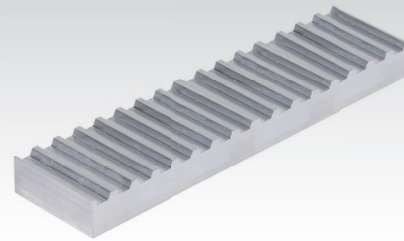
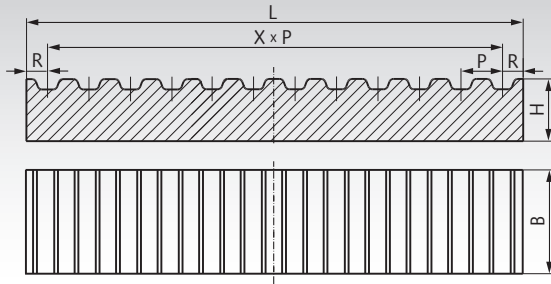


## Clamping Plate Work Pieces for Timing Belts



**Material:** Aluminium similar to EN AW2017A.

Clamping plates are used to fix belt ends.

**Ordering Details:** e.g.: Product No. 160 799 00L, Clamping Plate Work Piece T2,5, Length 178mm, Width 25mm

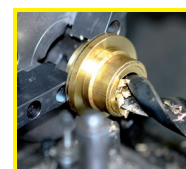
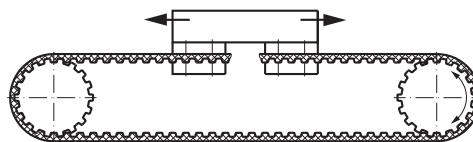
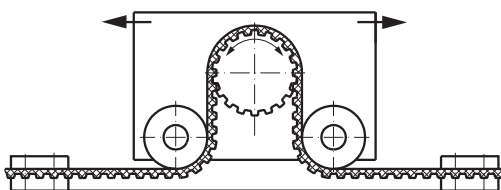
Product No.	Profile mm	P mm	L mm	B mm	H mm	R mm	X x P mm	X* mm	Weight g
160 799 00L	T2,5	2,5	178	25	5	1,5	175	70	60
162 899 00L	T5	5	176,8	45	8	3,4	170	34	165
162 899 01L	T5	5	176,8	70	8	3,4	170	34	255
164 899 00L	T10	10	230	60	15	5	220	22	540
164 999 01L	T10	10	230	125	15	5	220	22	1125
166 899 00L	AT5	5	176,8	45	8	3,4	170	34	160
166 899 01L	AT5	5	176,8	70	8	3,4	170	34	250
168 899 00L	AT10	10	230	60	15	5	220	22	520
168 899 01L	AT10	10	230	125	15	5	220	22	1090
171 399 00L	3M	3	178	30	6	2	174	58	85
173 599 00L	5M	5	176,8	45	8	3,4	170	34	150
175 399 00L	8M	8	226	55	15	5	216	27	455
175 799 00L	8M	8	226	110	15	5	216	27	915
177 663 99L	14M	14	228	90	22	9	210	15	1180
177 667 99L	14M	14	228	150	22	9	210	15	1960

\* Number of complete teeth in the range X x P.

**Usage:** These clamping plate work pieces are used if the standard clamping plates according catalogue page 200 cannot be used for dimensional reason. The clamping plate work pieces have max. production length and optimized width to be most flexible for customer rework. We would appreciate to quote such rework on request with shortest delivery time.

**Reworking:** The belt should be engaged with minimum 6 teeth. Maintain the dimension R. The mounting holes must be placed beside the belt, the belt must not be bored.

## Mounting Examples



**Reworking within  
24h-service possible.  
Custom made parts  
on request.**