

MASI68 DI4/0,2A AB 4XM8

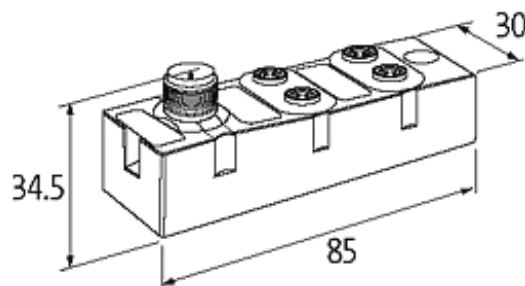
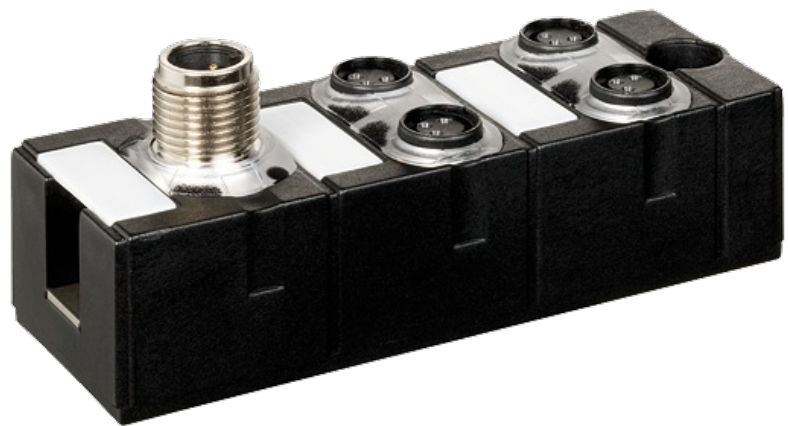
Compact module

DI4 - 0.2 A (C) 4×M8 (AB)

For connection cables please see chapter "Connection Technology" All housings are fully potted

[Link to Product](#)

Illustration



Product may differ from Image

Approvals



Input

Type	for 3-wire sensors or mechanical switches, PNP, (EN 61131-2)
Sensor supply US	max. 200 mA from AS-Interface (short-circuit and overload protected)

Connections

Fieldbus	M12, A-coded
I/O ports	M8 (3-pole)

Technical Data

Bus voltage (AS-Interface)	26.5...31.6 V DC
Addressing	via master or M12 connection and programming device
Address range	1...62 (1...31 A or B)
Profile (IO/ID/ID2 code)	S-0.A.0
Total current	max. 250 mA

General data

Protection	IP68
Mounting method	screw fixing
Temperature range	-20...+60 °C (storage temperature -20...+70 °C)
Dimensions H × W × D	85×30×34.5 mm

Diagnostic

Communication status	via LED
Diagnostic via LED	per module
Monitoring - no voltage	yes

Commercial data

country of origin	DE
customs tariff number	85176200
minimum order quantity	1