

Seating Pins • partially DIN 6321 (old norm)

22630.0120



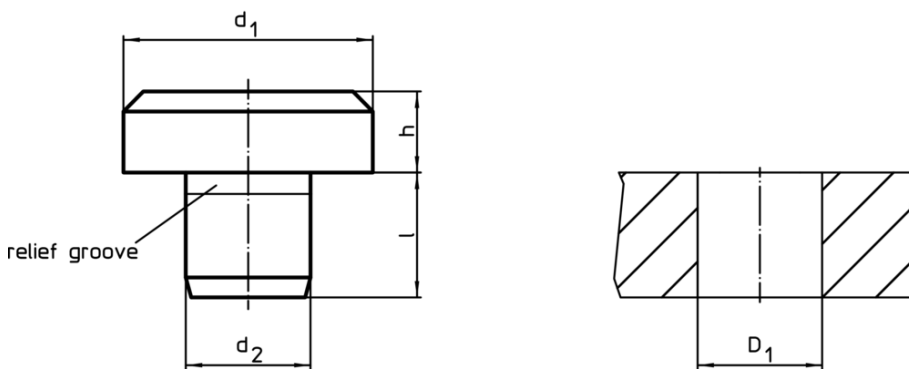
Product Description

To be used as feet and bearings.
Bearing surface without distortion.

Material

- Tool steel, hardened, ground

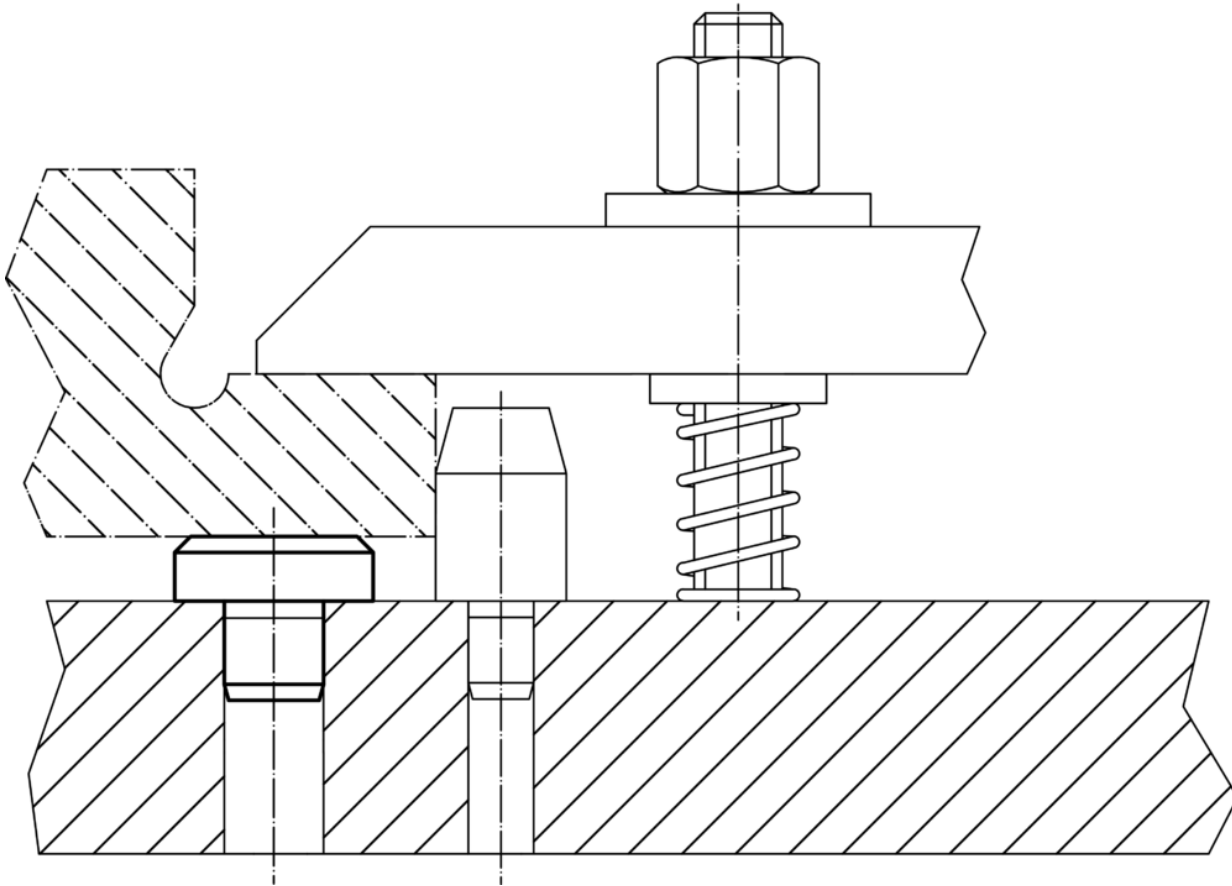
Drawing



Order information

d ₁	Dimensions			l	Location hole D ₁ H7 [mm]	[g]	Art. No.
	h h9 [mm]	d ₂ n6					
intermediate sizes							
10	4.5	6		8.5	6	4.4	22630.0120

Application example



Compliance

RoHS compliant

Compliant according to Directive 2011/65/EU and Directive 2015/863

Does not contain SVHC substances

No SVHC substances with more than 0.1% w/w contained - SVHC list [REACH] as of 10.06.2022

Does not contain Proposition 65 substances

No Proposition 65 substances included

<https://www.P65Warnings.ca.gov/>

Free from Conflict Minerals

This product does not contain any substances designated as "conflict minerals" such as tantalum, tin, gold or tungsten from the Democratic Republic of Congo or adjacent countries.