



## Connection 4p horizontal/vertical, 3200A



Powering Business Worldwide™

**Part no.** IZMX-THV404-1  
**Article no.** 183975  
**Catalog No.** 65A3137G18

### Delivery programme

Product range			Accessories
Accessories			Main terminal kits
Accessories			Horizontal and vertical connections
			Cu bars can be connected directly to the circuit-breaker's flanged connections. This connector kit includes T-shaped adapters for all main terminals. These adapters can be mounted horizontally or vertically on circuit-breakers with ratings of up to 3,200 A.
Rated current	$I_n$	A	800 - 3200
Pole			4
For use with			IZMX40...4...08... IZMX40...4...10... IZMX40...4...12... IZMX40...4...16... IZMX40...4...20... IZMX40...4...25... IZMX40...4...32... INX40...4...08... INX40...4...10... INX40...4...12... INX40...4...16... INX40...4...20... INX40...4...25... INX40...4...32...
Information about equipment supplied			Main terminals are not supplied as standard with the basic devices and cassettes. Each set includes the connections for top and bottom. 3-pole= 6 connections; 4-pole= 8 connections, including accessories for mounting on the flanged circuit-breaker connection.

### Design verification as per IEC/EN 61439

Technical data for design verification			
Operating ambient temperature min.		°C	-25
Operating ambient temperature max.		°C	70

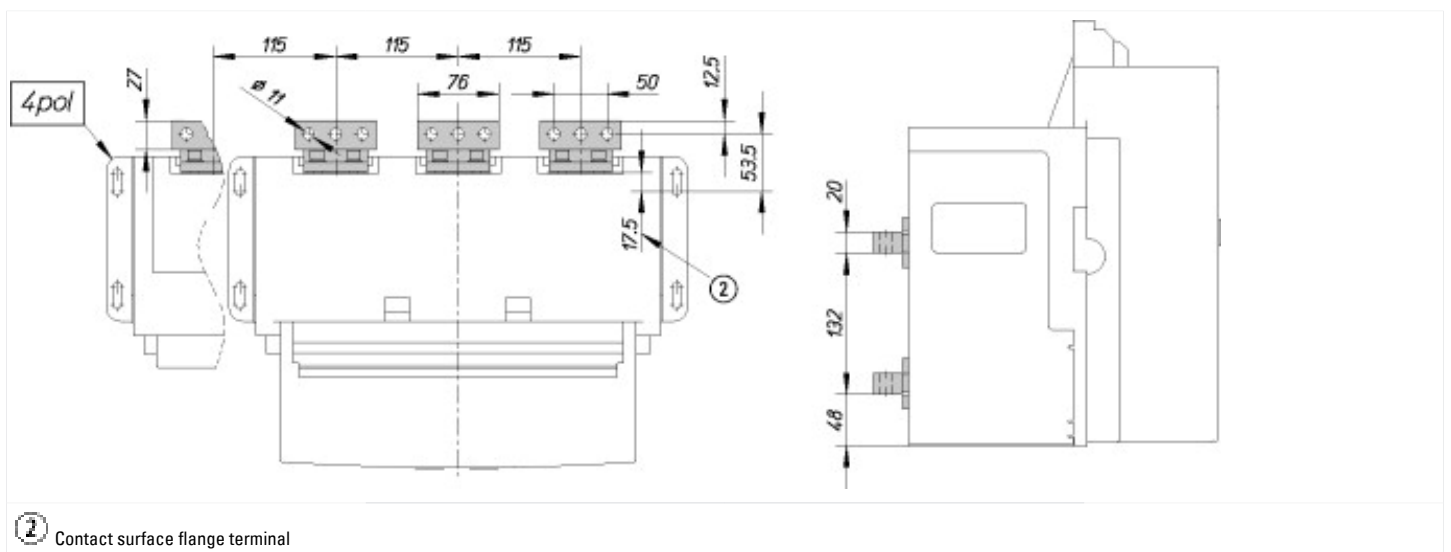
### Technical data ETIM 6.0

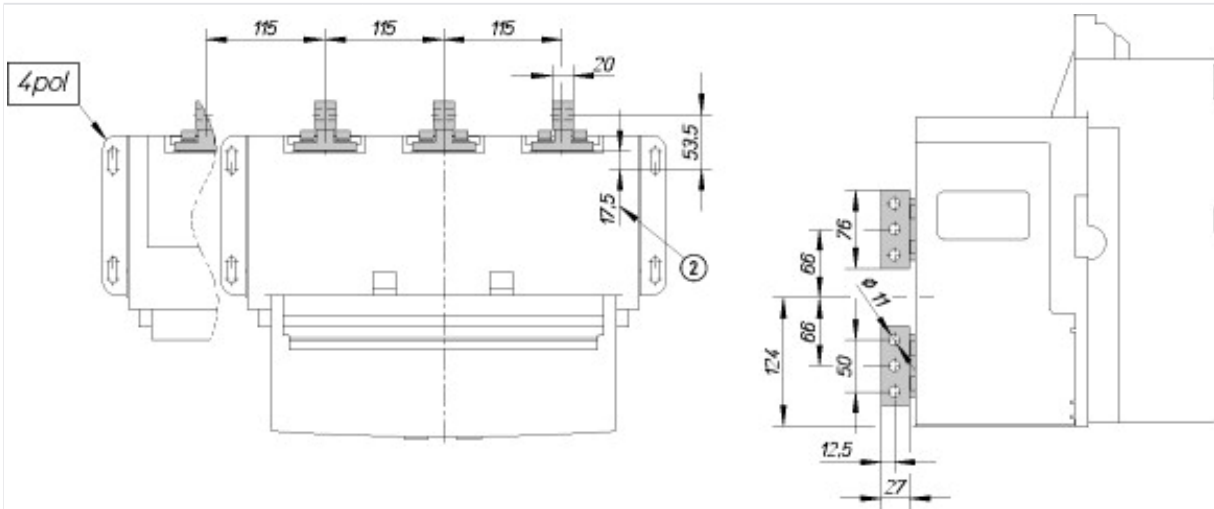
Low-voltage industrial components (EG000017) / Connection vane/phase spreader (EC002019)

Electric engineering, automation, process control engineering / Low-voltage switch technology / Component for low-voltage switching technology / Connection vane/phase spreader (ec1@ss8.1-27-37-13-05 [ACN990009])

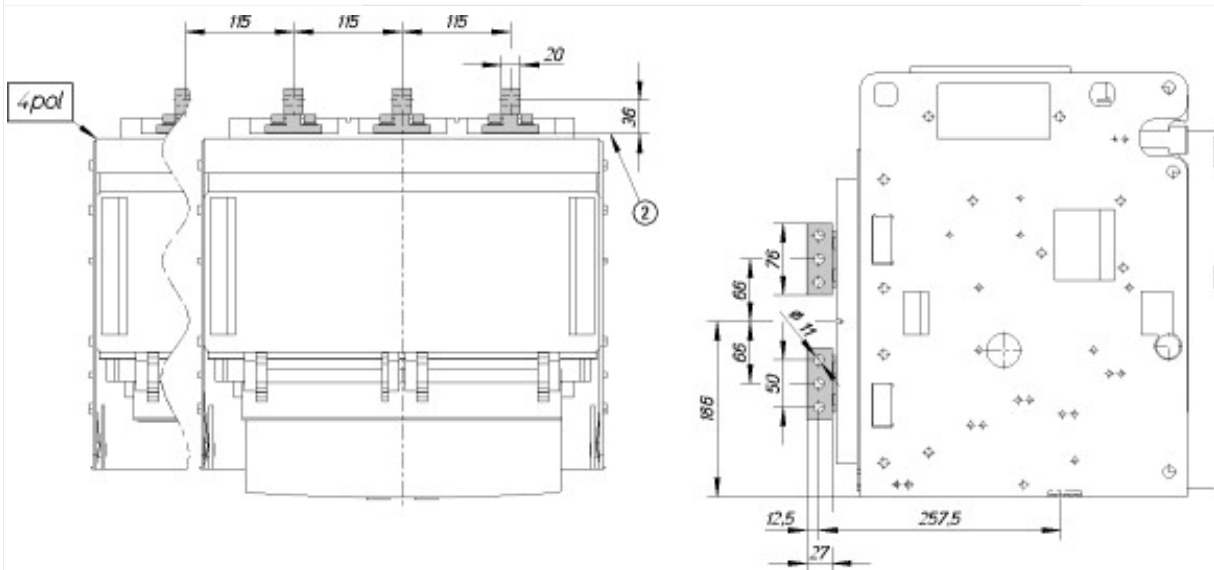
Suitable for number of poles 4

### Dimensions

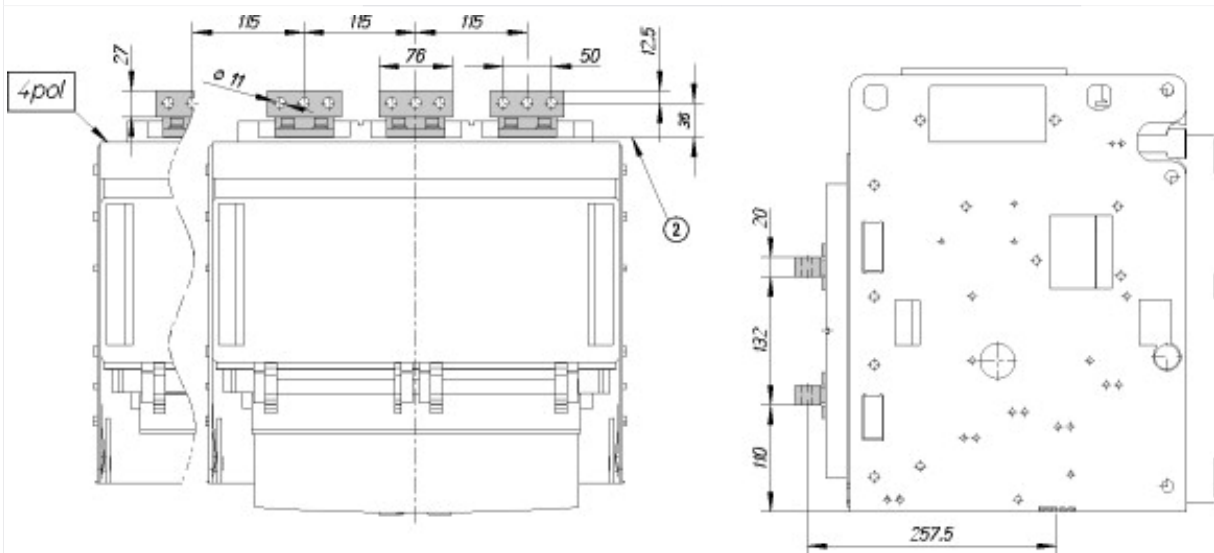




② Contact surface flange terminal



② Contact surface flange terminal



② Contact surface flange terminal