

SVJC clamp holder positive, right-hand

For copying, longitudinal and face turning with VC indexable insert

ATORN[®]

Application

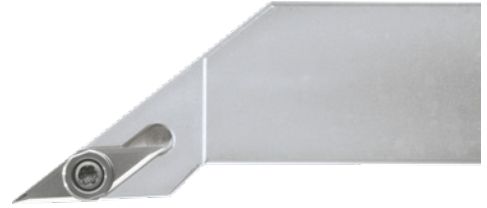
For copying, longitudinal and face turning with VC indexable insert 35°

Version

- Precision-manufactured steel support, burnished, hardened, type V, working angle 93°, tip angle 35°, clearance angle 7°

Advantage

- Very narrow geometry optimised for contour-turning work
- Positive body geometry ensures low cutting forces
- Very good surfaces, for medium and finishing infeed



Art. no.	17833 062
ISO name	SVJC R/L2525 M16
Shaft height	25 mm
Shank width	25 mm
Length	150 mm
Length of head	32.5 mm
Programming size	32 mm
Suitable for indexable inserts	VC.. 1604..
Tool design	Right
DIN	4983

EAN-Code

4050293346718