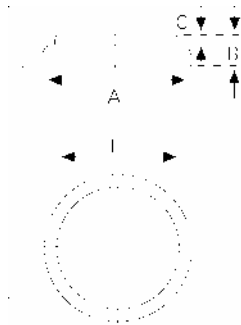


Data Sheet



Type Number 6616
Designation IEC CR 1616
System Li-Manganese dioxide / Organic Electrolyte

UL Recognition:..... MH 13654 (N)
Nominal Voltage 3 V
Typical Capacity C 55 mAh
 Load 39 kOhm, at 20°C down to 2 V

Weight (approx.) 1,2 g
Volume 0,3 ccm
Coding..... Date of Manufacturing Month/Year

Temperature Ranges min max.
 Storage -55°C 70°C
 Discharge -20°C 65°C

Dimensions min max.
 Diameter (A) 15,7 16,0
 Height (B) 1,4 1,6
 Shoulder Diameter[E]..... 12,0
 Shoulder Height [C]..... 0,2

Segment Electronic

Main Applications Watch
 Photo
 Electronic

Typical Capacities (at 20°C)

Discharge Type	Load	End Voltage:	2.0 V
Continuous 24h/d, 7d/w Current [µA]:	39000 Ω	Time: Capacity [mAh]: Energy [mWh]:	670 h 50 142

All Data contained herein is for single cells

For battery applications, performance data may vary from single cell data, depending on specific battery configuration

VARTA Microbattery GmbH, Daimlerstr. 1, D-73479 Ellwangen/Jagst
 Tel.: (+49) 7961/921-0, Telefax: (+49) 7961/921-553

Subject to change without prior notice!
 Date of issue: 2004-12-16