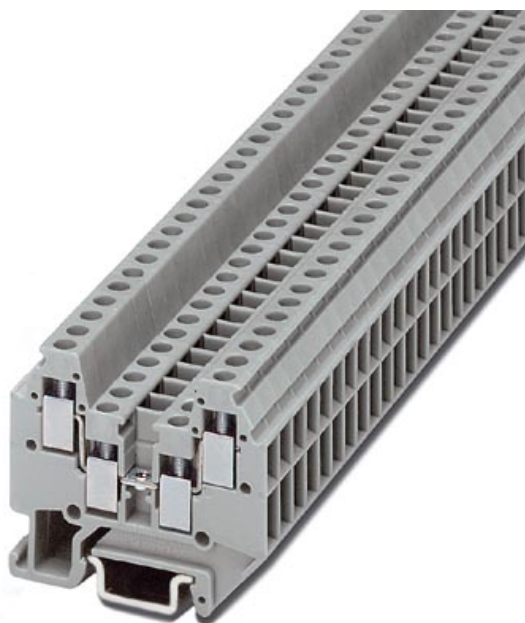


► General data



Modular terminal block with screw connection, cross section: 0.14 - 1.5 mm², AWG: 30 - 14, width: 4.2 mm, color: gray

Order number	3001679
Type	MT 1,5-QUATTRO

Barcode number	4017918104375
Unit pack	50 Pcs.
Customs tariff	8536901000

► Technical data

General

Number of levels	2
Number of connections	4
Color	gray
Insulating material	PA
Inflammability class acc. to UL 94	V0

Dimensions

Width	4.2 mm
Length	33.5 mm

Technical data

Rated surge voltage	4 kV
Contamination class	3
Surge voltage category	III
Insulating material group	I
Connection in acc. with standard	IEC/ DIN VDE
Nominal current I_N	16 A (The maximum load current must not be exceeded by the total current of all connected conductors.)
Nominal voltage U_N	400 V

Connection data

Min. conductor cross section, rigid	0.14 mm ²
Conductor cross section, rigid max.	1.5 mm ²
Conductor cross section flexible min.	0.14 mm ²
Max. conductor cross section, flexible	1.5 mm ²
Min. conductor cross section AWG/kcmil	26
Conductor cross section AWG/kcmil max	16
Min. conductor cross section, flexible, with ferrule with plastic sleeve	0.25 mm ²
Conductor cross section flexible, with ferrule without plastic sleeve max.	0.75 mm ²
Conductor cross section flexible, with ferrule with plastic sleeve min.	0.25 mm ²
Max. conductor cross section, flexible, with ferrule with plastic sleeve	0.75 mm ²
2 conductors with same cross section, solid min.	0.14 mm ²
2 conductors with same cross section, solid max.	0.5 mm ²
2 conductors of the same cross section, flexible, min.	0.14 mm ²
2 conductors with same cross section, flexible max.	0.5 mm ²
2 conductors of the same cross section, flexible, ferrules without plastic sleeve, min.	0.25 mm ²
2 conductors with identical cross section, flexible, ferrules with plastic sleeve, max.	0.34 mm ²
Type of connection	Screw connection
Stripping length	6 mm
Screw thread	M 2
Tightening torque	0.22 Nm

► Certificates

UL

Nominal voltage U_N	300 V
Nominal current I_N	15 A
AWG/kcmil	30-14

CSA

Nominal voltage U_N	300 V
Nominal current I_N	15 A
AWG/kcmil	28-14

▶ Drawings

Approval logo



► Accessories

Item	Designation	Description
Assembly		
3002982	D-MT 1,5-QUATTRO	Cover, width: 1 mm, color: gray
1401637	E/MBK	End bracket, width: 6.2 mm, color: gray
1401682	NS 15 GELOCHT METER	DIN rail 15 mm (NS 15)
1401695	NS 15 UNGELOCHT METER	DIN rail, material: Steel, unperforated, height 5.5 mm, width 15 mm, length: 2 m
1401763	NS 15-AL GELOCHT METER	DIN rail, material: Aluminum, perforated, height 5.5 mm, width 15 mm, length: 2 m
Bridges		
3001569	FBRN 4-4 N	Fixed bridge, 4-pos.
3001572	FBRN 5-4 N	Fixed bridge, 5-pos.
3001585	FBRN 6-4 N	Fixed bridge, 6-pos.
3001598	FBRN 7-4 N	Fixed bridge, 7-pos.
3001608	FBRN 8-4 N	Fixed bridge, 8-pos.
3001624	FBRN 10-4 N	Fixed bridge, for cross connections in the terminal center, with fixed crimped rolls, screw heads without insulation, 10-pos., divisible
3001637	FBRN 20-4 N	Fixed bridge, 20-pos.
Marking		
0803634	ZBFM 4:SO/CMS	Special printing, Zack marker sheet, flat, 100-section, divisible, marking according to customer requirements
Tools		
1205037	SZS 0,4X2,5	Screwdriver, bladed, matches all screw terminal blocks up to 1.5 mm ² connection cross section, blade: 0.4 x 2.5 mm

► Address

Phoenix Contact GmbH & Co. KG
Flachsmarktstr. 8
32825 Blomberg
Germany
Tel + 49 - (0) 52 35 - 3-00
Fax + 49 - (0) 52 35 - 3-4 12 00
www.phoenixcontact.com

© Phoenix Contact
Technical modifications reserved