



1 STANDARD EXECUTIONS

- VMT-SST: AISI 303 stainless steel, sandblasted matte finish.
- VMT-SST-A4: AISI 316L stainless steel, sandblasted matte finish.



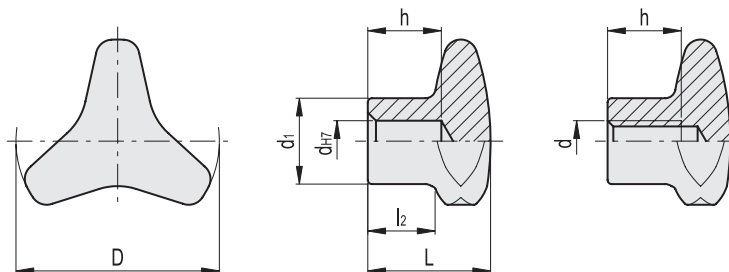
2 SPECIAL EXECUTIONS ON REQUEST

- Hub, threaded pass-through hole.
- Glossy finish.



3 FEATURES AND APPLICATIONS

The three-lobe shape with large recesses is particularly ergonomic, ensuring an effective grip even with work gloves. The design without rear recesses prevents unhealthy residues from depositing, ensuring maximum ease of cleaning. Particularly suitable for applications on machines and equipment whose parts must be frequently cleaned by using water jets or steam.



VMT-SST



Code	Description	D	d	dh7	L	d1	l2	h	⚖
169592	VMT-SST-40-M6	40	M6	-	26	18	15	12	65
169591	VMT-SST-40-8	40	-	8	26	18	15	15	70
169593	VMT-SST-40-M8	40	M8	-	26	18	15	15	70
169602	VMT-SST-50-M8	50	M8	-	30	21	17	15	109
169601	VMT-SST-50-10	50	-	10	30	21	17	18	114
169603	VMT-SST-50-M10	50	M10	-	30	21	17	18	138
169612	VMT-SST-60-M10	60	M10	-	35	25	18	18	190
169611	VMT-SST-60-12	60	-	12	35	25	18	22	195
169613	VMT-SST-60-M12	60	M12	-	35	25	18	22	232

VMT-SST-A4



Code	Description	D	d	dh7	L	d1	l2	h	⚖
169597	VMT-SST-A4-40-M6	40	M6	-	26	18	15	12	65
169596	VMT-SST-A4-40-8	40	-	8	26	18	15	15	70
169598	VMT-SST-A4-40-M8	40	M8	-	26	18	15	15	70
169607	VMT-SST-A4-50-M8	50	M8	-	30	21	17	15	109
169606	VMT-SST-A4-50-10	50	-	10	30	21	17	18	114
169608	VMT-SST-A4-50-M10	50	M10	-	30	21	17	18	138
169617	VMT-SST-A4-60-M10	60	M10	-	35	25	18	18	190
169616	VMT-SST-A4-60-12	60	-	12	35	25	18	22	195
169618	VMT-SST-A4-60-M12	60	M12	-	35	25	18	22	232

Clamping elements