



MASTER LEDtube Mains T5

MAS LEDtube 1200mm HE 16.5W 840 T5 EU

The new Philips Master LEDtube Mains T5 brings simplicity to your lighting project. You don't need to pay attention to the driver technology anymore. Thanks to a unique design, Philips MASTER LEDtube Mains T5 installs in luminaires operating on mains power connection. So simple to operate! . Perfectly safe, reliable & easy to install Philips MASTER LEDtube Mains T5 is the ideal alternative to standard fluorescent tubes to maximize value over lifetime with high energy saving and lower maintenance costs.

Product data

General Information	
Cap-Base	G5 [G5]
Nominal lifetime	50,000 hour(s)
Switching Cycle	200,000
Lighting Technology	LED
Flux measurement reference	Sphere

Light Technical	
Color Code	840 [CCT of 4000K]
Beam Angle (Nom)	200 degree(s)
Luminous Flux	2,500 lumen
Color Designation	Cool White (CW)
Correlated Color Temperature (Nom)	4000 K
Luminous Efficacy (rated) (Nom)	151 lm/W
Color Consistency	<6
Color rendering index (CRI)	80
LLMF At End Of Nominal Lifetime (Nom)	70 %

Operating and Electrical	
Line Frequency	50 to 60 Hz
Input Frequency	50 to 60 Hz
Power Consumption	16.5 W
Lamp Current (Nom)	85 mA
Starting Time (Nom)	0.5 s
Warm-up time to 60% light	0.5 s
Power Factor (Fraction)	0.92
Voltage (Nom)	220-240 V

Temperature	
Ambient temperature range	-20 °C to 45 °C
T-Case Maximum (Nom)	70 °C

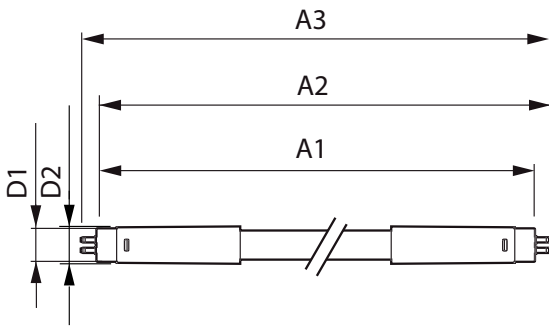
Controls and Dimming	
Dimmable	No

MASTER LEDtube Mains T5

Mechanical and Housing	
Bulb Finish	Frosted
Bulb Material	Glass
Product Length	1,200 mm
Bulb Shape	Tube, double-ended
Approval and Application	
Energy Saving Product	Yes
Approval Marks	RoHS compliance CE marking KEMA Keur certificate
Energy Consumption kWh/1000 h	17 kWh
EPREL Registration Number	467,303
CE mark	Yes

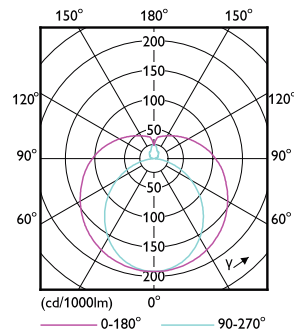
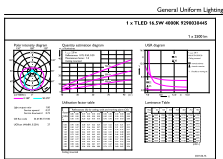
EU RoHS compliant	Yes
Product Data	
Full product code	871951433433500
Order product name	MAS LEDtube 1200mm HE 16.5W 840 T5 EU
Order code	929003044502
Numerator - Quantity Per Pack	1
Numerator - Packs per outer box	10
Material number (12NC)	929003044502
Full product name	MAS LEDtube 1200mm HE 16.5W 840 T5 EU
EAN/UPC - Case	8719514334342

Dimensional drawing



Product	D1	D2	A1	A2	A3
MAS LEDtube 1200mm HE 16.5W 840 T5 EU	15.8 mm	19 mm	1,149 mm	1,156.1 mm	1,163.2 mm

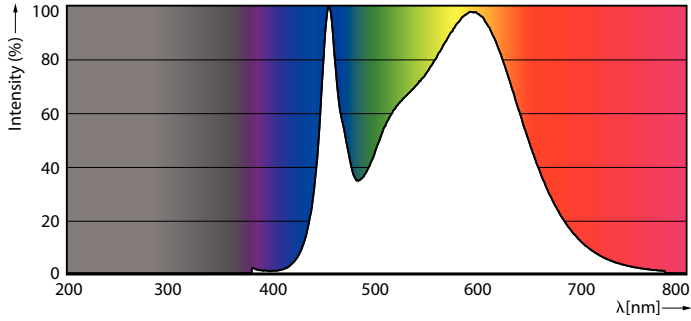
Photometric data



Light Distribution Diagram - MAS LEDtube 1200mm HE 16.5W 840 T5 EU

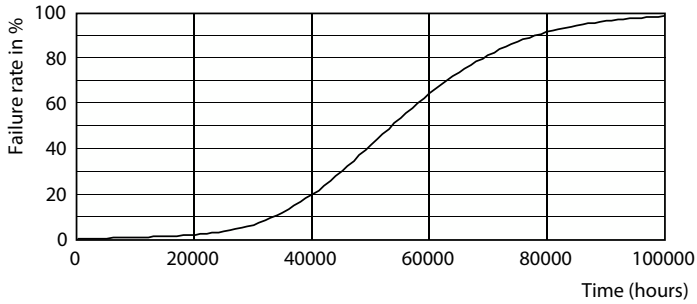
MASTER LEDtube Mains T5

Photometric data

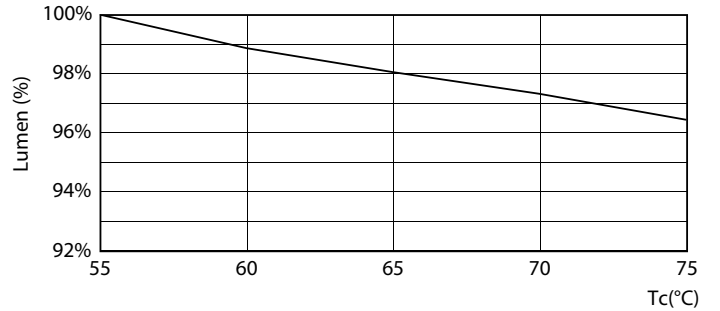


Spectral Power Distribution Colour - MAS LEDtube 1200mm HE 16.5W 840 T5 EU

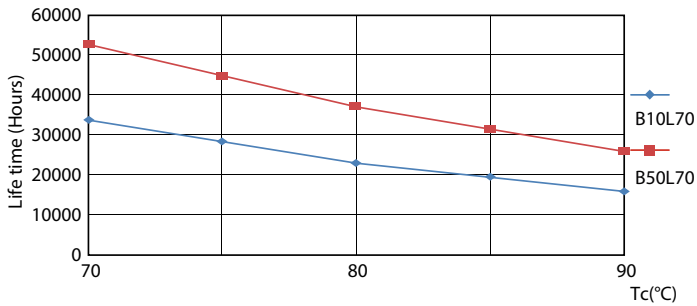
Lifetime



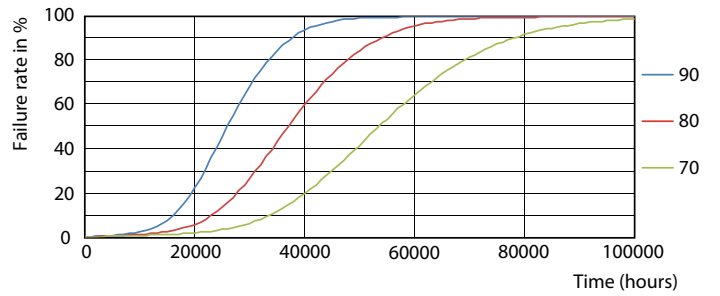
Life Expectancy Diagram - MAS LEDtube 1200mm HE 16.5W 840 T5 EU



Lumen Maintenance Diagram - MAS LEDtube 1200mm HE 16.5W 840 T5 EU



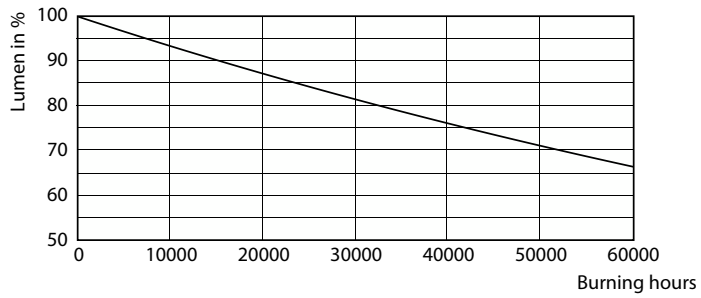
Life Expectancy Diagram - MAS LEDtube 1200mm HE 16.5W 840 T5 EU



Life Expectancy Diagram - MAS LEDtube 1200mm HE 16.5W 840 T5 EU

MASTER LEDtube Mains T5

Lifetime



Lumen Maintenance Diagram - MAS LEDtube 1200mm HE 16.5W 840 T5 EU

